

Terms of Reference

Invitation to Participate

Yellowhead East and West End Entrance Corridors



Edmonton Entrance Features National Design Competition

Urban Design Group
Planning and Development Department
City of Edmonton
February 2007

Contents

1	Overview _____	1
2	Background _____	2
3	The Site _____	3
4	Objectives _____	12
5	Competition Rules and Requirements _____	13
6	Stage I – How to Enter _____	14
7	Stage II _____	15
8	Schedule and Deadlines _____	16
9	The Jury _____	17
10	Competition Honoraria _____	18
11	Budget _____	19
12	Questions and Answers _____	20
13	Transportation Criteria and Relevant Material _____	21
14	Additional Reference Material _____	22
15	Contact _____	23
16	Registration Form _____	24

1

Overview

This competition seeks to solicit the most creative and exceptional designs for two entrance features to our Capital City. The competition will be conducted in two stages. The first stage (Stage I) requires the submission of design concepts. Members of the Edmonton Design Committee will appoint a jury to evaluate the submissions. Two submissions will be selected to proceed to a second stage (Stage II) during which the finalists will further develop their design concepts. The jury will then reconvene to review the refined designs and select the winner(s). This is to be announced in the summer of 2007. The City of Edmonton Urban Design Group of the Planning and Development Department will administer the competition.

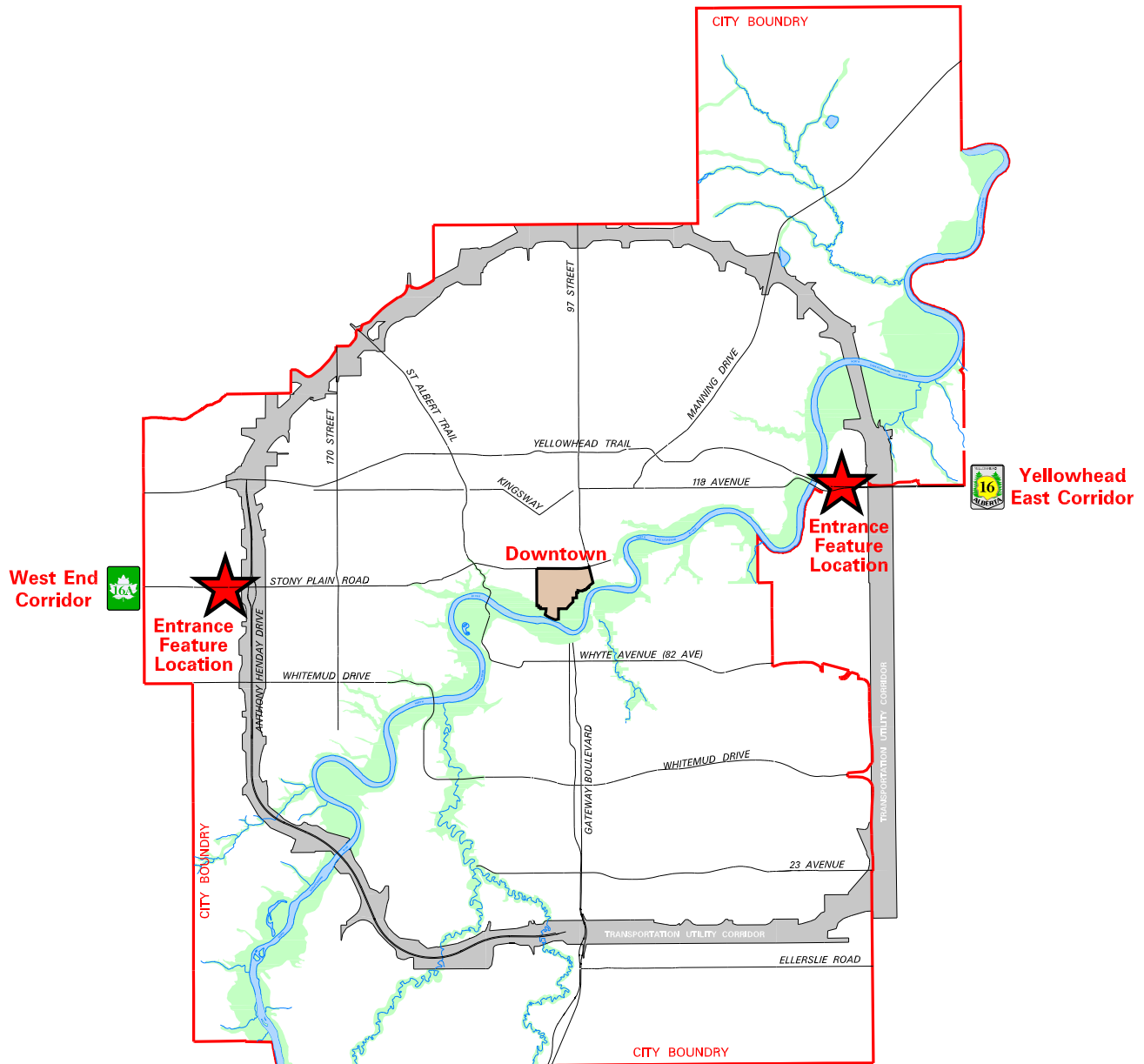
2 *Background*

- ▶ Edmonton is Alberta's capital and Canada's fifth largest municipality. It has a population of 712,391 (2005 Civic Census) within its boundaries, and a population estimated at 1,014,000 in its Census Metropolitan Area (sixth largest in the country).
- ▶ The current “Welcome to Edmonton” signs that greet visitors to the city are beginning to look tired and dated.
- ▶ Over the years, City Council passed several resolutions indicating their commitment to improve the appearance of the entrance corridors to the City of Edmonton.
- ▶ Consultants were retained to develop design guidelines for both the Yellowhead East and West End Entrance Corridors. The purpose of these guidelines is to develop attractive and functional corridors that create a sense of arrival to our Capital City from the east and the west.
- ▶ The Yellowhead East Corridor involves an 8.5 km stretch of the Yellowhead Trail (Highway 16) from 50 Street to Edmonton's eastern boundary at 33 Street. The West End Corridor starts at the Edmonton city limits at 231 Street and ends at Anthony Henday Drive along Stony Plain Road.
- ▶ Vision building workshops and public open houses were held, for both corridors, to seek input from local residents, businesses, and stakeholders.
- ▶ The construction budget for the two entrance features is subject to council approval in December 2007.

3

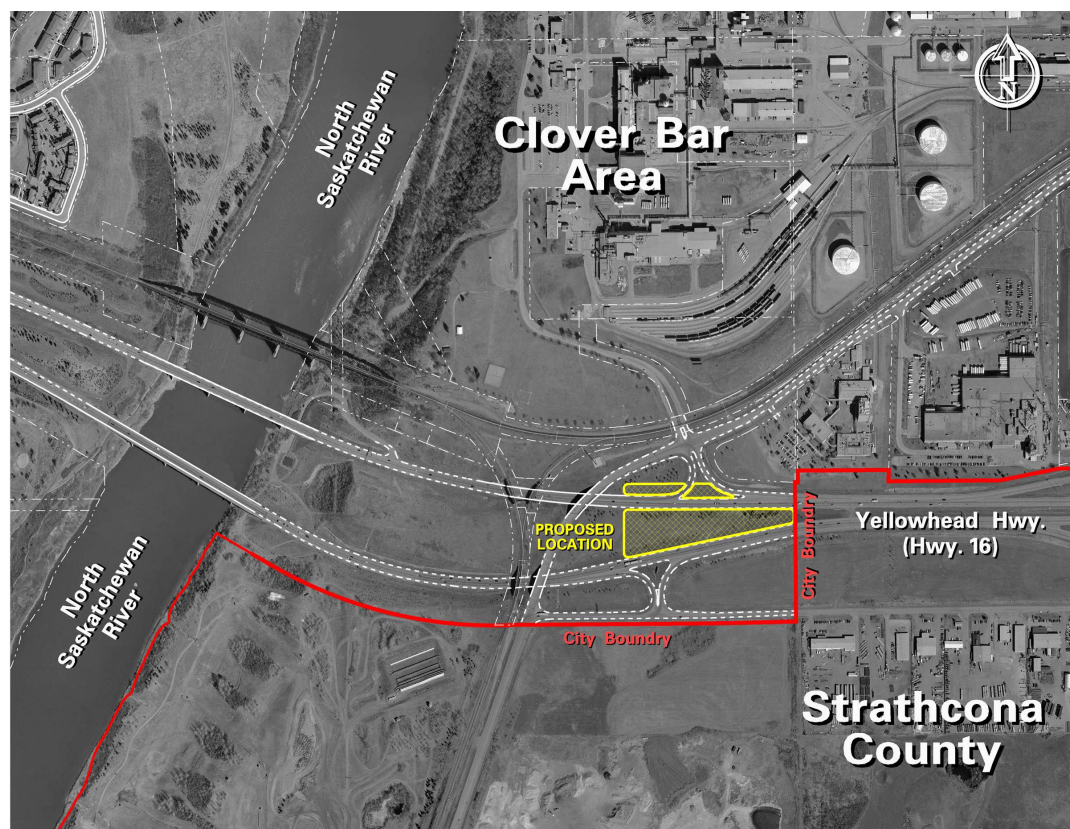
The Site

► The sites of the proposed two entrance features are shown on the following drawings:



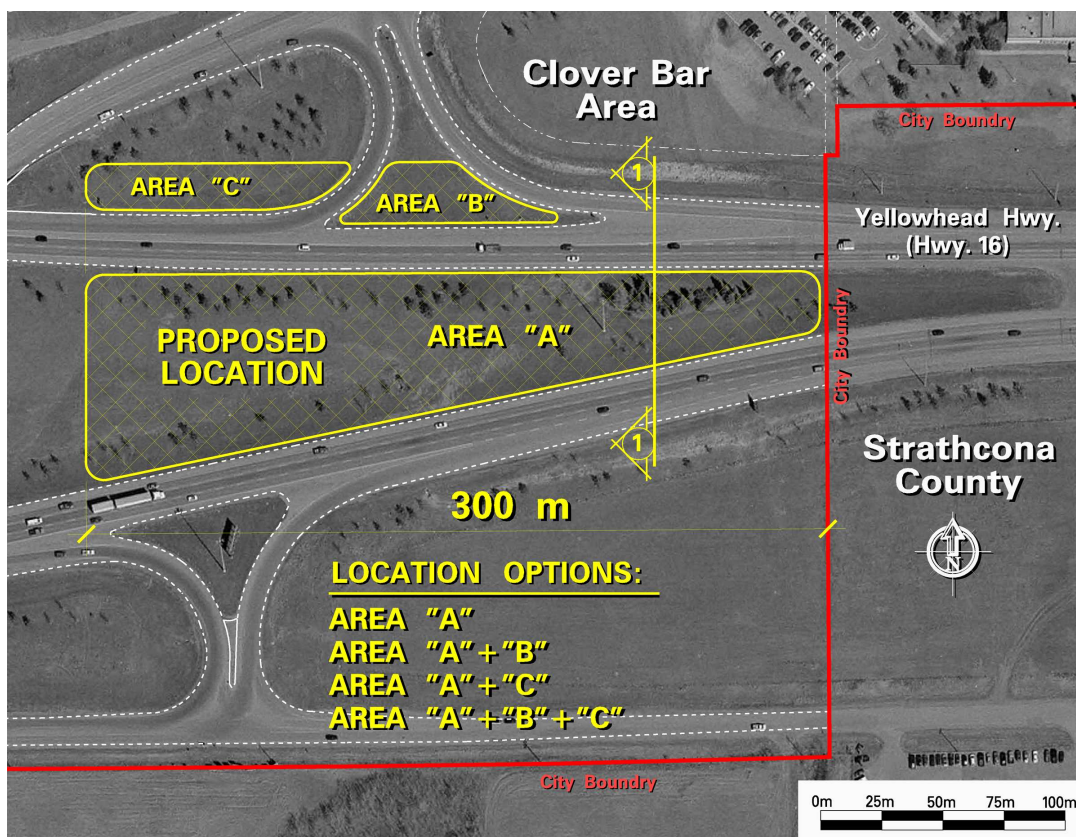
Proposed Entrance Feature - Context

Yellowhead East Corridor

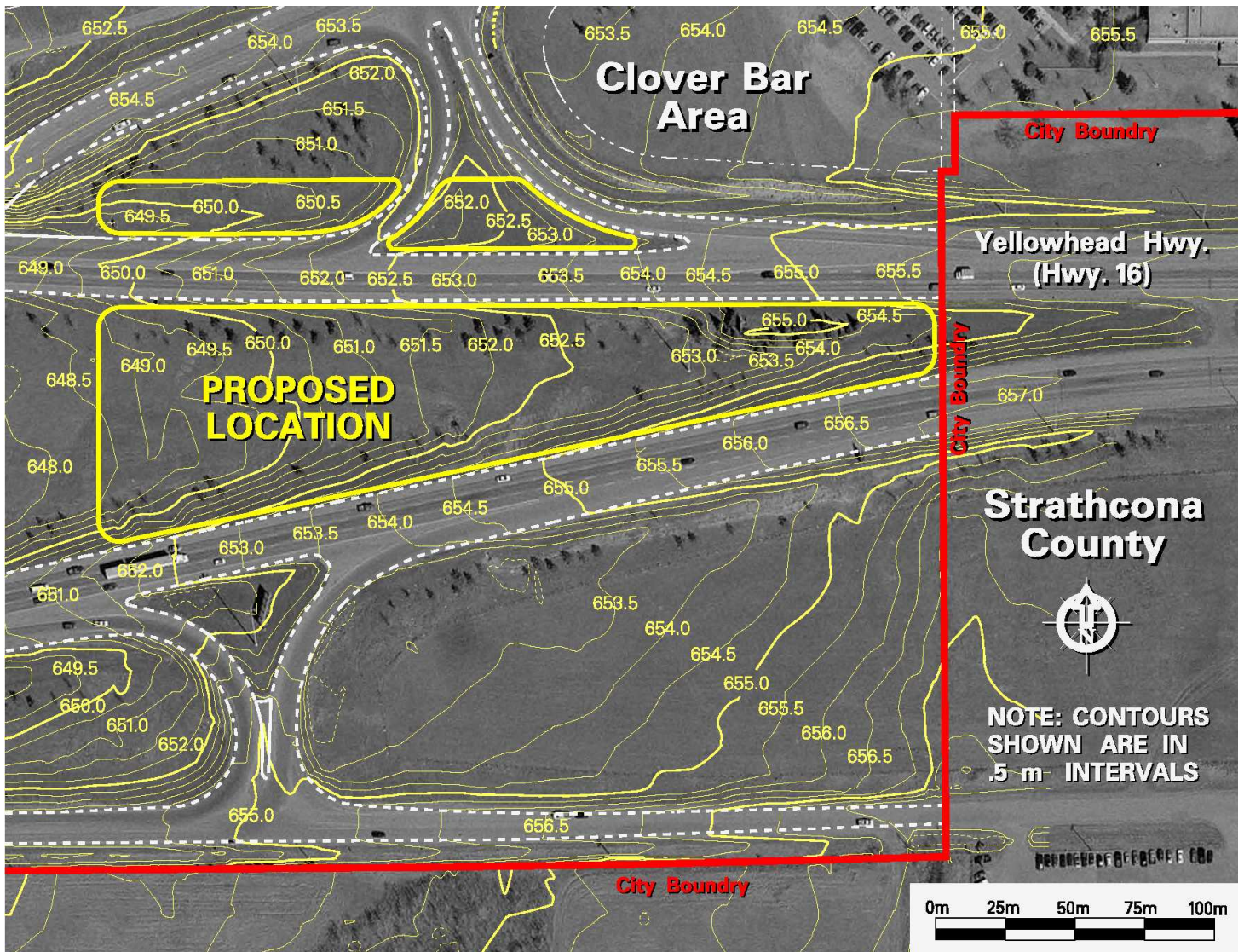


Proposed Entrance Feature - Site Plan

Yellowhead East Corridor

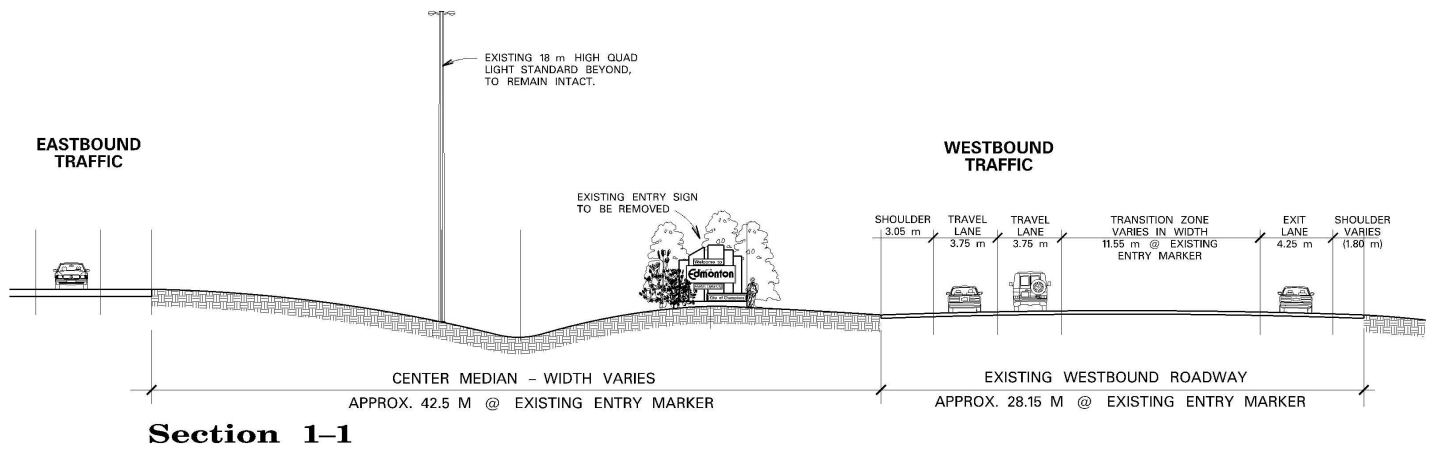


Proposed Entrance Feature - Contour Map Yellowhead East Corridor



Proposed Entrance Feature - Existing Condition

Yellowhead East Corridor



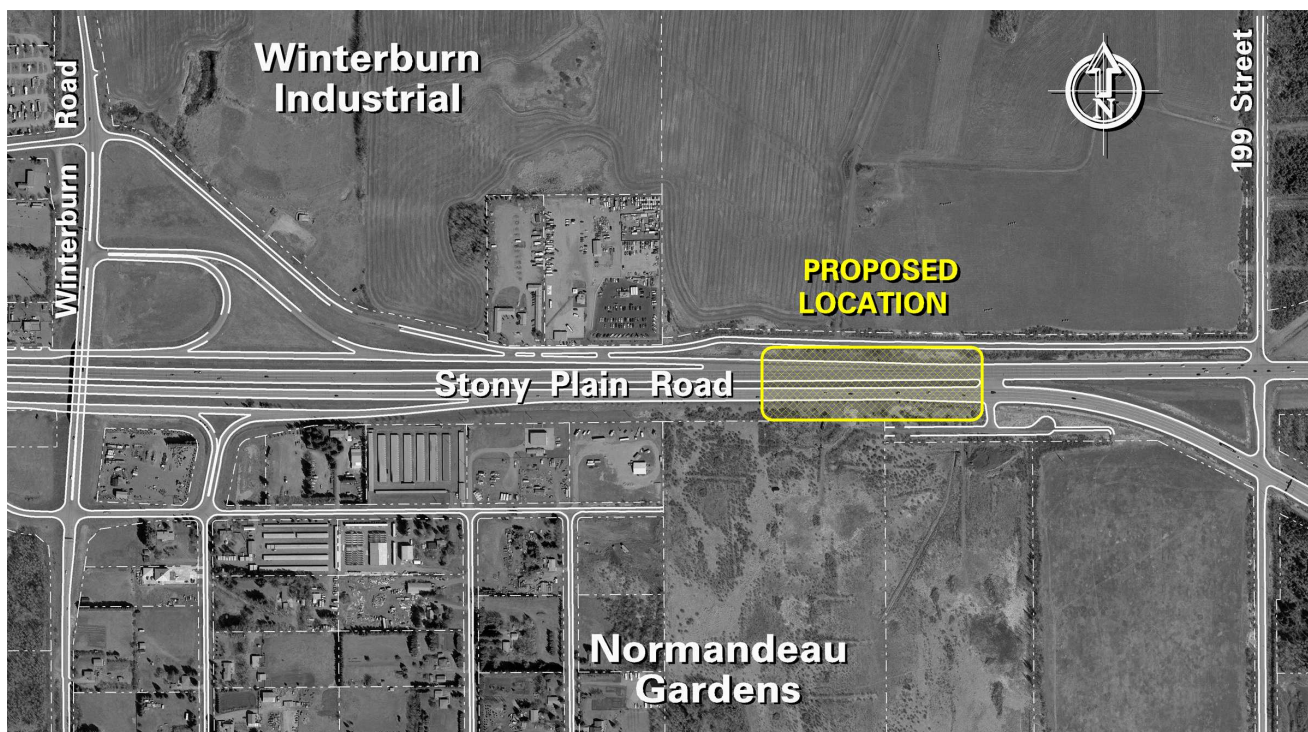
Yellowhead East Entry - view looking west from city boundary



Existing Welcome Sign

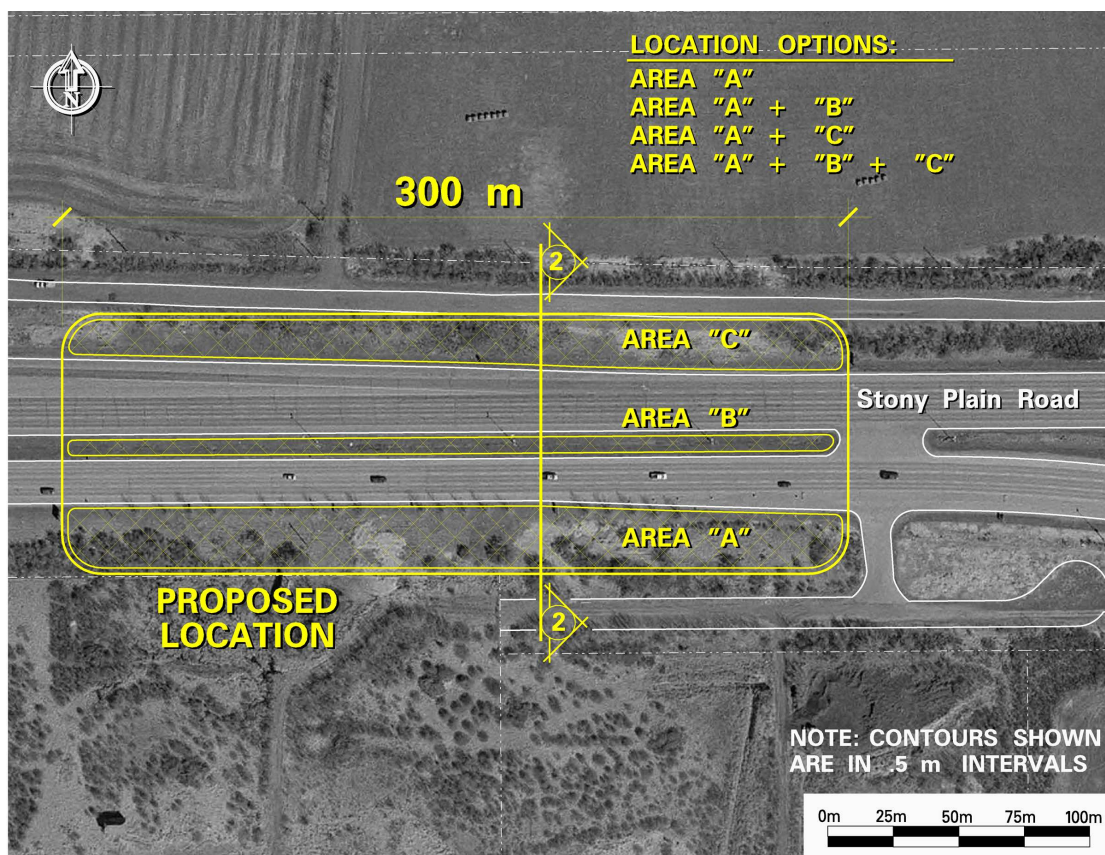
Proposed Entrance Feature - Context

West End Corridor



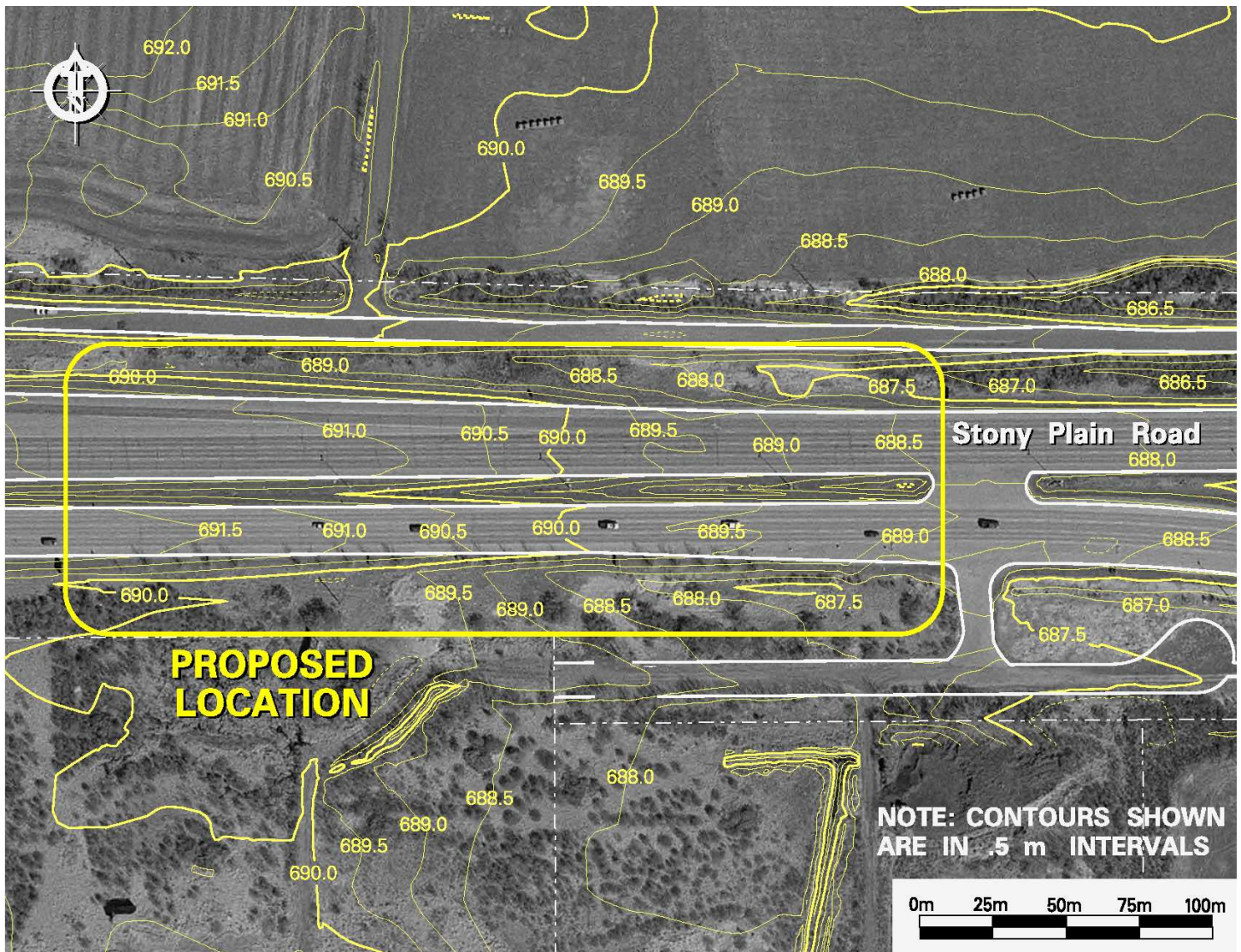
Proposed Entrance Feature - Site Plan

West End Corridor



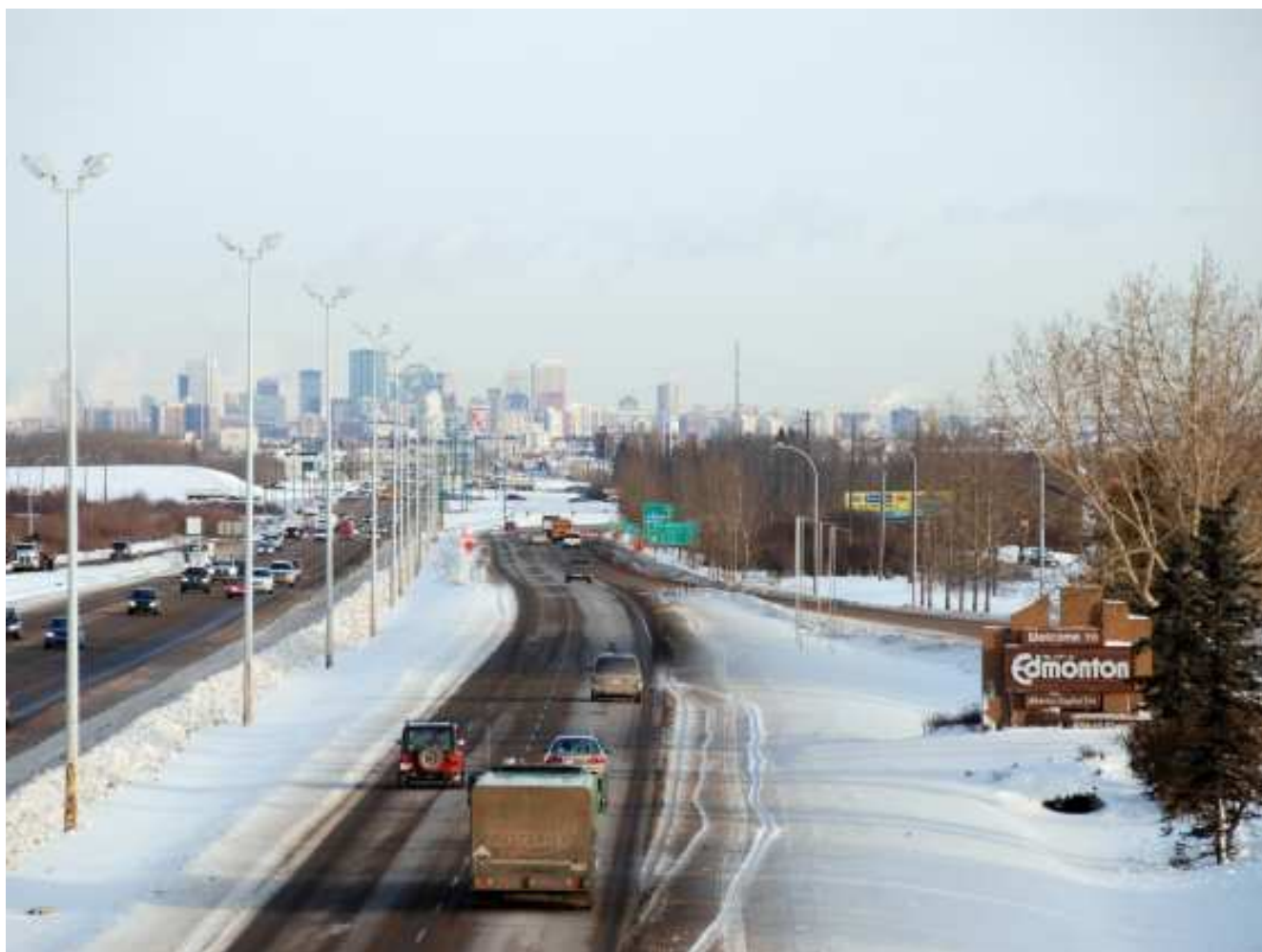
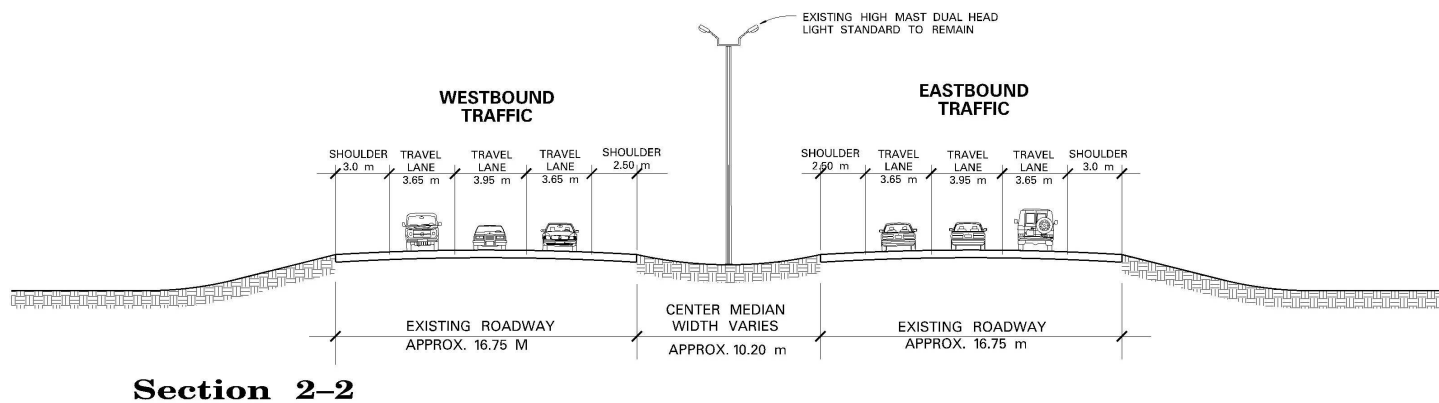
Proposed Entrance Feature - Contour Map

West End Corridor



Proposed Entrance Feature - Existing Condition

West End Corridor



West End Entry - view looking east from Winterburn Road



Existing Welcome Sign

4 *Objectives*

- ▶ To create new entrance features - welcome gestures that greet visitors to our city and create a sense of arrival.
- ▶ The entrance features would offer a first impression of our city.
- ▶ The entrance features would reflect the city of Edmonton's image, as shared by its citizens, for being:
 - Alberta's capital city
 - Gateway to the north
 - Largest industrial city in Alberta
- ▶ The design of the entrance features may also acknowledge the geographic location or the local character of each entrance corridor.
- ▶ The entrance features would be of significant scale to have visual prominence and legibility at high speed.
- ▶ The entrance features would be lit for night visibility.
- ▶ The entrance features would include site landscaping.

5

Competition Rules and Requirements

- ▶ This is an open design competition for all individuals or teams and firms engaged in design, art, architecture, landscape architecture, planning and engineering in Canada. A multi-disciplinary approach is encouraged.
- ▶ Members of the Edmonton Design Committee, the appointed jury, their associated firms, and employees of the City of Edmonton are not eligible to compete.
- ▶ Communication between competitors and members of the jury will be conducted through the Urban Design Group of the City of Edmonton. Any communication between competitors and jury members regarding the competition may result in disqualification.
- ▶ The entrance features will be built on public road right-of-way, and will be required to conform to city transportation criteria (*see attached transportation criteria in Section 13*).
- ▶ The City of Edmonton Urban Design Group will examine submissions prior to the jury review to advise whether they comply with competition rules and requirements.
- ▶ Finalists in Stage I will be given additional instructions related to the rules, regulations, and guidelines.
- ▶ The selected submission(s) among the finalists from Stage II will be forwarded to City Council for their approval. Subsequent revisions might have to be made to meet City standards and regulations.
- ▶ All submissions in Stage I and Stage II will become the sole property of the City of Edmonton. The City of Edmonton will require copyright for the winning submission(s). The winner(s) will be required to confirm assignment of copyright to the City of Edmonton.
- ▶ The jury is under no obligation to select any finalists. All decisions of the jury are final.
- ▶ The first place finalist(s) will be required to enter into an agreement with the City of Edmonton relating to the implementation of the winning design and their respective rights and responsibilities. A payment of \$60,000 for each entrance feature will be paid for the completion of all construction drawings including construction supervision at critical stages.

6 *Stage 1 How to Enter*

To enter the competition, all participants must submit:

- ▶ Registration Form.
- ▶ Submission Form with a \$100.00 Submission Fee payable to the City of Edmonton (money order or certified cheque).
- ▶ Design concepts on a maximum of two 23¹/₂"x 33" (A1 size) presentation boards including site plans, plans, elevations, cross-sections, 3D illustrations, and a description of the proposal including size, material, and cost. Elevations must be at the scale of 1:100.
- ▶ CD with electronic images of the entry submission. Electronic files must be produced at a resolution of 300 dpi and saved in a .tif (tagged information format), .eps (encapsulated postscript), and/or .jpeg format. Label the CD with the applicant's name and address.

The presentation materials must be drymounted on hard boards, preferably foam core.

The presentation techniques employed for the submissions are at the discretion of the competitors.

The registration number must be included in the upper right hand corner on the front of the presentation board(s) using the number provided in the submission form.

Other than a competitor's registration number, the presentation boards shall bear no identification, name, symbol, or mark that might serve to reveal the identity of the competitor submission.

The competition content including the Registration Form is posted on the City of Edmonton website:

www.edmonton.ca/EntranceDesignComp

Registration Forms for the competition must be received no later than **4:30 p.m. on March 15, 2007** at the following address.

Edmonton Entrance Features National Design Competition
The City of Edmonton
Planning and Development Department
6th Floor, 10250-101 Street NW
Edmonton, AB T5J 3P4

Submission Forms (Stage I) with the required submission fee in a properly sealed envelope and the presentation boards must be received no later than **4:30 p.m. on May 10, 2007** at the above address.

7

Stage 2

From among the Stage I submissions, the jury will select two submissions. The selected finalists will be invited to refine their proposals in Stage II. The jury will review the finalist's submissions and select the winner(s). Stage II submissions must include:

- ▶ Preliminary plans (further refined design concepts) including site plan, plans, elevations, cross-sections, and 3D illustrations. Elevations must be at the scale of 1:100.
- ▶ A model at the scale of 1:50 to clearly illustrate the proposal.
- ▶ CD with electronic images of the entry submission. Electronic files must be produced at a resolution of 300 dpi and saved in a .tif (tagged information format), .eps (encapsulated postscript), and/or .jpeg format. Label the CD with the applicant's name and address.
- ▶ Engineering assessments by a qualified professional engineer.
- ▶ Cost estimates of construction in 2008 dollars.

Preliminary plans will be presented on 23½"x 33" (A1 size) hard boards, preferably foam core as described previously.

Complete (Stage II) Submissions must be received no later than **4:30 p.m. on July 26, 2007** at:

Edmonton Entrance Features National Design Competition.

**The City of Edmonton
Planning and Development Department
6th Floor, 10250-101 Street NW
Edmonton, AB, T5J 3P4**

8

Schedule and Deadlines

Competition Begins	February 17, 2007
Last Day for Registration	March 15, 2007
Receipt of Stage I Submissions	May 10, 2007
Jury Selects Finalists	May 17, 2007
Stage I Submissions on Display at City Hall	May 18 - 20, 2007
Receipt of Stage II Submissions	July 26, 2007
Jury Selects the Winner(s)	August 2, 2007
Stage II Submissions on Display at City Hall	August 3 - 5, 2007
Approval of the Design by City Council	August 28, 2007
Construction Drawings	September 2007 - November 2008
Approval of Construction Budget by City Council	November / December 2007
Tender by the City	January 2008 - February 2008
Construction	April 2008 - August 2008

9 *The Jury*

Members of the Edmonton Design Committee will appoint a jury to review and evaluate the submissions at Stage I and Stage II. The winner(s) will then proceed for approval by City Council.

10

Competition Honoraria

The finalists from the Stage I submission will be invited to participate in the Stage II submission. Upon completing the Stage II requirements, the eligible finalists will be paid \$50,000.00 honoraria.

11

Budget

The total budget for the construction of the two entrance features in 2008 is estimated at \$1.2 million including GST (\$600,000.00 each including GST).

The construction budget for the two entrance features is subject to City Council approval in December 2007.

12

Questions and Answers

Participants will be given the opportunity to submit any questions regarding the content of the competition website. Questions may be submitted via email to:

lianne.horne@edmonton.ca

OR

Fax: (780) 401-7051

Questions must be submitted no later than
March 5, 2007.

Answers to questions will be posted on the website :
www.edmonton.ca/EntranceDesignComp
and will remain on the website until the close of Stage I
submissions.

All information updates related to the design
competition will be posted on the above website.

13

*Transportation
Criteria and
Relevant
Material*► **Transportation Criteria**

- All features which are non-break away structures must meet Transportation Association of Canada (TAC) Guidelines for clear zones (set backs) as identified in the TAC Geometric Design Guidelines. These distances are dependant on the design speed of the roadway along with other geometric conditions at the site.
- Power requirements for lighting must be identified and need to be compatible with existing City of Edmonton power sources.
- Changeable copy video display signage is not permitted for structures/features that span the road or are placed over the driving lanes.
- Any structures/features that span the road must meet minimum vertical clearance standards for truck routes. This will be specified at a minimum of 5.3m at these locations.
- Placement of structures must not create sightline restrictions for pedestrians or drivers to and from access points along the corridor.
- Placement of structures must not obstruct traffic signals or any other traffic control devices.
- The contractor and/or designer will be responsible for any costs for any traffic control removal, relocates or repairs required to facilitate the installation of the proposed structure or features.
- Any structure which spans the roadway shall only cross over the main line and should not span any adjacent on or off-ramp.
- Any overhead structure must contain or make provision for a walkout for maintenance access. This provision must be able to allow maintenance to take place without impacts to the travel lanes below.
- Final locations must be approved by the Transportation Department prior to tender of project work.

► **Yellowhead Corridor East Design Guidelines**► **West End Corridor Urban Design Guidelines**► **Transportation Association of Canada (TAC) Guidelines**

14

Additional Reference Material

City of Edmonton:

<http://www.edmonton.ca/portal/server.pt>

Government of Alberta:

<http://www.gov.ab.ca/home/index.cfm>

Edmonton Economic Development Corporation:

<http://www.edmonton.com/eedc/portal.asp?page=2>

Edmonton Chamber of Commerce:

<http://www.edmontonchamber.com/>

Alberta Tourism:

<http://www.albertatourism.com/>

15

Contact

Al K. Cameron, C.E.T.
Senior Architectural Technologist

al.cameron@edmonton.ca

Phone: (780) 496-6113

Fax: (780) 401-7053

16

*Edmonton Entrance Features National Design Competition
Yellowhead East and West End Entrance Corridors*

Registration Form

First and Last Name

Address

City

Province

Postal Code

Phone

Fax

Email Address

By completing and submitting this Registration Form, the registrant agrees to be bound by the rules and requirements of the Edmonton Entrance Features National Design Competition.

Upon completion and submittal of the Registration Form, registrants will be assigned a registration number. Registrants will receive by Mail a Registration Acknowledgment with this number attached. A Submission Form will also be included as part of the package.

Registration Forms for the competition must be received no later than **4:30 p.m.** on **March 15, 2007** at the following address:

Edmonton Entrance Features National Design Competition
The City of Edmonton
Planning and Development Department
6th Floor 10250-101 Street NW
Edmonton AB T5J 3P4