

Terwillegar Park Footbridge construction achieves milestone

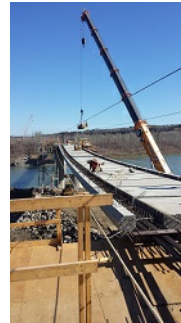
April 15, 2016

The City of Edmonton has begun installation of 86 deck panels, which will form the walking surface of the Terwillegar Park Footbridge.

"A stressed ribbon bridge is essentially a suspension bridge, except the cables are embedded inside the deck panels," explains Rob Marchak, Director Strategic Projects, City of Edmonton. "It's a unique design that will create a lower impact in the river valley – both in terms of construction impacts and in terms of the visual impact of the final design."

Edmonton will be one of only two Canadian cities that have constructed this unique type of bridge. At 262 metres, it will also be the second longest stressed ribbon footbridge in the world.

The panels are held up by 162 individual steel cables that are anchored to a concrete abutment on each river bank and supported in the river by two piers. The installation of each panel is done by a crane lifting each piece onto the steel cables and using a high line to slide it into position. Once all the deck panels are installed, an additional 162 cables will be installed to tighten or 'stress' the bridge deck.



Terwillegar Park Footbridge Overview

- 86 pre-stressed, precast deck panels will be installed over approximately three weeks. The deck panels make up the walking surface of the bridge
- Each panel is approximately 2.64 metres long and 5.3 metres wide
- The unique design means the bridge deck will be only 46.5 cm thick
- The bridge is 262 metres long, which is the slightly over the length of two football fields
- Pedestrians and cyclists using the bridge will feel a slight dip between the two piers and the abutments.

Construction of the footbridge is on time and on budget and is expected to be complete in fall 2016.

In 2013, the City of Edmonton received \$72.9 million in funding for five initiatives as part of the River Valley Alliance (RVA) Capital Project. Of this, the RVA contributed \$48.6 million, and the City of Edmonton contributed \$1.7 million. The remaining funding was granted from the provincial government. The Terwillegar Park Footbridge is part of the City's RVA initiatives and has a budget of \$24.5 million.

The RVA is a collaboration of the seven municipalities along the capital region's North Saskatchewan River Valley that share a common goal – to preserve, protect and enhance the river valley park system for the year round accessibility and enjoyment of citizens and visitors.

In January 2013, the RVA launched a major \$90 million Capital Project that includes 13 priority initiatives in 18 sites. The Government of Canada is contributing up to \$30 million through the Building Canada Fund – Major Infrastructure Component towards the RVA Capital Project. The Government of Alberta is also contributing \$30 million through the Capital Region River Valley Park grant.

For more information and construction photos:

edmonton.ca/rivervalleyprojects

Media contact:

[Cheryl Mitchell](#)
Communications Advisor
780-944-0511

Share:     

3rd Floor, City Hall
1 Sir Winston Churchill Square NW
Edmonton, AB
T5J 2R7
www.edmonton.ca

[Subscribe](#) | [Unsubscribe](#) | [Printer Friendly Version](#)

This email was created and delivered through [Mailout](#)