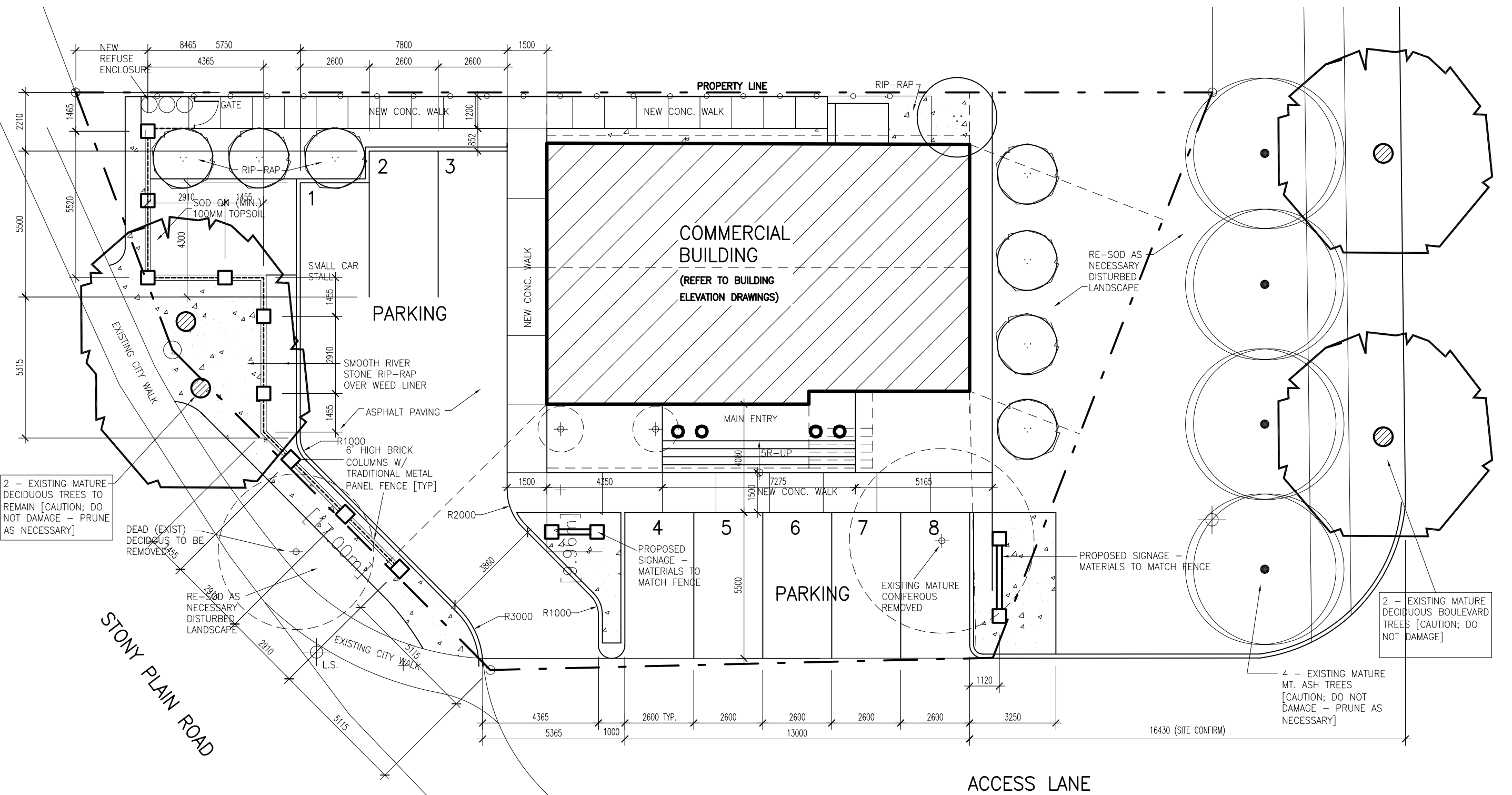


APPENDIX I



2 - EXISTING MATURE DECIDUOUS TREES TO REMAIN [CAUTION; DO NOT DAMAGE - PRUNE AS NECESSARY]

DEAD (EXIST) DECIDUOUS TO BE REMOVED

RE-SOD AS NECESSARY DISTURBED LANDSCAPE

EXISTING MATURE CONIFEROUS REMOVED

PROPOSED SIGNAGE - MATERIALS TO MATCH FENCE

2 - EXISTING MATURE DECIDUOUS BOULEVARD TREES [CAUTION; DO NOT DAMAGE]

4 - EXISTING MATURE MT. ASH TREES [CAUTION; DO NOT DAMAGE - PRUNE AS NECESSARY]

1 LAYOUT PLAN
L-1 SCALE = 1:200



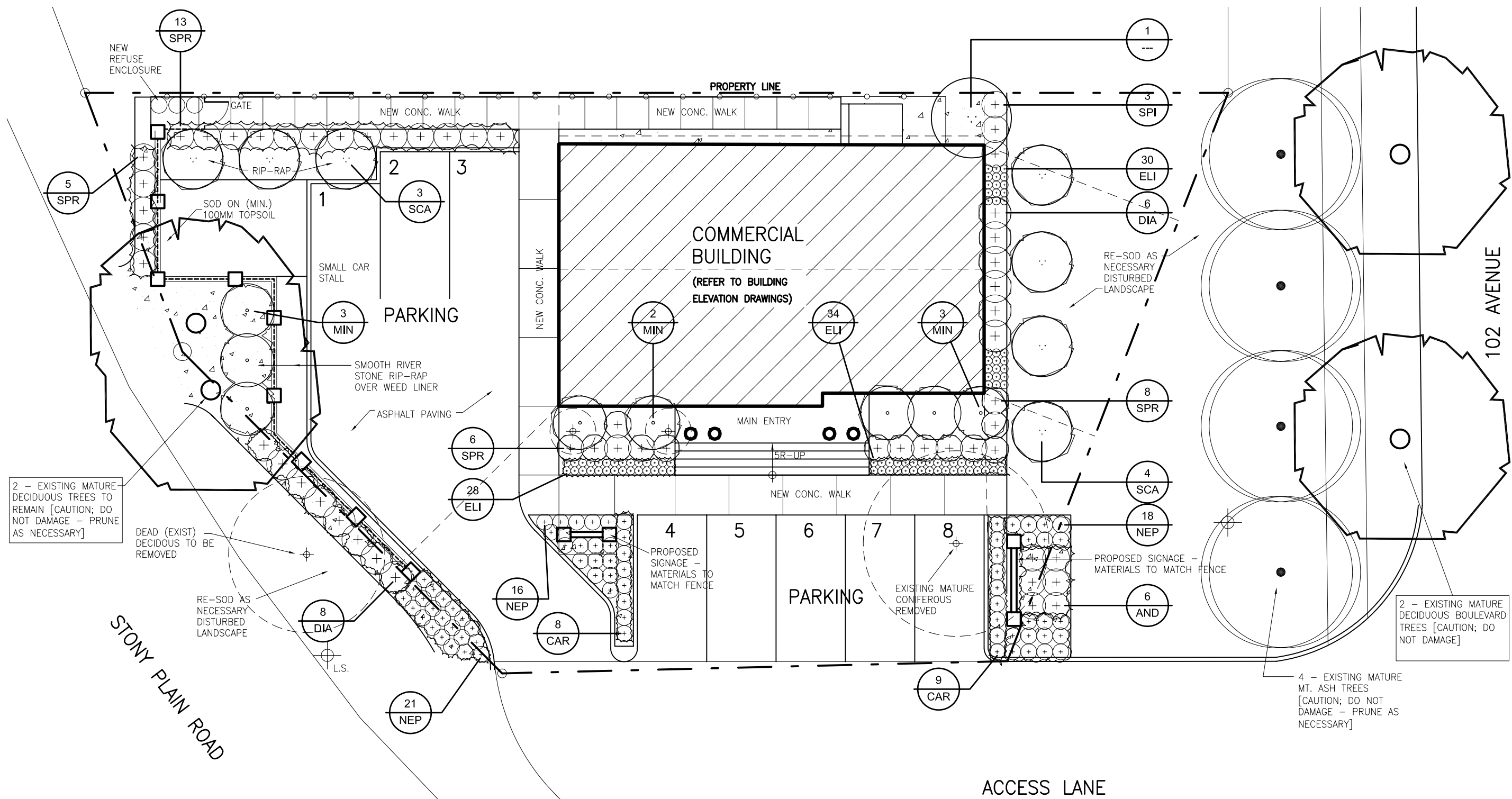
LDA07-0510- DC2 Rezoning Glenora - RE: Bankers & Traders Building Renovation City of Edmonton
Planning Application #066178023-002 (DC2-File # 83-145,732-DC2 Bylaw)

DWG. [L-1]

thirdstone inc. [A]

Project: BANKERS & TRADERS - REDEVELOPMENT
Drawing: LAYOUT PLAN
Scale: 1:200
Date: 2009.02.02

505, 10339-124th street
edmonton, ab, ca.
T5N 3W1
T : 780.423.2980
F : 780.447.2980
info@thirdstone.ca
www.thirdstone.ca



1 LANDSCAPE PLAN
 L-2 SCALE = 1:200

LDA07-0510- DC2 Rezoning Glenora - RE: Bankers & Traders Building Renovation City of Edmonton
 Planning Application #066178023-002 (DC2-File # 83-145,732-DC2 Bylaw)

PLANT LIST

KEY	QTY.	BOTANICAL NAME	COMMON NAME	SIZE	SPACE	CONDITION
SCA	7	POPULUS x. TREMULOIDES	SWEDISH COLUMNAR ASPEN	75mm CALIPER	AS SHOWN	B+B
CAR	18	CARAGANA 'FRUTEX' GLOBOSA	GLOBE CARAGANA	NO.2 CONT.	AS SHOWN	CONT.
MCK	8	PHILADELPHUS VIRGINIALIS	MINNESOTA SNOWFLAKE - MOCKORANGE	NO.5 CONT.	AS SHOWN	CONT.
DIA	14	PHYSOCARPUS OPULIFOLIUS 'DIABLO'	DIABLO NINEBARK	NO.2 CONT.	AS SHOWN	CONT.
SPR	35	SPIRAEA JAPONICA	GOLDMOUND SPIREA	NO.2 CONT.	AS SHOWN	CONT.
SYR	1	SYRINGA RETICULATA	JAPANESE TREE LILAC	NO.5 CONT.	AS SHOWN	CONT.
ELI	92	FESTUCA GLAUCA 'ELIJAH BLUE'	ELIJAH BLUE FESCUE	NO.2 CONT.	AS SHOWN	CONT.
NEP	55	NEPATA 'WALKER'S LOW'	WALKER'S LOW CATMINT	NO.2 CONT.	AS SHOWN	CONT.
AND	6	JUNIPERUS HORIZONTALIS	HORIZONTAL JUNIPER - ANDORRA	NO.2 CONT.	AS SHOWN	CONT.

NOTE: REFER TO SHEET L1.02 FOR TYPICAL PLANTING DETAILS AND SPECIFICATIONS

DWG. [L-2]

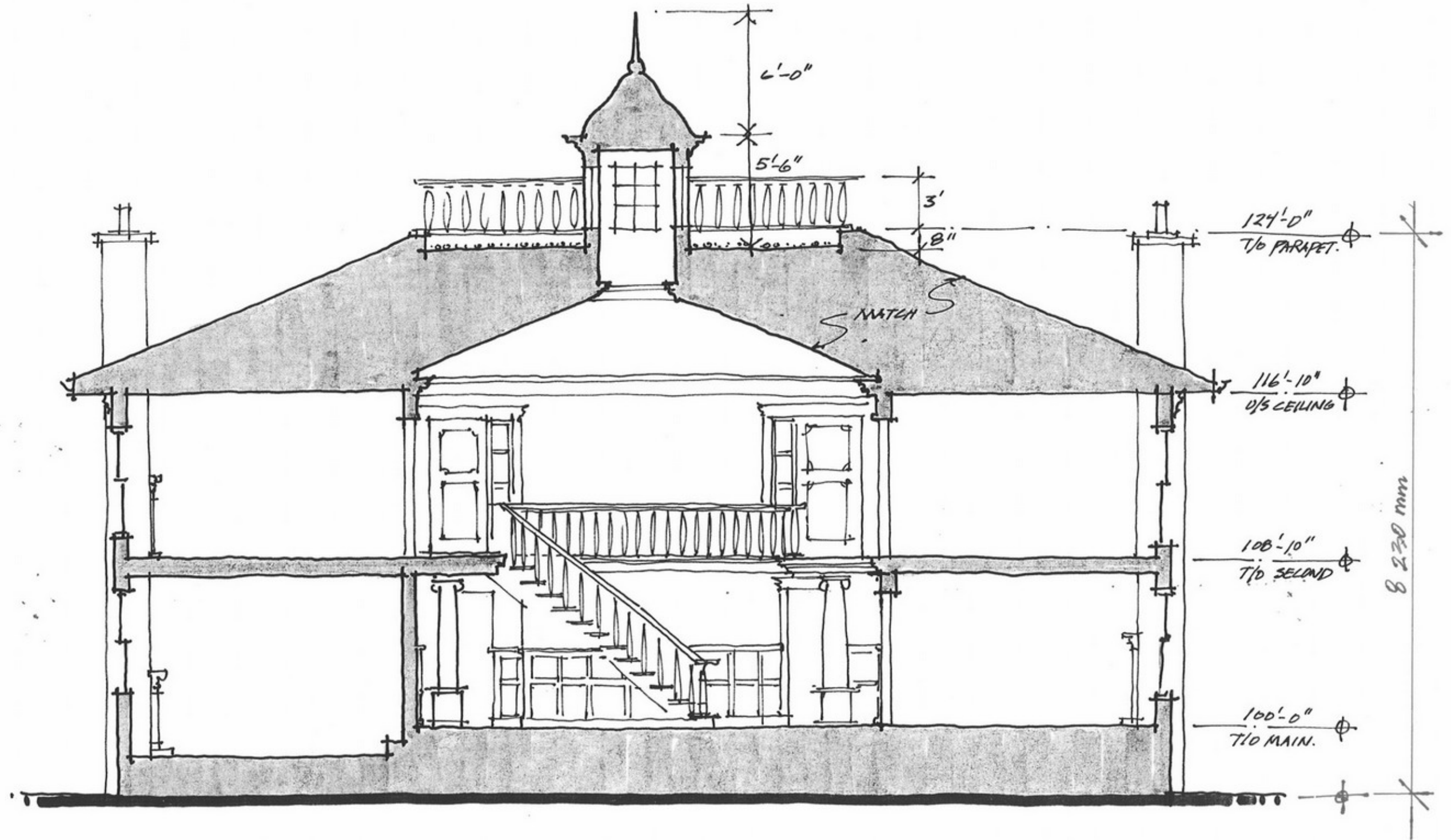
thirdstone inc. [A]

505, 10339-124th street
 edmonton, ab, ca.
 T5N 3W1
 T : 780.423.2980
 F : 780.447.2980
 info@thirdstone.ca
 www.thirdstone.ca

BANKERS & TRADERS - REDEVELOPMENT
PLANTING PLAN, PLANT LIST AND NOTES

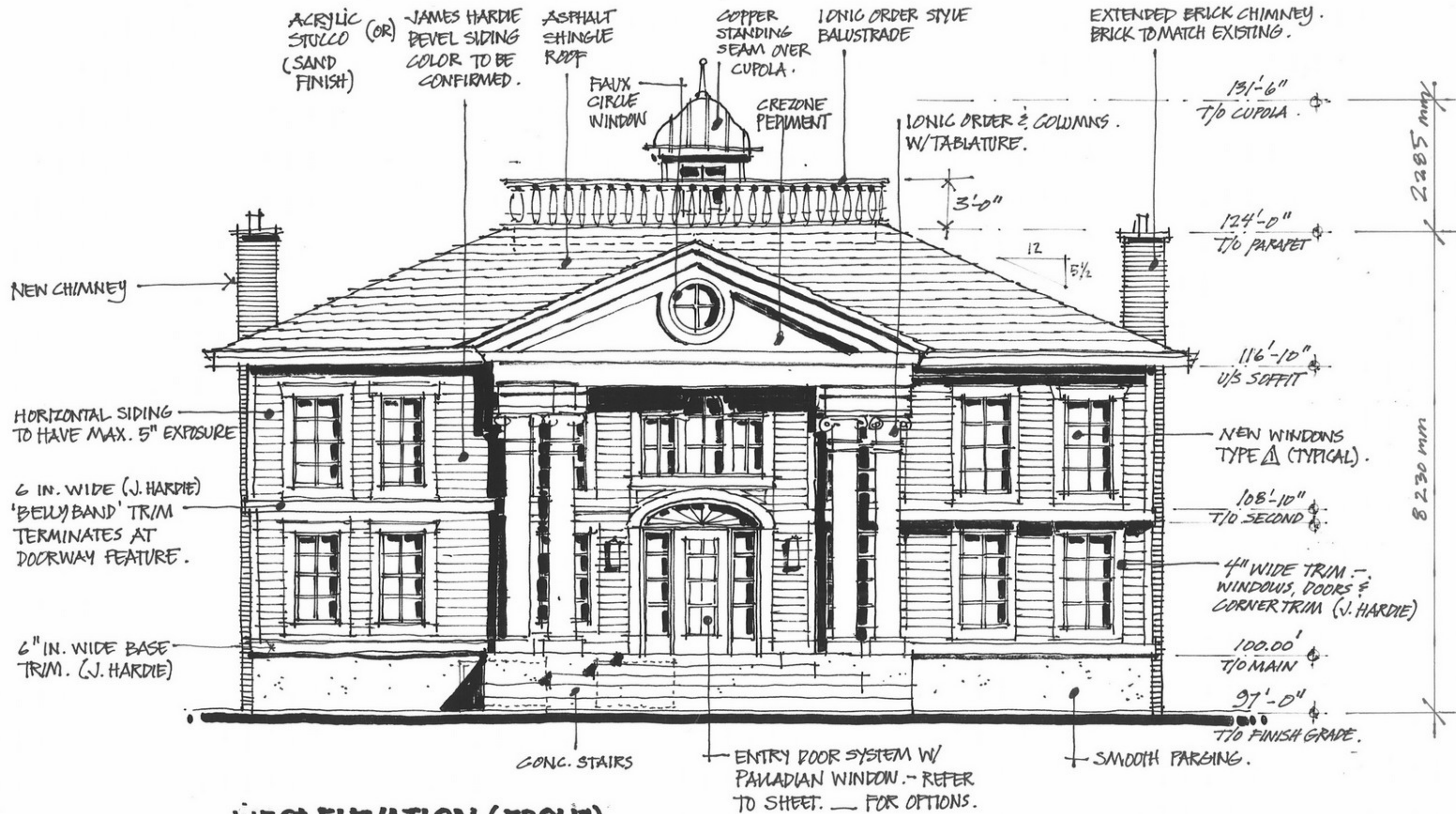
Scale: 1:200

Date: 2009.02.02



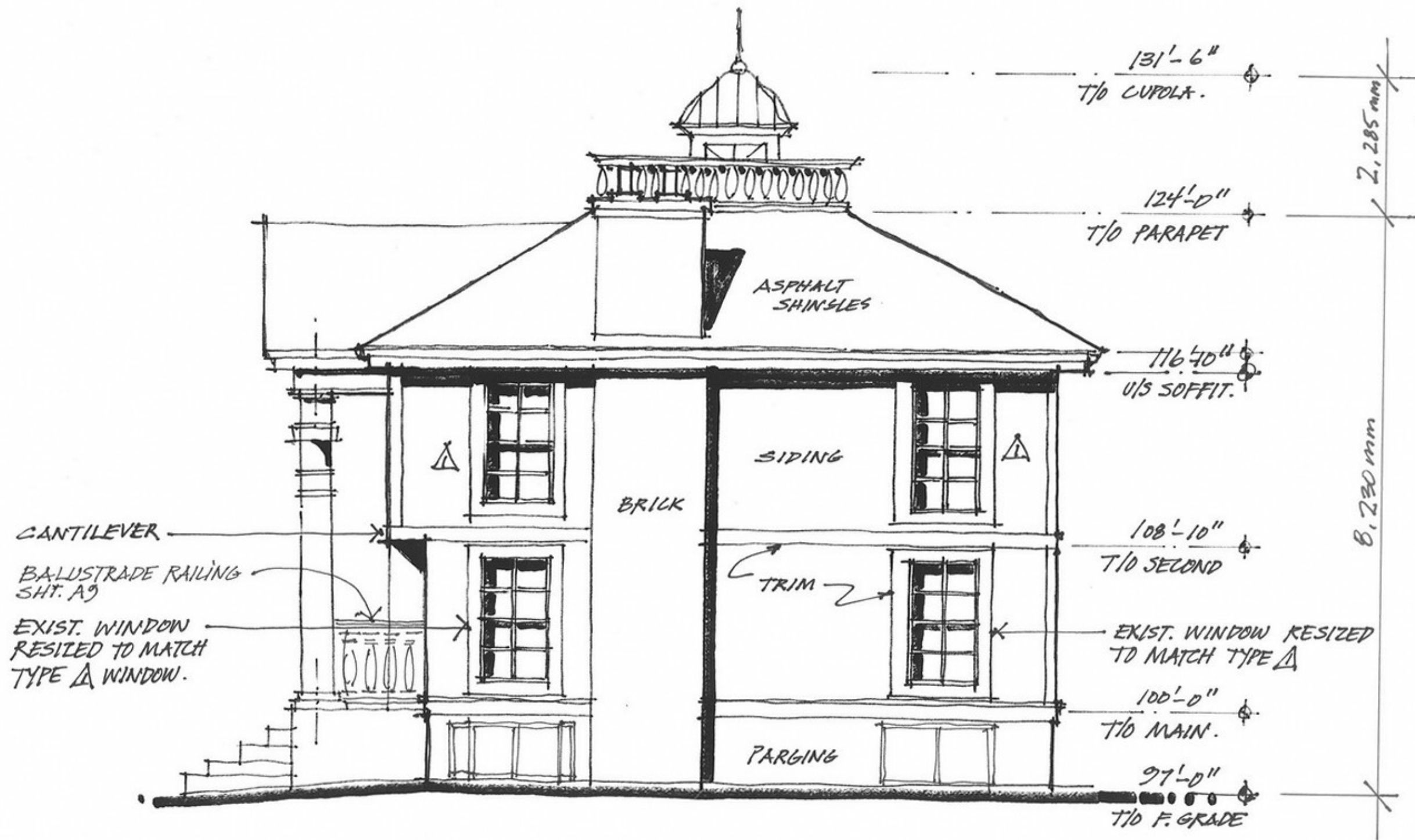
BUILDING SECTION A-A

$3/16" = 1'-0"$



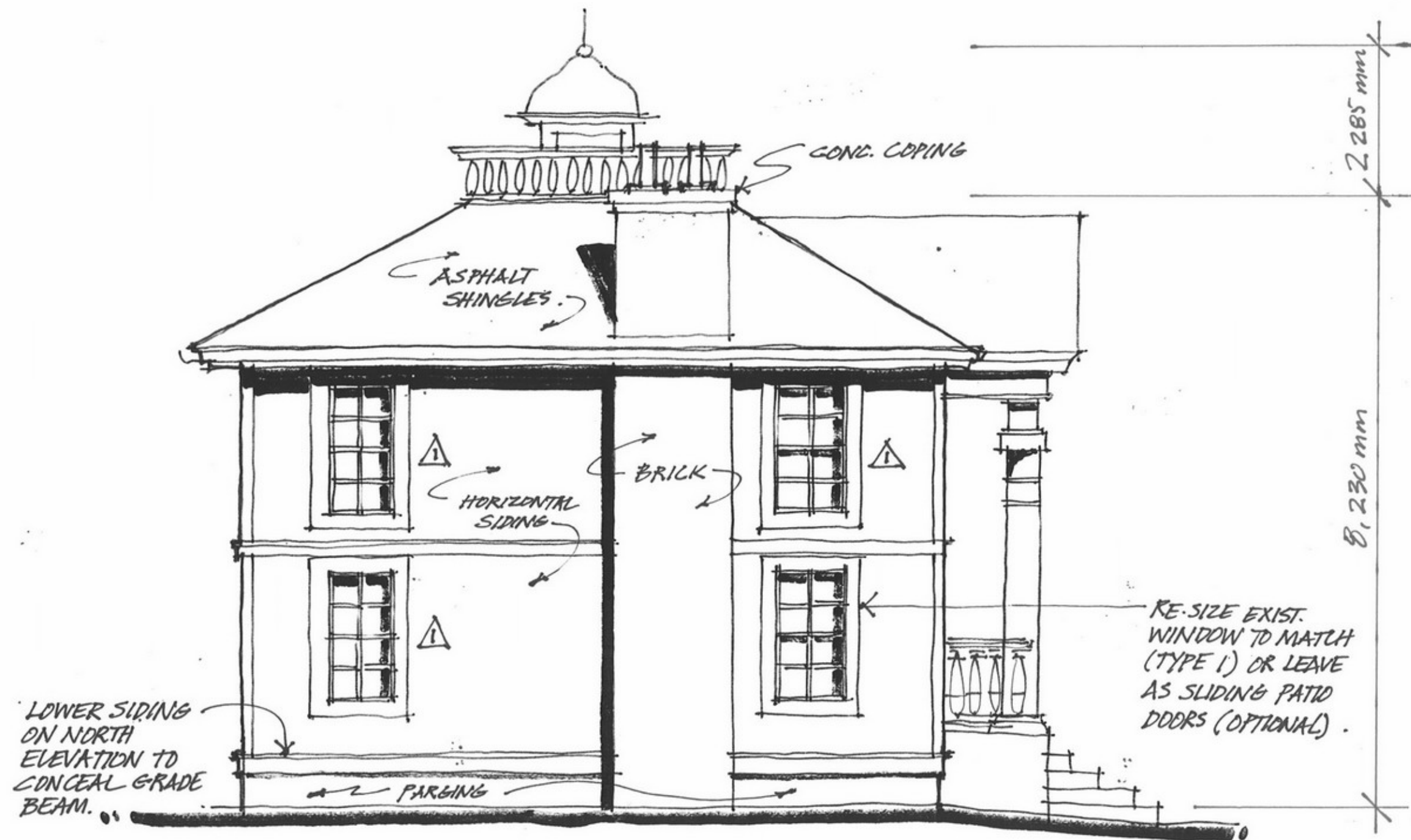
WEST ELEVATION (FRONT)

3/16" = 1'-0"



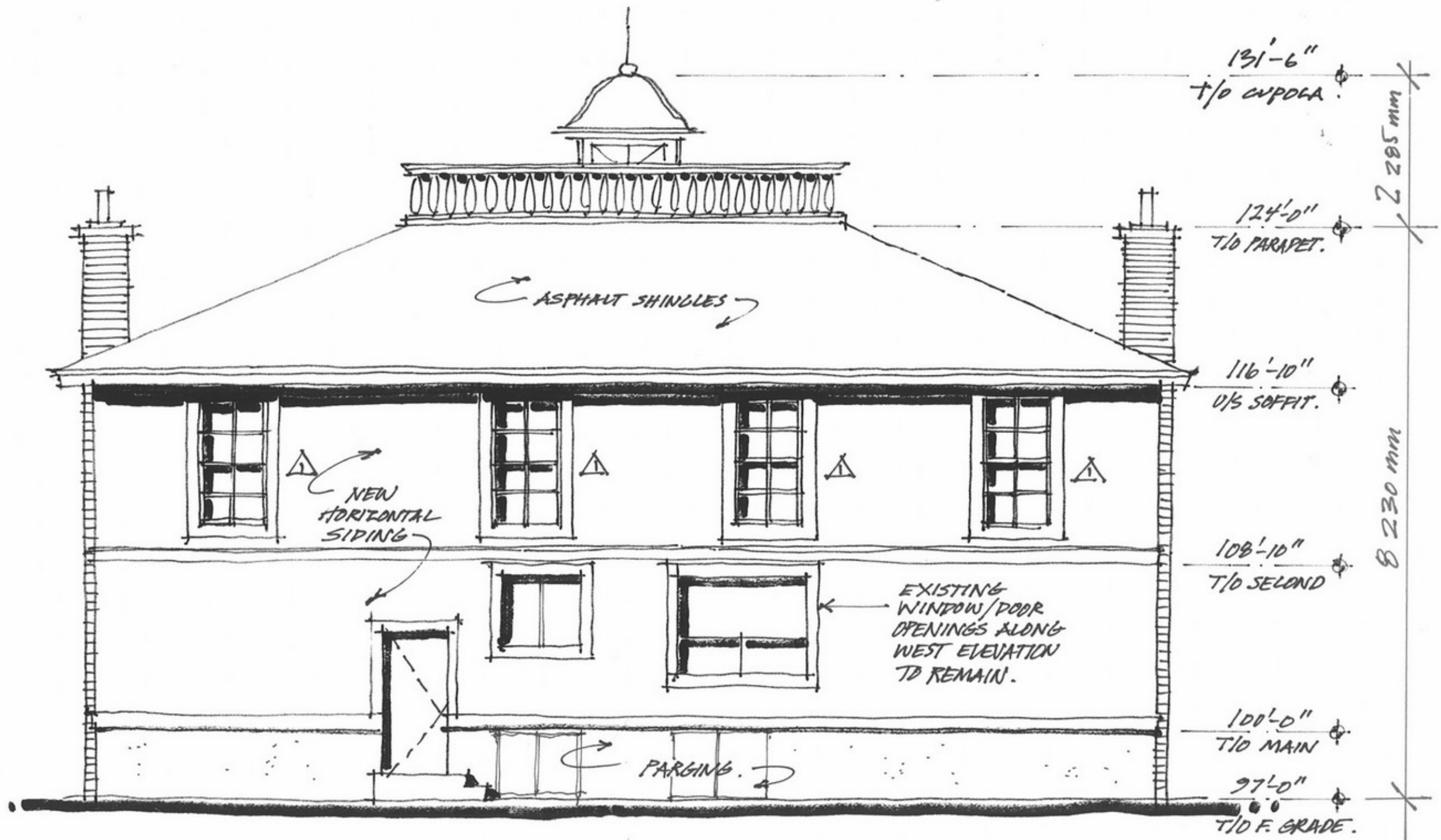
SOUTH ELEVATION (RIGHT)

3/16" = 1'-0"



NORTH ELEVATION (LEFT)

3/16" = 1'0"



EAST ELEVATION (BACK)

3/16" = 1'-0"