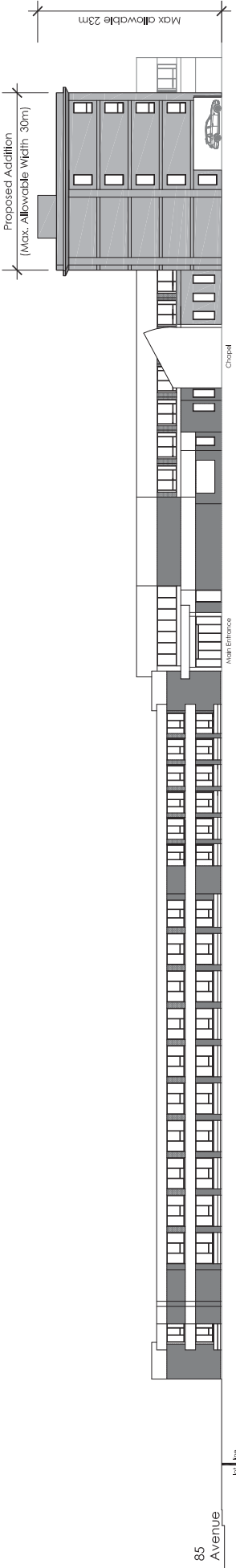


APPENDIX I - SITE PLAN WITH PARKING

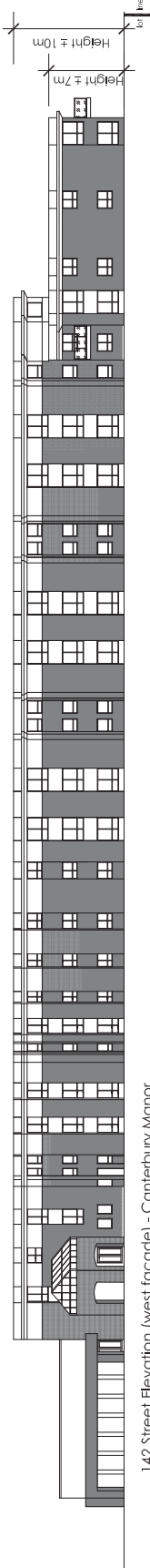


CANTERBURY FOUNDATION  
SCALE 1/64" = 1'-0"

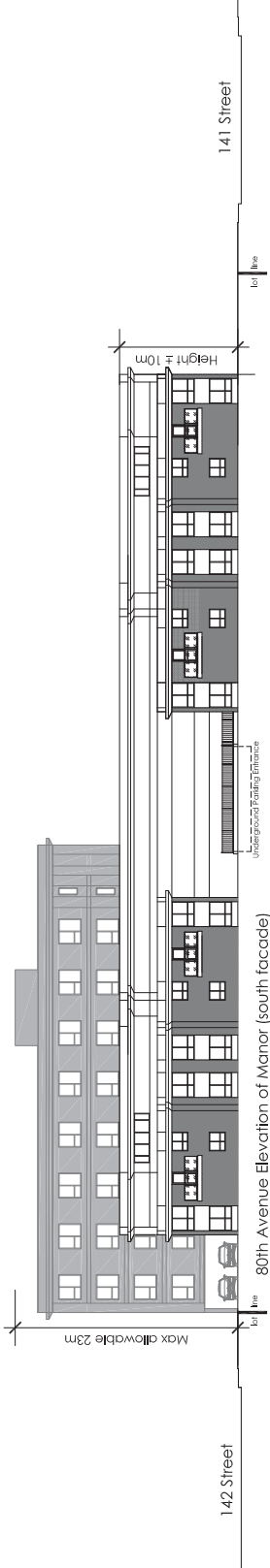
**bennett** architect inc.  
4212 - 98 Street NW  
Edmonton, Alberta T6E 6A1  
Tel: 780.451.4376  
info@bennettarchitect.ca



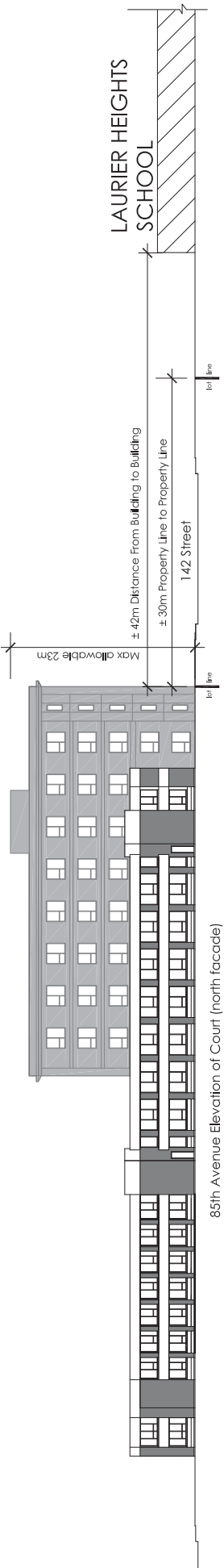
142 Street Elevation of Court (west facade) - Canterbury Court



142 Street Elevation (west facade) - Canterbury Manor



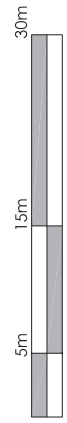
80th Avenue Elevation of Manor (south facade)

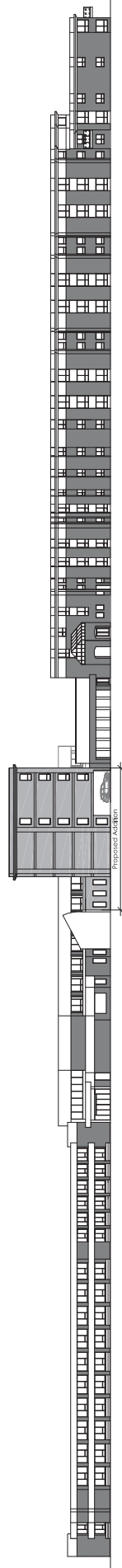


85th Avenue Elevation of Court (north facade)

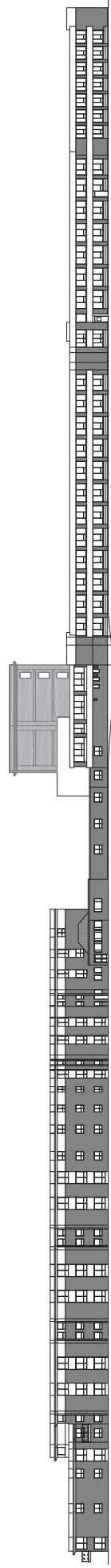
Note: Facade of proposed addition to be developed in accordance with development regulations

**APPENDIX II - ELEVATIONS**

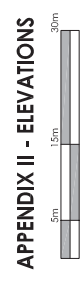


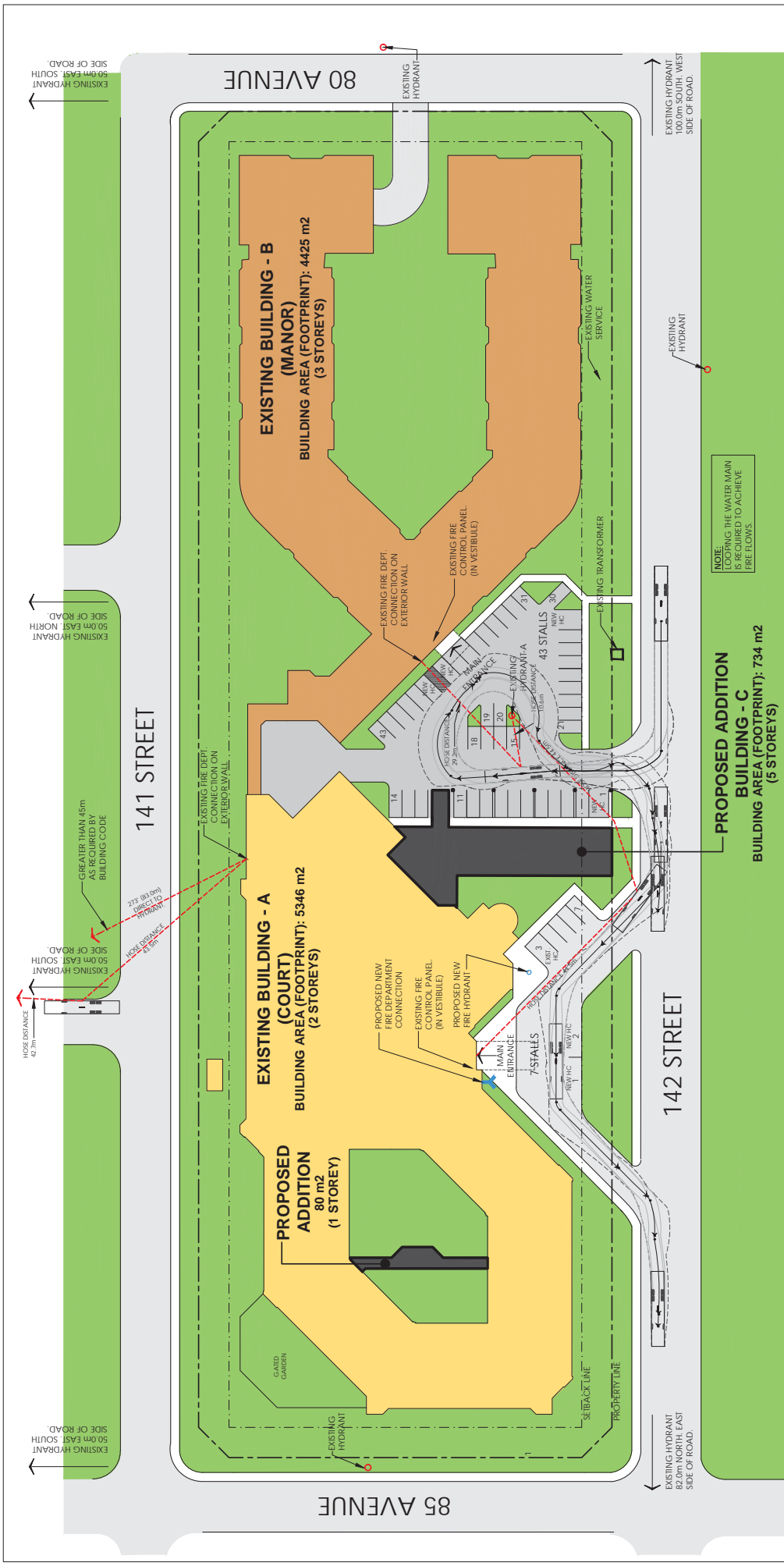


142 Street Elevation (overall west facade) - Canterbury Court & Canterbury Manor



141 Street Elevation (overall east facade) - Canterbury Court & Canterbury Manor





**bennett architect inc.**  
4212 - 98 Street NW  
Edmonton, Alberta T6E 6A1  
Tel: 780.451.4376  
info@bennettarchitect.ca

CANTERBURY FOUNDATION	DATE	07/28/2017
CANTERBURY COURT FIRE ACCESS PLAN	PROJECT	1325-05
SCALE	1/64" = 1'-0"	



**APPENDIX III - FIRE ACCESS PLAN**