

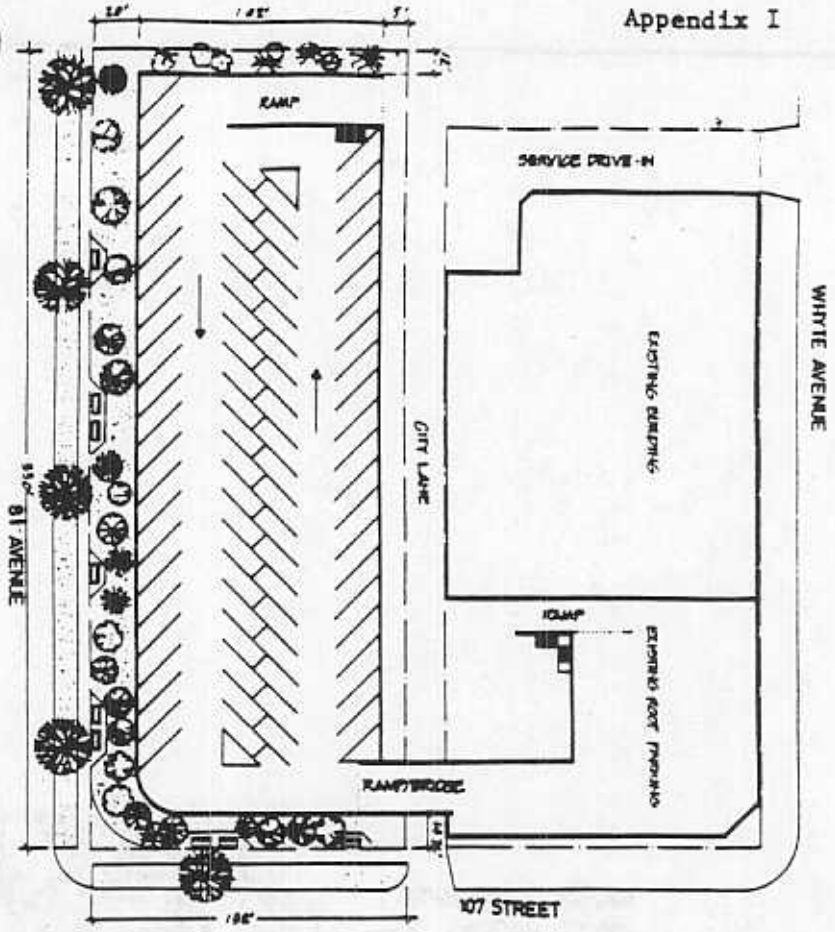
Certified a true copy of Schedule
A as referred to in Bylaw No. 9040

[Signature]

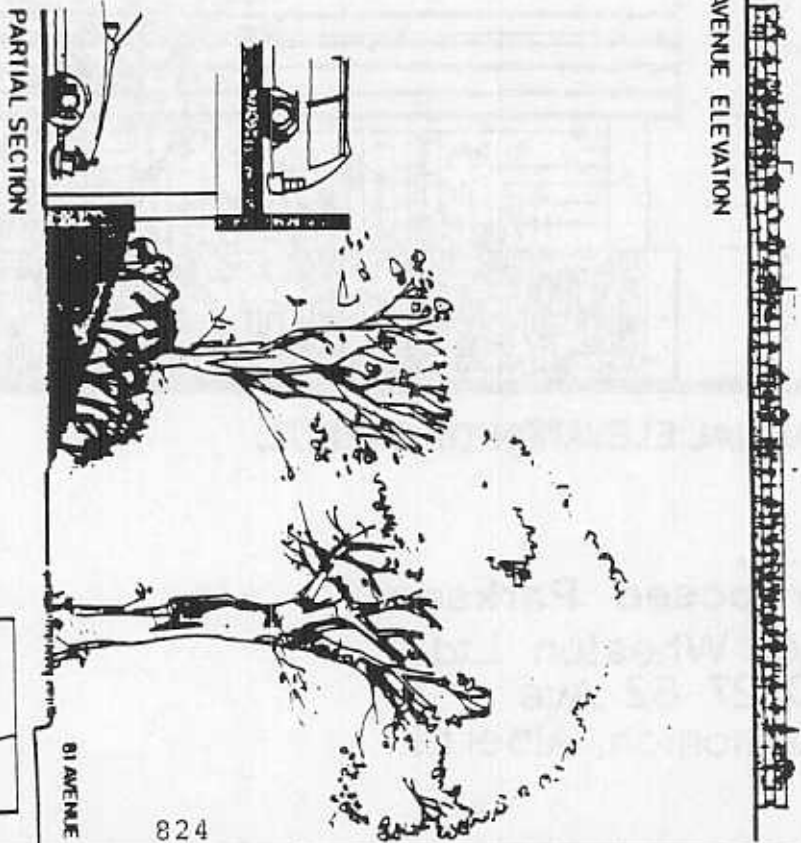
City Clerk



SITE PLAN
Proposed Parkade
Don Wheaton Ltd
10727 82 Ave
Edmonton, Alberta.

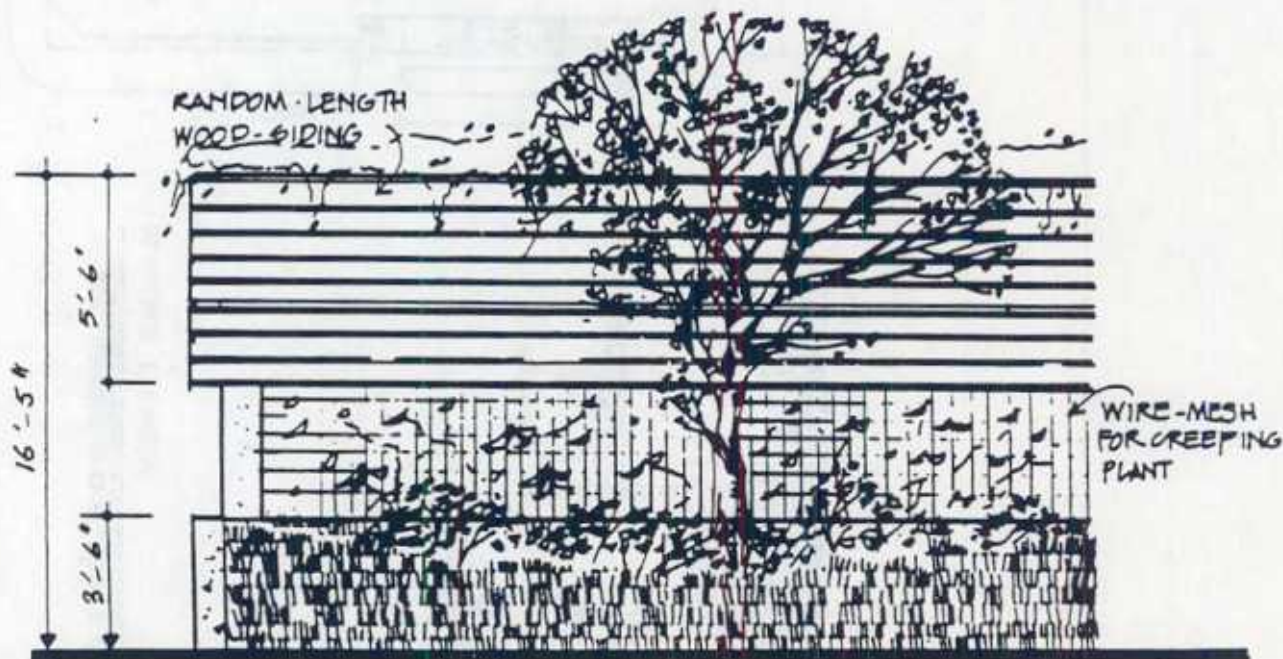


81 AVENUE ELEVATION



REV 18 01 18





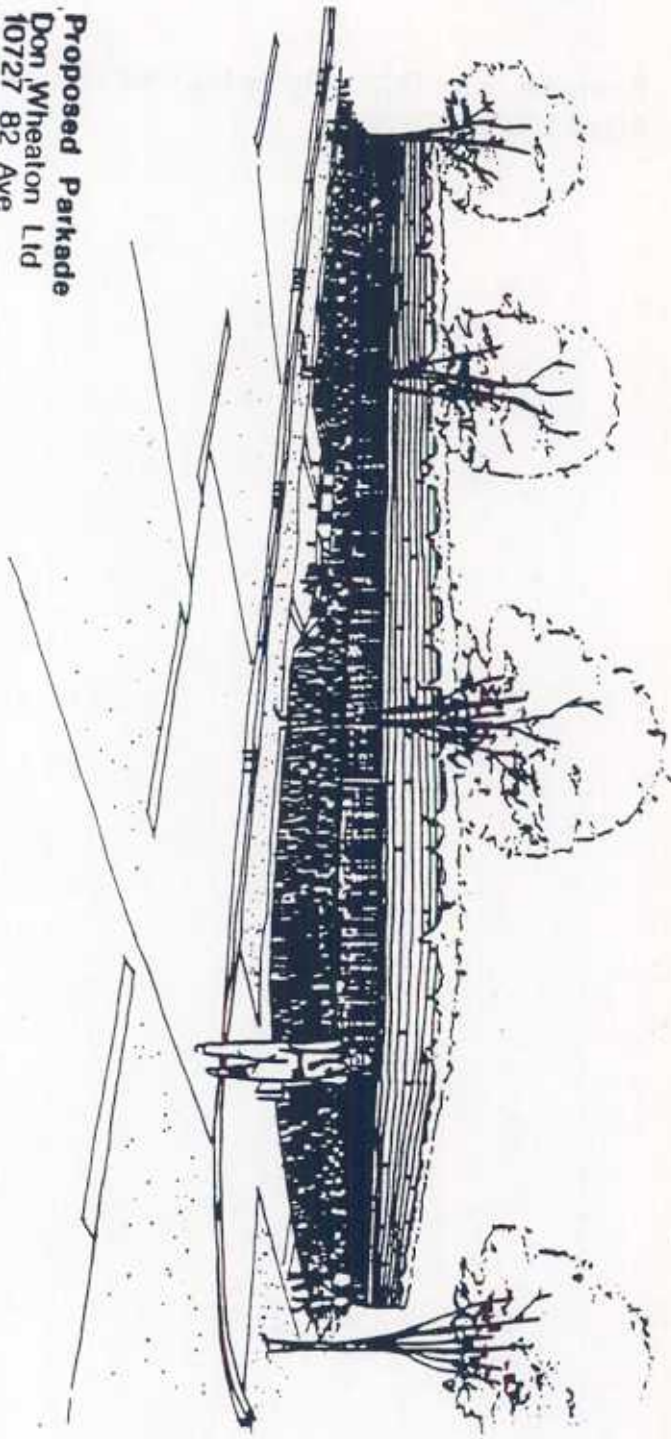
PARTIAL ELEVATION (81 AVENUE)

Proposed Parkade
 Don Wheaton Ltd
 10727 82 Ave
 Edmonton, Alberta.

Planner Architects Inc.
 Suite 1001, 10015 101 Street
 Edmonton, Alberta
 Canada T5J 2E2
 Telephone 463 0238

PLAN *ex*

Proposed Parkade
Don Wheaton Ltd
10727 82 Ave
Edmonton, Alberta.



07 of 16