

1 LAYOUT PLAN

SCALE = 1:200



LDA07-0510- DC2 Rezoning Glenora - RE: Bankers & Traders Building Renovation City of Edmonton Planning Application #066178023-002 (DC2-File # 83-145,732-DC2 Bylaw)

ACCESS LANE

COMMERCIAL BUILDING
(REFER TO BUILDING ELEVATION DRAWINGS)

PARKING

PARKING

4 - EXISTING MATURE MT. ASH TREES [CAUTION: DO NOT DAMAGE - PRUNE AS NECESSARY]

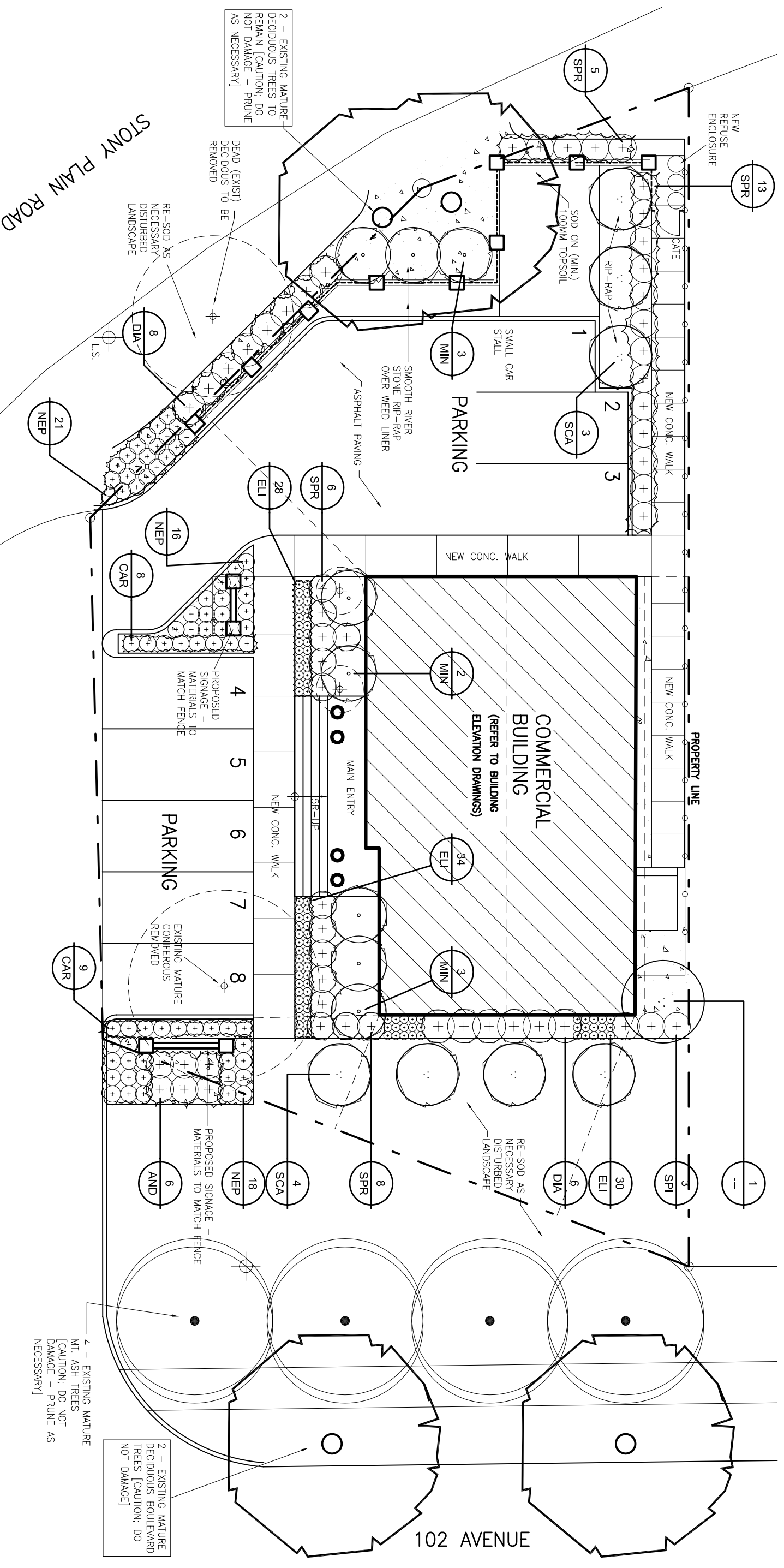
2 - EXISTING MATURE DECIDUOUS BOULEVARD TREES [CAUTION: DO NOT DAMAGE]

2 - EXISTING MATURE DECIDUOUS TREES TO REMAIN [CAUTION: DO NOT DAMAGE - PRUNE AS NECESSARY]

DEAD (EXIST) DECIDUOUS TO BE REMOVED

RE-SOD AS NECESSARY DISTURBED LANDSCAPE

RE-SOD AS NECESSARY DISTURBED LANDSCAPE



1 LANDSCAPE PLAN

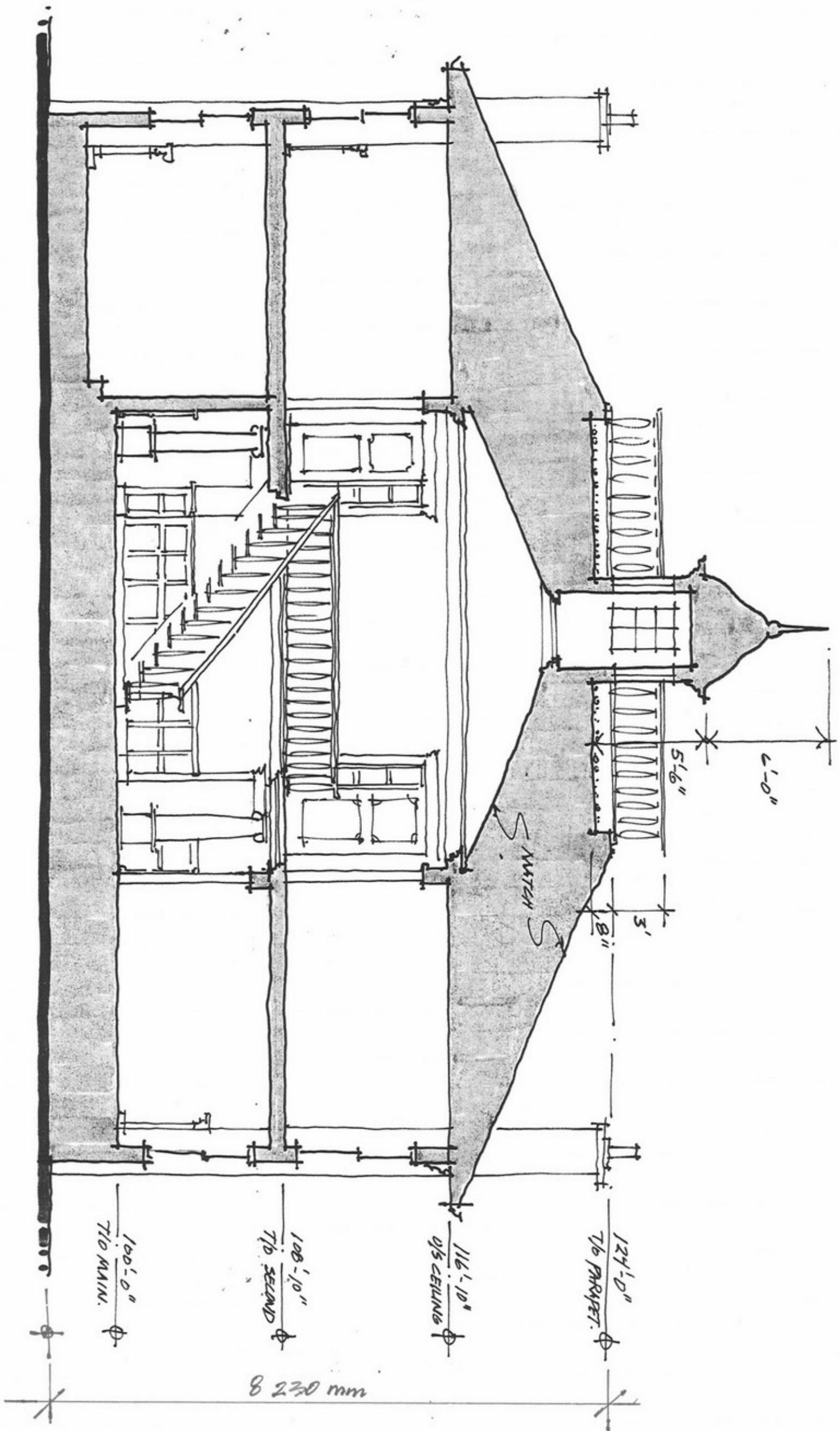
L-2 SCALE 1:200

LDA07-0510- DC2 Rezoning Glenora - RE: Bankers & Traders Building Renovation City of Edmonton Planning Application #066178023-002 (# 83-145,732-DC2 Bylaw)

PLANT LIST

KEY	QTY.	BOTANICAL NAME	COMMON NAME	SIZE	SPACE	CONDITION
SCA	7	POPULUS x. TREMULOIDES	SWEDISH COLUMNAR ASPEN	25mm CALIPER	AS SHOWN	B+B
CAR	18	CARAGANA 'FRUTEX' GLOBOSA	GLOBE CARAGANA	NO.2 CONT.	AS SHOWN	CONT.
MCK	8	PHILADELPHUS VIRGINIALIS	MINNESOTA SNOWFLAKE - MOCKORANGE	NO.5 CONT.	AS SHOWN	CONT.
DIA	14	PHYSOCARPUS OPULOIDUS 'DIABLO'	DIABLO NINEBARK	NO.2 CONT.	AS SHOWN	CONT.
SPR	35	SPRAEA JAPONICA	GOLDMOUND SPIREA	NO.2 CONT.	AS SHOWN	CONT.
SYR	1	SYRINGA RETICULATA	JAPANESE TREE LILAC	NO.5 CONT.	AS SHOWN	CONT.
ELI	92	FESTUCA GLAUCA 'ELIJAH BLUE'	ELIJAH BLUE FESCUE	NO.2 CONT.	AS SHOWN	CONT.
NEP	55	NEPATA 'WALKER'S LOW'	WALKER'S LOW CATMINT	NO.2 CONT.	AS SHOWN	CONT.
AND	6	JUNIPERUS HORIZONTALIS	HORIZONTAL JUNIPER - ANDORRA	NO.2 CONT.	AS SHOWN	CONT.

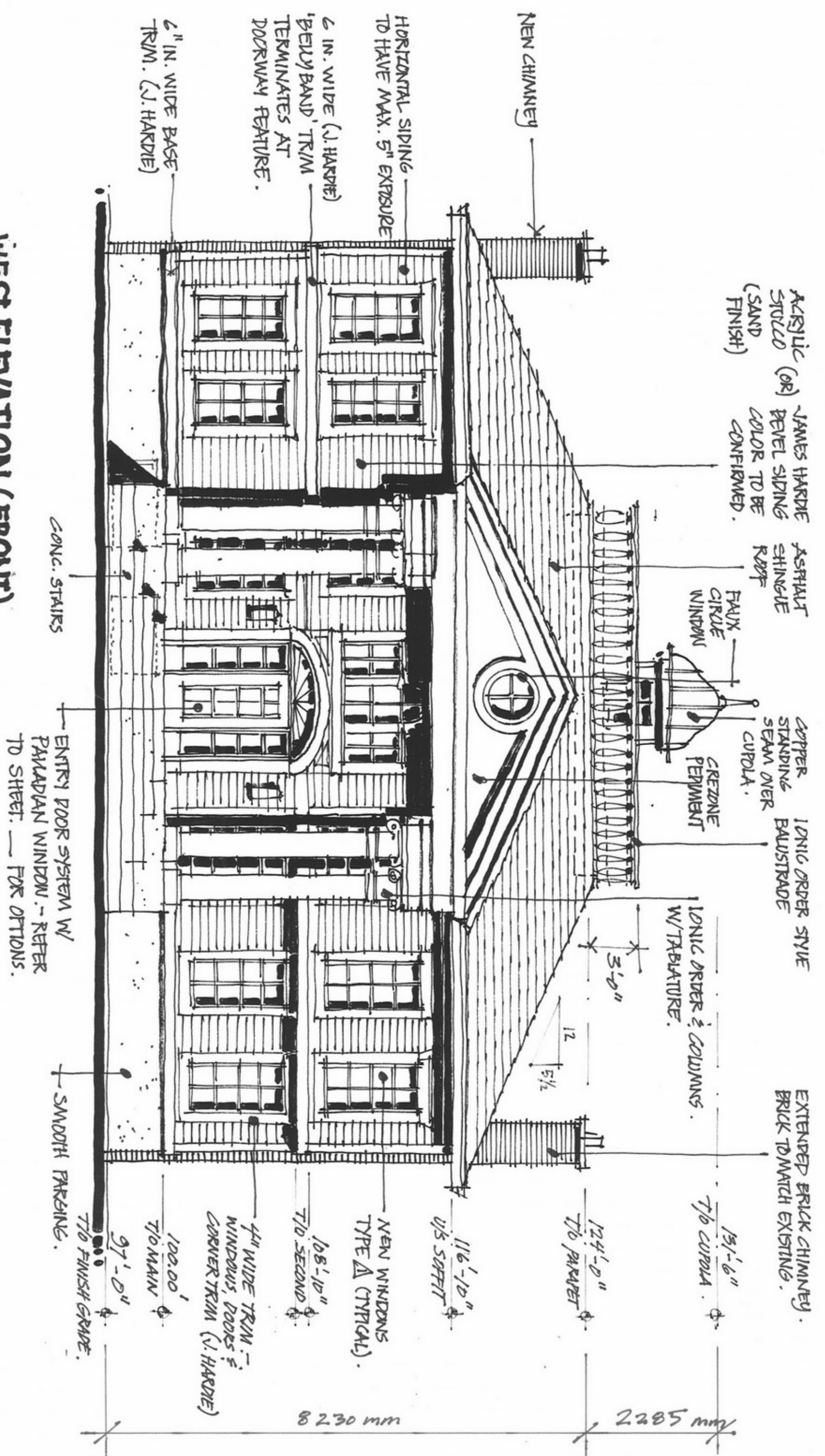
NOTE: REFER TO SHEET L1.02 FOR TYPICAL PLANTING DETAILS AND SPECIFICATIONS

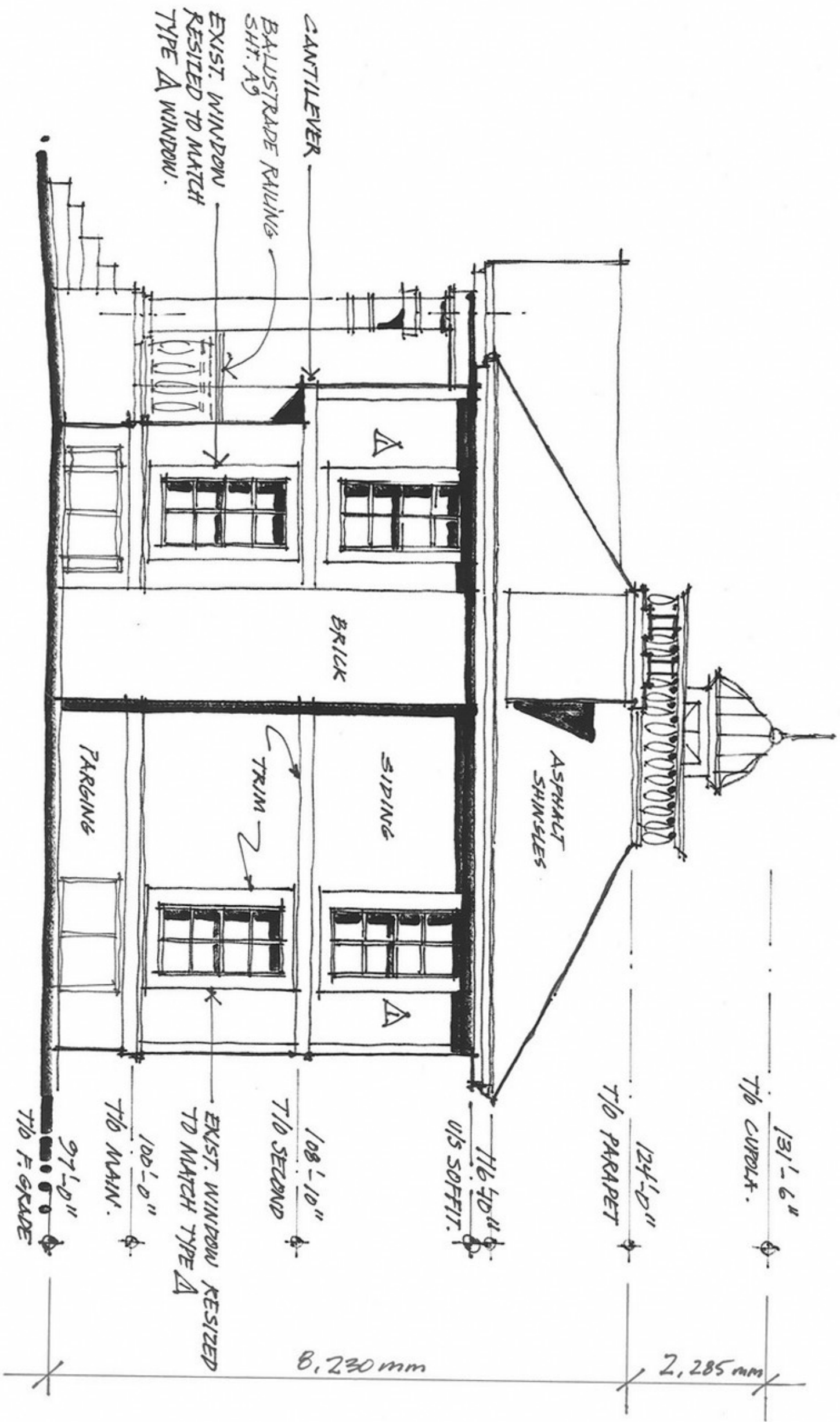


BUILDING SECTION A-A
 $\frac{3}{16}'' = 1'-0''$

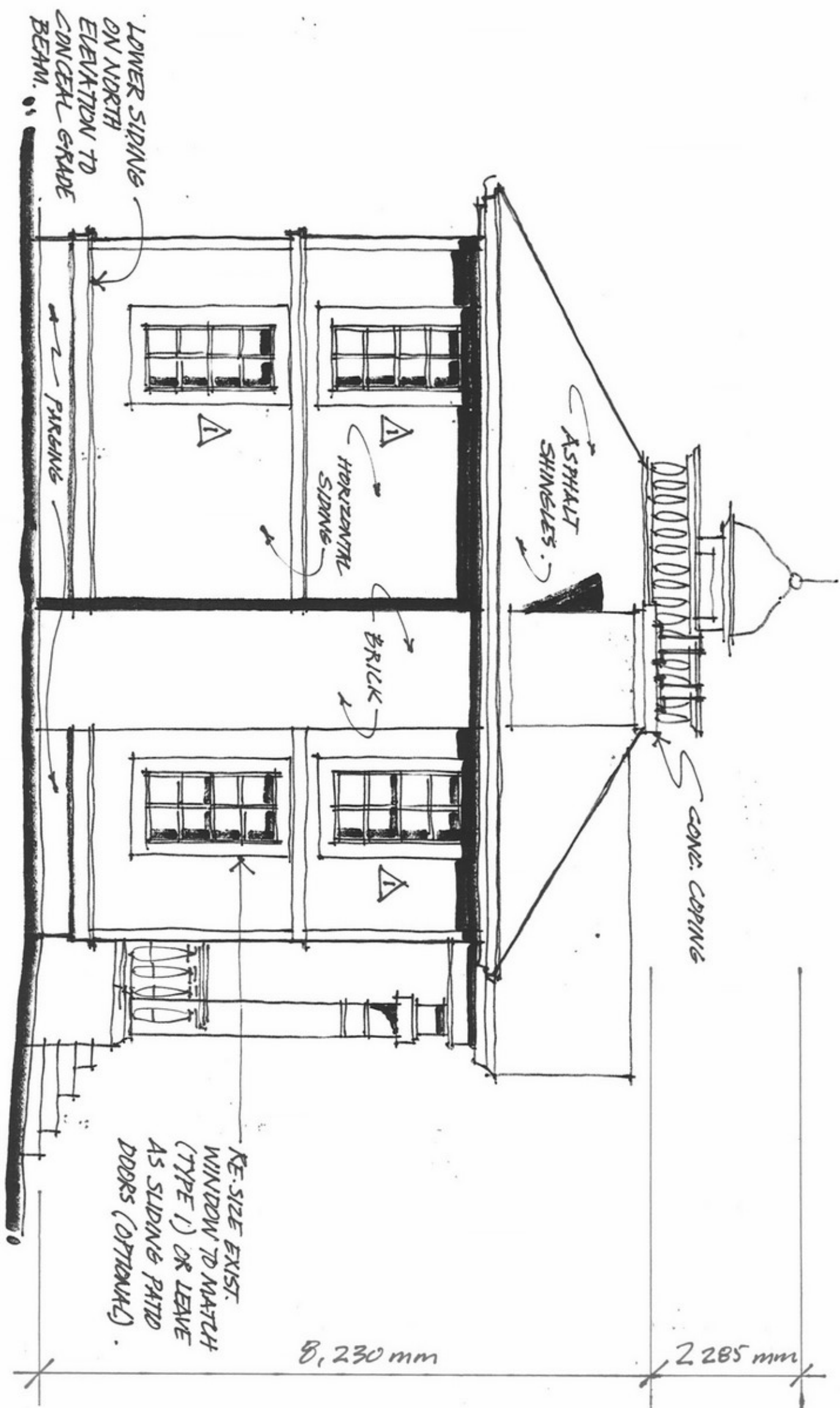
A4.1

WEST ELEVATION (FRONT)
 $\frac{3}{16}'' = 1'-0''$



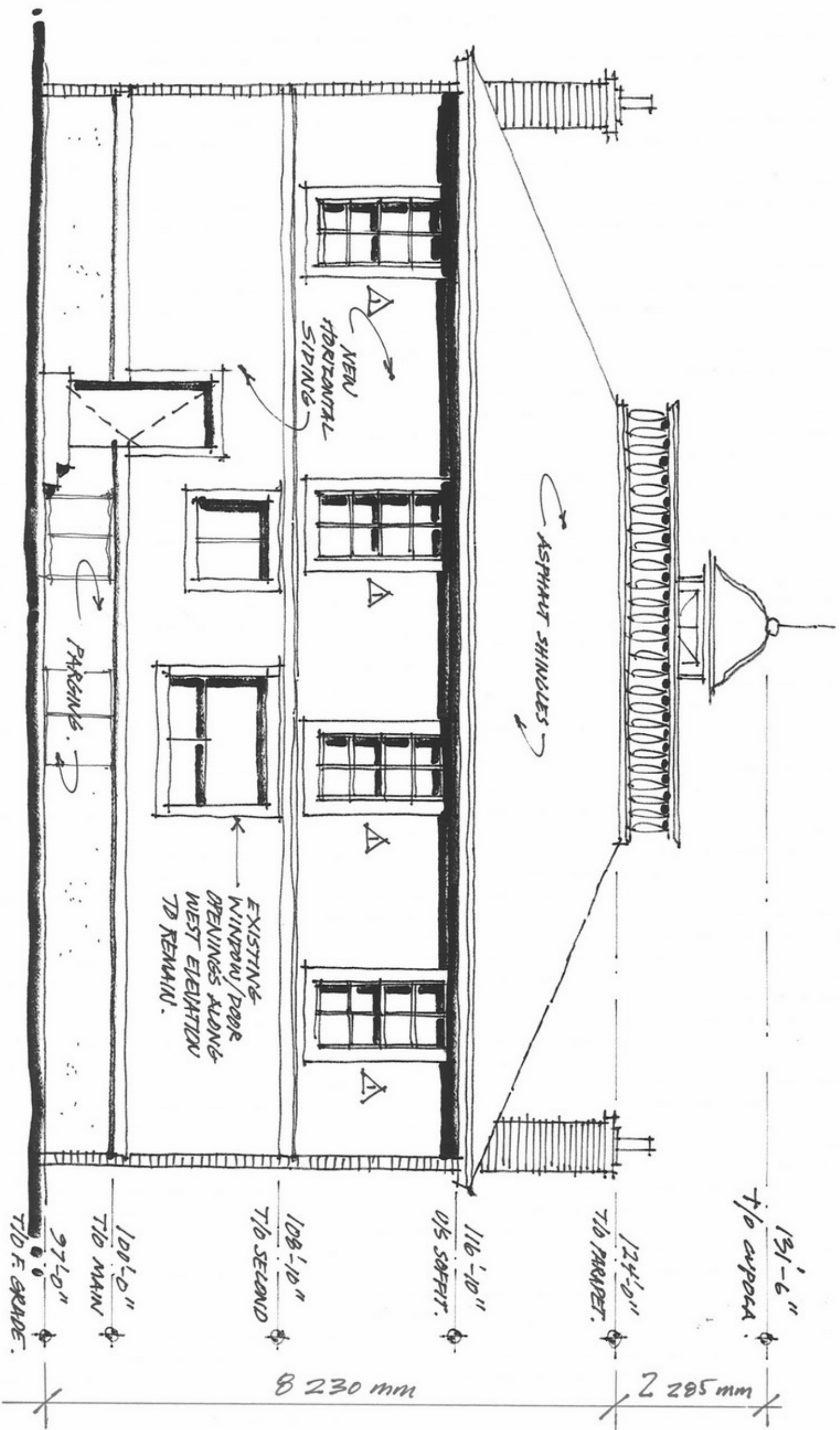


SOUTH ELEVATION (RIGHT)
 3/16" = 1'-0"



NORTH ELEVATION (LEFT)

3/16" = 1'-0"



EAST ELEVATION (BACK)
 $\frac{3}{16}'' = 1'-0''$