

**Plant List:**

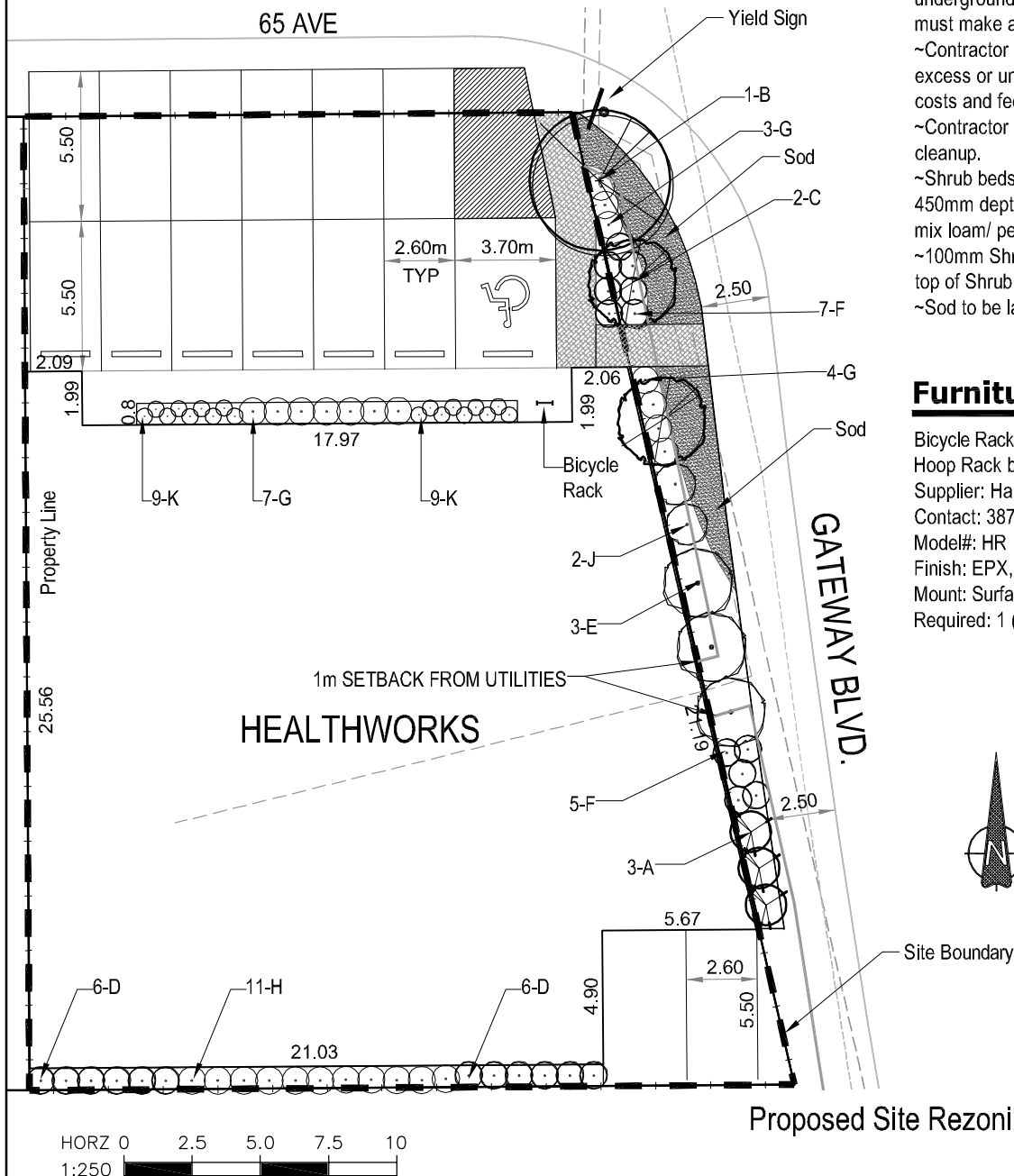
KEY	QTY.	BOTANICAL NAME	COMMON NAME	SIZE
A	3	Populus tremula 'Erecta'	Swedish Columnar Aspen	60mm Cal.
B	1	Prunus virginiana 'Schubert'	Schubert Chokecherry	60mm Cal.
C	2	Syringa Reticulata 'Ivory Silk'	Ivory Silk Japanese Tree Lilac	60mm Cal.
D	12	Shepherdia canadensis	Russet Buffaloberry	450-600mm Ht.
E	3	Cotoneaster acutifolius	Peking Cotoneaster	600-750mm Ht.
F	12	Eunonymus nana 'Turkestanica'	Turkestanica Burning Bush	450-600mm Ht.
G	14	Physocarpus opulifolius 'Tilden Parks'	Tilden Parks Ninebark	450-600mm Ht.
H	11	Potentilla fruticosa 'Abbotswood'	Abbotswood Potentilla	300-450mm Ht.
J	2	Ribes alpinum	Alpine Currant	450-600mm Ht.
K	18	Hosta spp. var. Francee	Francee variety Hosta	2 yr.

**Notes:**

- ~Contractor responsible for locating all utilities prior to construction.
- ~Contractor responsible for any damage to marked utilities or as a result of not contacting the appropriate utilities.
- ~Contractor to verify all quantities prior to construction.
- ~Contractor to notify owner's representative of any discrepancies.
- ~Plant material to be true to type, size and condition as specified.
- ~Contractor is responsible for any damage to landscaped areas, pavement, concrete and underground utilities which are to remain and must make all necessary restorations and repairs.
- ~Contractor is responsible for hauling of all excess or unsuitable materials off site and pay all costs and fees associated therewith.
- ~Contractor is responsible for general site cleanup.
- ~Shrub beds to be excavated and prepared with 450mm depth lightly compacted topsoil mix (3:1:1 mix loam/ peat/ sand).
- ~100mm Shredded wood mulch to be applied to top of Shrub Bed.
- ~Sod to be laid on 100mm depth topsoil.

**Furniture Schedule:**

- Bicycle Rack
- Hoop Rack by Dero
- Supplier: Habitat Systems Inc.
- Contact: 387-3619
- Model#: HR
- Finish: EPX, Colour: Deep Red
- Mount: Surface - FT
- Required: 1 (Parking for 2 Bikes)



City of Edmonton  
 Proposed Site Rezoning - Healthworks Site  
 65 Avenue Between  
 104 Street and Gateway Boulevard