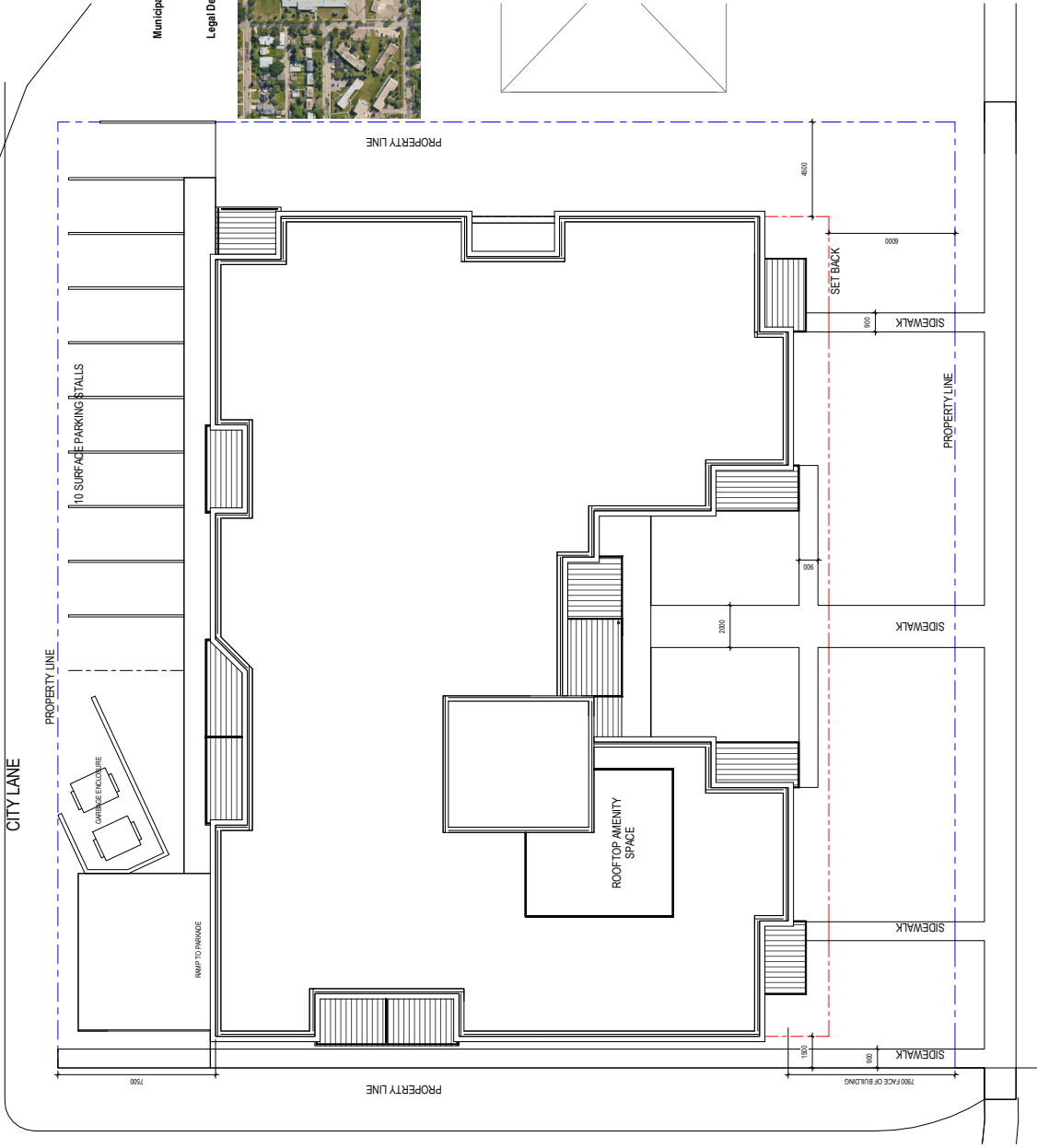


NO	DATE	REVISION	BY

**Municipal Address:** 11016 - 109A AVENUE NW, T5H1G7  
11012 - 109A AVENUE NW, T5H1G7

**Legal Description:** Lot 13, Block 108, Plan 2103HW  
Lot 13, Block 108, Plan 2103HW



**Group2**  
architecture  
interior design

Group2 Architecture Interior Design Ltd.  
www.group2.ca E: general@group2.ca  
Red River 1-403-340-2200 Calgary 403-772-2511  
Edmonton 780-447-2720 Saskatoon 306-972-2120

**109A AVENUE  
APARTMENTS**

OWNER FILE  
SITE PLAN

CHECKED BY	DATE
Author	03/20/2015
FILE	REVISION
15040	A1.01

109A AVENUE

REVISIONS		
NO	DATE	REVISION

REVISION

DATE

REF PLAN



2 | North  
SCALE: 1/8"



1 | South  
SCALE: 1/8"

**Group2**  
architecture  
interior design  
Group2 Architecture Interior Design Ltd.  
www.group2.ca E: general@group2.ca G: group2.ca  
Redwood 1, 403.340.2200 Calgary 2, 403.777.2511  
Brimley 1, 780.447.2790 Saskatoon 1, 306.972.2120

109A AVENUE  
APARTMENTS

DRAWN BY: C  
PROJECT: ELEVATIONS NORTH  
AND SOUTH

CHECKED BY: MANN  
CHECKER: AUTHOR  
DATE: 06/21/12

15040 | A3.01  
FILE | DRAWING  
REVISION

Appendix II: North / South Elevations

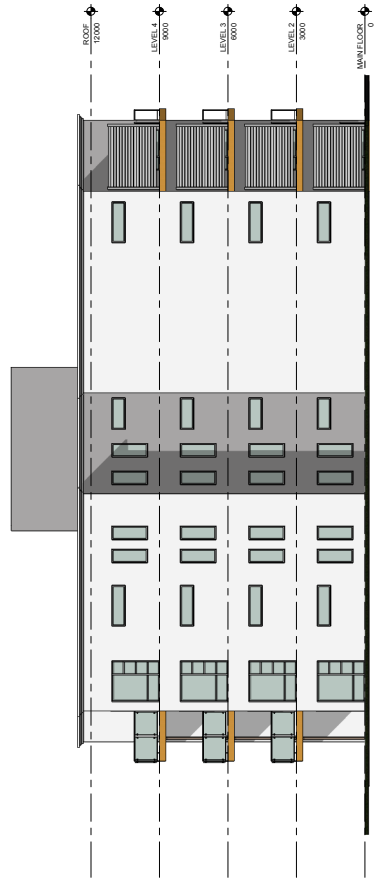
REVISIONS		
NO	DATE	REVISION

DATE: \_\_\_\_\_  
 REVISION: \_\_\_\_\_  
 BY: \_\_\_\_\_

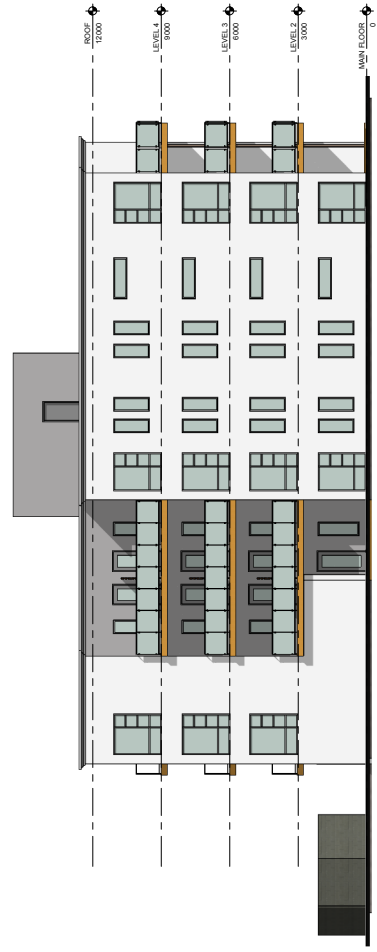
REVISION: \_\_\_\_\_

SEAL: \_\_\_\_\_

REF PLAN: \_\_\_\_\_



1 | East  
 SCALE: 1/100



2 | West  
 SCALE: 1/100

**Group2**  
 architecture  
 interior design  
 Group2 Architecture Interior Design Ltd.  
 www.group2.ca E: general@group2.ca G: group2.ca  
 Red Deer 1-403-340-2200 Calgary 403-777-2511  
 Edmonton 1-780-467-2790 Saskatoon 1-306-972-2150

109A AVENUE  
 APARTMENTS

DRAWN BY: C  
 EAST AND WEST  
 ELEVATIONS EAST

CHECKED BY: MANN  
 CHECKER: AUTHOR  
 DATE: 03/23/15

15040 A3.02  
 FILE DRAWING REVISION

Appendix III: East / West Elevations

## **Appendix IV - Sustainability Strategies and Targets**

### **Storm water Management**

- The development shall implement a storm water management plan that results in a 25% decrease in the rate and quantity of storm water runoff when compared to the existing site.

### **Heat Island Effect**

- A minimum of 50% of the building roof area shall be covered with high emissivity roofing (emissivity of .9 or greater), vegetated roofing, or a combination thereof.

### **Water Efficiency**

- The design shall employ strategies that in aggregate use 20% less potable water than water use baseline calculated for the building per the Canadian Green Building Council LEED Reference Guide 2004

### **Water Efficient Landscaping**

- The design shall apply high efficiency irrigation technology, captured rain water, and/or drought tolerant landscaping to reduce potable water consumption for irrigation by 50% over conventional means, factored over the course of a typical year.

### **Innovative Wastewater Technologies**

- The design shall reduce the use of municipally provided potable water for building sewage conveyance by 10% as calculated per the Canadian Green Building Council LEED Reference Guide 2004 (not including irrigation).

### **Water Use Reduction**

- The design shall employ strategies that in aggregate use 10% less potable water than water use baseline calculated for the building per the Canadian Green Building Council LEED Reference Guide 2004 (not including irrigation).

### **Energy and Atmosphere Reduced Energy Consumption**

- The design shall reduce energy consumption by 10% over the comparable Canadian Model National Energy Code Building (1997).

### **Lighting**

- Lighting in all residential common areas and commercial areas shall exceed the efficiency specified in the Model National Energy Code for Buildings by 10%. (1997).

### **Materials and Resources**

- Recycled Content - The design shall specify building materials such that 7.5% of the total value of materials used in the development consists of post-industrial and post- consumer recycled materials.

- Regional Materials - The design shall specify building materials such that 80% of all aggregates used in the development are extracted, processed and manufactured within 800 km of the development.

#### Indoor Environmental Quality

- Low-Emitting Materials - The design shall specify paints with VOC emissions that do not exceed the VOC and chemical component limits of Green Seal's Standard SS-11 January 1997 requirements or acceptable alternate standard.