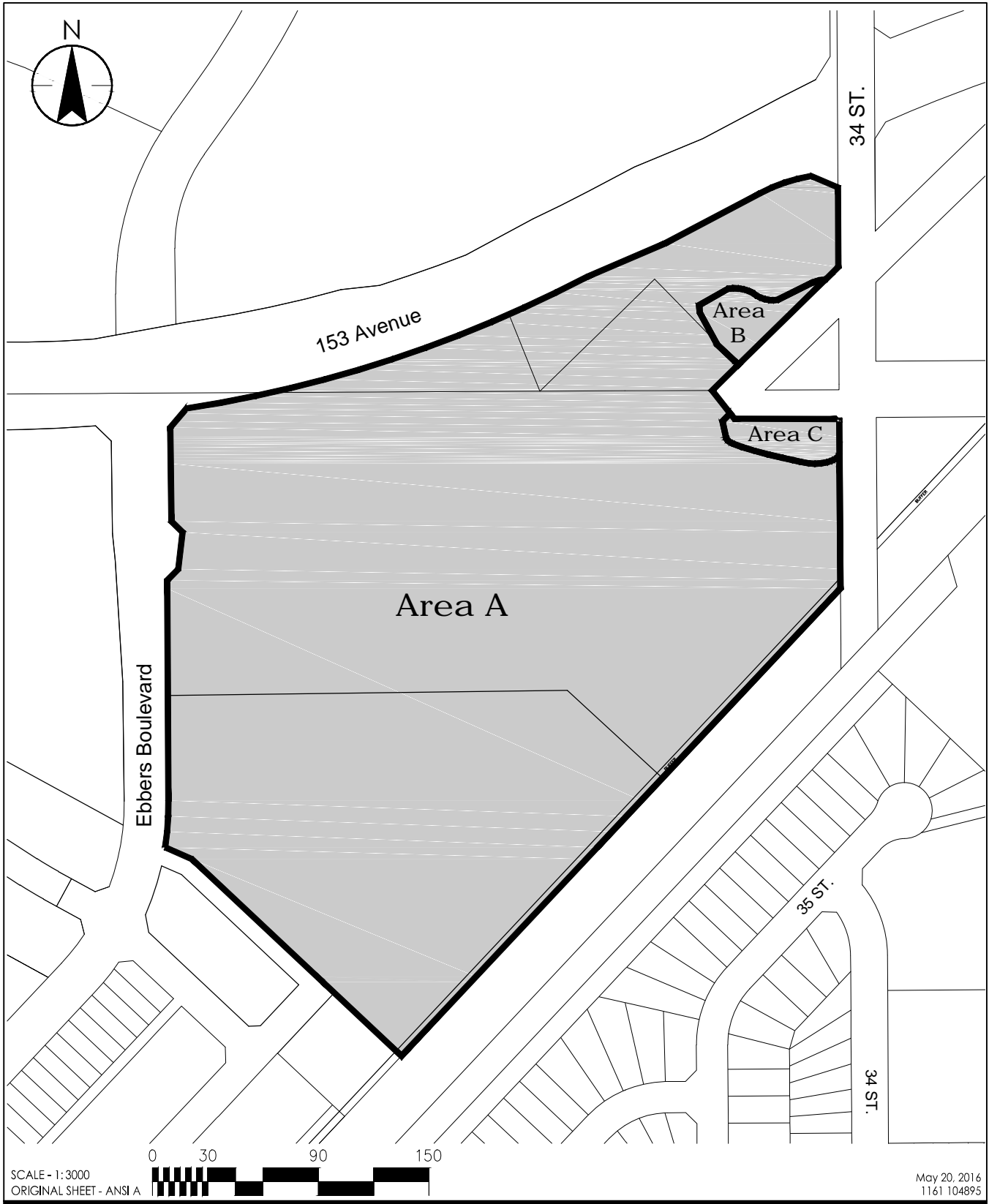


V:\1161\active\1161104895\drawing\model_files\planning\rezoning\dc2_appendices\Commercial Site\RLZ_ManningCentre_DC2_20may2016.dwg



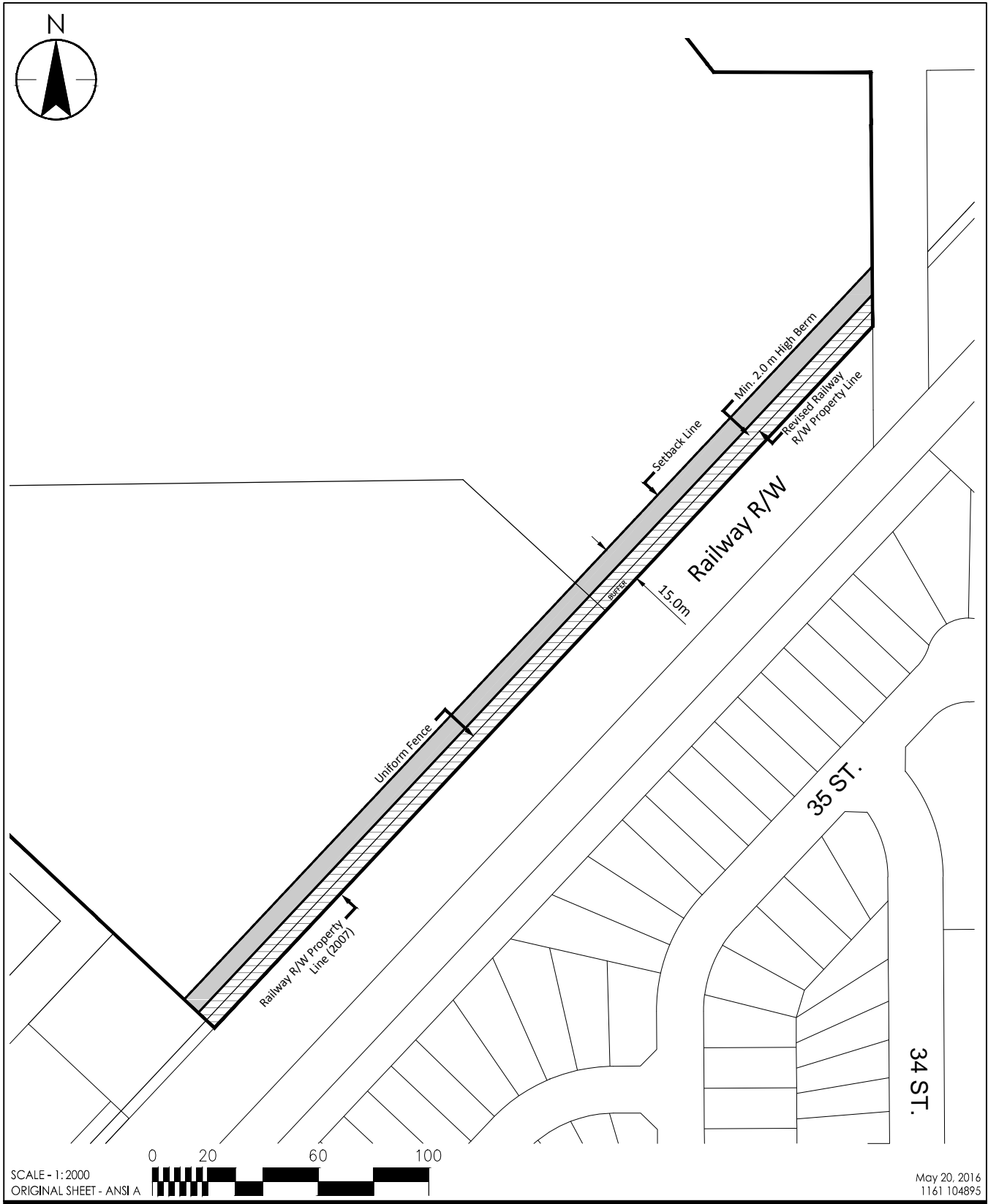
10160-112 Street
 Edmonton, AB T5K 2L6
 www.stantec.com

Client/Project
 ALBARI HOLDINGS LTD.
 MANNING CENTRE
 REZONING

Figure No.
 Appendix I

Title
 DC2 - Area
 Pt. NE - 25, 53, 24, W4;
 Pt. SE - 36, 53, 24, W4 ; and,
 LT A, Plan 4073NY

V:\1161\active\1161104895\drawing\model_files\planning\rezoning\vc2_appendices\Commercial Site\RZ_ManningCentre_DC2_20may2016.dwg



SCALE - 1:2000
ORIGINAL SHEET - ANSI A

May 20, 2016
1161 104895



10160-112 Street
Edmonton, AB T5K 2L6
www.stantec.com

Client/Project
ALBARI HOLDINGS LTD.
MANNING CENTRE
REZONING

Figure No.
Appendix II

Title
COMMERCIAL AREA