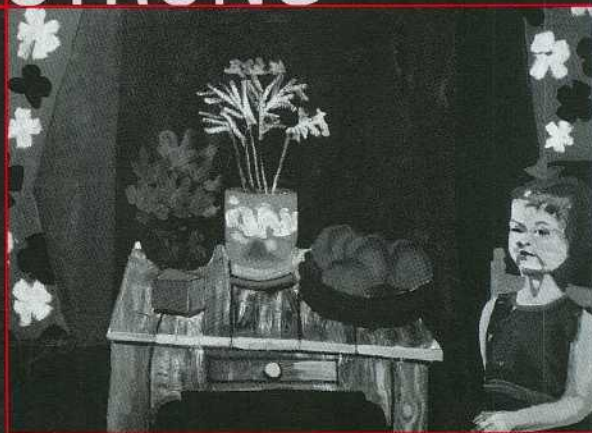


80 YEARS STRONG

2004 YEAR IN REVIEW





Mission

The Edmonton Art Gallery is a museum dedicated to excellent and innovative practice in programming, stewardship, and presentation of visual arts in Western Canada and across the nation.

Vision

The Edmonton Art Gallery creates a welcoming and engaging environment where people are motivated to transform their understanding of the world by connecting with the visual arts.

Ted Godwin
*Miz Beaver's Cafeteria
& Mr. Brook Trout's
Playground #6*, 1980
Oil on canvas
Gift of
Imperial Oil Limited

TABLE OF CONTENTS

1	Message from the Chairman of the Board
2	Message from the Executive Director
4	List of Exhibitions 2004
6	Public Programs 2004
11	Events 2004
12	Art on the Block
13	Art Rental and Sales Gallery
15	Acquisitions 2004
19	Community Support 2004
20	Sponsors 2004
23	Volunteers 2004
24	Board and Staff 2004

Cover image:
Maxwell Bennett Bates
Still Life, 1965
Oil on canvas

Purchased with funds from the
Dr. Max and Mrs. Iris Stern
Endowment Fund

A New Vision

Message from the Chairman of the Board



Allan E. Scott
Chairman, Board of
Directors

In 2004, The Edmonton Art Gallery celebrated 80 years as the leading visual arts centre in Alberta. In that time, both the Gallery and the city that is our home have changed tremendously. I believe that both the City of Edmonton and the EAG are headed toward an even brighter future and that in many ways, our destinies are intertwined. We at the EAG have begun to put in place a foundation upon which to build that exciting and successful future.

New leadership and a revitalized staff at the Gallery have created a vigorous and forward looking environment that promises to help us to build a New Vision for the EAG. That Vision can earn us a place as one of Canada's most vibrant and important centres of visual arts in the coming century. This process began in 2004 with a stronger bond to our community through quality programming that brought record numbers of people into the Gallery and a higher level of awareness in the city, the surrounding area and throughout Alberta.

While we are proud of the achievements of the EAG and recognize that great progress has been made, the Board knows that many challenges still lie ahead. We feel confident that we have the structures, people and resources in place to meet those challenges. I feel that I speak for the whole Board when I say that the new spirit of pride and enthusiasm that characterizes the management and staff at the Gallery is felt with equal or greater conviction among the Board.

Our focus over the coming years must be on a new gallery building that will help us achieve the high goals we have set for the EAG as a leading centre for the visual arts. If 2004 was a year of preparation for this New Vision, the next five years will be a time of fulfillment, of making that Vision a reality. We look forward to working closely with all three levels of government, individual donors, corporate sponsors and the community to share with us in building this New Vision. We want not only funding, but ideas. We are committed to ensuring that our New Vision is a vision that responds to the needs and aspirations of our communities so that The Edmonton Art Gallery truly plays a leading role in the revitalization of our city, our province and our country, putting the visual arts the centre of a creative and inclusive future.

A handwritten signature in black ink that reads "Allan E. Scott". The signature is fluid and cursive.

Allan E. Scott
Chairman, Board of Directors

Transformation, Rebirth

Message from the Executive Director

There is only one way to characterize 2004 at The Edmonton Art Gallery – exciting! It was a year of transformation, rebirth and growth. We set out to reconnect with our community in a meaningful way. We said that the primary way we would know if we were achieving that goal was through increased attendance at exhibitions and more participation in Gallery programs. I am pleased to say that we have met the challenge, having witnessed record visitor numbers and program enrolment, especially in the education and group tours.



Tony Luppino
Executive Director

These results were achieved partially through significant investment in infrastructure – the building – and marketing. A major renovation to our first floor Gallery to bring it up to international museum standards allowed us to bring the works of important and beloved artists like James Wilson Morrice, Alex Colville and Pablo Picasso to Edmonton. A significant investment in advertising paid off by attracting visitors to not only shows of well-known artist but to our innovative contemporary exhibitions as well. But above all, it is the quality of these programs that brought visitors back and helped spread the word and attract new visitors.

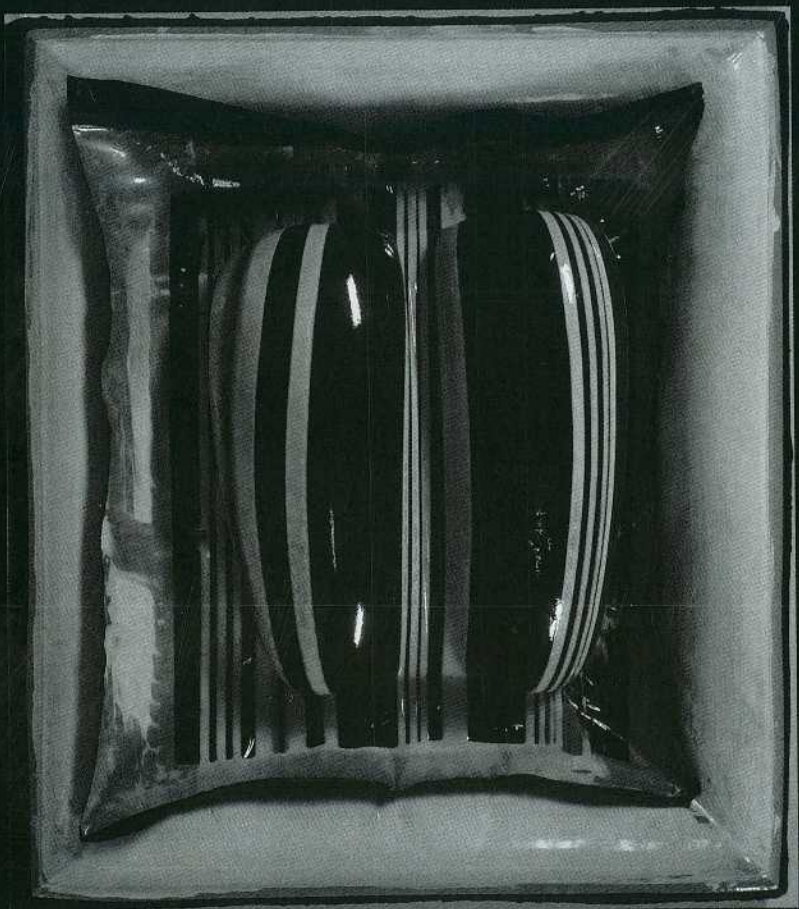
These successes are not an end to our efforts but signal the beginning of a new, revitalized life for the EAG. Many challenges remain. Our aging building and escalating operating costs in areas beyond our control like utilities and insurance continue to place heavy financial demands on us. In order to ensure that we maintain strong programming and reasonable pricing policies so that we are truly accessible to the whole community, we must be more aggressive in building our individual donor base and in attracting significantly higher levels of corporate sponsorship. Our government funding at all levels has not kept up with increasing costs and so we must find other ways to make ends meet. We are making progress in these areas primarily because staff is working harder than ever, making the extra effort every day. Their exceptional contribution in energy and creativity are a major factor in the progress we have made. One area that deserves special note is the improved awareness of the Gallery through heightened media coverage.

Finally, in 2004 we began earnestly to prepare for the construction of a new Gallery building, a total transformation of the existing site on Sir Winston Churchill Square that will be a fitting home for our New Vision. We look forward to 2005 with enthusiasm and anticipation and thank our supporters, Members, our Board and other volunteers, local media and the community for their contribution to creating a centre for the visual arts in Edmonton that is among the finest in North America.

A handwritten signature in dark ink, which appears to read "Tony Luppino". The signature is fluid and cursive.

Tony Luppino
Executive Director

Clay Ellis
Buttercup, 2000
Acrylic polyurethane
Gift of the artist



List of Exhibitions 2004

Spellbound: Dawn McLean

January 25 – March 20, 2005
Curated by Fiona Connell and Nicole Reeves

Maxwell Bates: At the Crossroads of Expressionism

February 21 – April 18
Curated by Michael Morris and Nancy Townshend. This exhibition was produced with the generous assistance of the Department of Canadian Heritage-Museums Assistance Program

Storyboard

February 21 – May 24
Curated by Shane Golby

Ken Macklin: About Looking

March 6 – June 6
Curated by Catherine Crowston

Rob, Terry and Tom O'Flanagan: Field Notes

March 6 – June 6
Curated by Catherine Crowston

Lyndal Osborne and John Freeman: Tidal Trace

March 6 – June 6
Curated by Catherine Crowston
Presented by The Dish & The Runaway Spoon

Images of Edmonton

May 1 – September 19
Curated by Catherine Crowston

James Wilson Morrice and the European Landscape

June 5 – August 15
Organized and toured by the Musée des beaux-arts de Montréal
Media Sponsor: CTV-CFRN

My Edmonton: 100 Years / 100 Pictures

June 5 – September 19
A community project organized by Natalie Roy
Sponsored by WestJet
Media sponsor: The Edmonton Journal

THRILLER

Allyson Clay, Janet Cardiff and George Bures Miller, Stan Douglas, Chloe Piene, Guy Maddin, Christian Marclay, Natalie Melikian, Mina Totino, Jane and Louise Wilson, Jin-me Yoon
June 19 – September 6
Curated by Catherine Crowston

Dean Drever: If it ain't white, it ain't right

June 19 – September 6
Curated by Catherine Crowston
Sponsored by The Dish & The Runaway Spoon

Alex Colville: Return Paintings, Drawings and Prints 1994-2002

August 28 – October 17
Organized and toured by the Art Gallery of Nova Scotia
Sponsored by AIM Trimark

Janet Cardiff: Forty-Part Motet

September 18 – November 28
Organized and toured by the National Gallery of Canada

sense

Millie Chen, Karilee Fuglem, Germaine Koh and Claire Savoie
September 18 – November 28
Curated by Catherine Crowston

Kristina Kudryk: A room with a view

September 18 – November 28
Curated by Catherine Crowston

RBC Investments New Canadian Painting Competition

September 22 – October 3
Organized and produced by RBC Investments and Canadian Art Magazine

From Near and Far

September 25 – May 23, 2005
Curated by Shane Golby

Between Borders

September 25 – June 19, 2005
Curated by Shane Golby

Images of Edmonton II

October 9 – February 20, 2005
Curated by Marna Bunnell

***Protean Picasso
Drawings and Prints from the
National Gallery of Canada***

October 30 – January 16, 2005
Organized and toured by the National
Gallery of Canada
Sponsored by Fraser Milner Casgrain LLP

***Revealing Hidden Treasurers:
Your Favourite and Rarely Seen
Works from the EAG Vaults***

December 11 – March 27, 2005
Curated by Tony Luppino

DRAW

December 11 – February 6, 2005
Curated by Marna Bunnell

Marc Siegner: Imagining Home

December 11 – February 6, 2005
Curated by Catherine Crowston

2004 National Travelling Exhibitions

Soundtracks

MacKenzie Art Gallery, Regina
February 14 - May 17, 2004

***Carol Condé and Karl Beveridge:
Public Relations***

Yukon Art Centre
May 27 – July 25, 2004

Soundtracks: Re-Play

The Ottawa Art Gallery
October 8, 2004 – January 9, 2005

The Other Landscape

The McMichael Canadian Art
Collection, Kleinberg
November 27, 2004 – February 13, 2005



Sean Caulfield
Dripping Object, 2000
Acrylic on paper on linen
Purchased with funds from the
Cheryl M. Sutton Endowment Fund

**The Alberta Foundation for the Arts
Travelling Exhibition Program (Trex)**

The Trex program was established in 1986 by the Alberta Foundation for the Arts with the vision that every Albertan would have the opportunity to experience visual art exhibitions in their own communities. This unique program also provides educational support to community schools and increases visibility and access to the AFA Collection of Alberta visual artists as well as The Edmonton Art Gallery. The Trex program is a coordinated effort between AFA, The Edmonton Art Gallery, the Prairie Art Gallery, The Alberta Society of Artists and Medicine Hat Museum and Art Gallery.

EAG had a very successful season travelling up to 21 exhibitions throughout Region 2 in order to accommodate 105 exhibition bookings (100%) in 52 venues in 35 Northern Alberta communities.

In 2004 EAG created 5 new exhibitions which were seen by 88,717 visitors.

Special thanks to all program participants, exhibiting artists and organizations supporting the AFA Travelling Exhibition Program in 2004.

Public Programs 2004

Art of Taste

A popular program that allows visitors to experience art and wine in conjunction with current exhibitions at the EAG. Presented in partnership with Gurvinder Bhatia of VinoMANIA and MADE.

Special Artist Lecture

Alex Colville

A 45-minute slide lecture presentation by artist Alex Colville.

Curator Tours

Nancy Townshend and Michael Morris

On the occasion of the *Maxwell Bates: At the Crossroads of Expressionism*.

Diana Nemiroff

Curator of Modern Art at the National Gallery of Canada and Curator of *Protean Picasso*.

Art for Lunch

The Spring series featured the second season of *Art:21-Art in the Twenty-First Century*, a 4-part video program produced by PBS that examines the work of contemporary visual artists. The Fall series featured videos produced by the National Film Board exploring the work of Canadian women artists.

Outdoor Film Screening

The third annual outdoor film screening produced in partnership with MADE. The 2004 screening featured *The Saddest Music in the World*, a critically acclaimed work by Winnipeg filmmaker Guy Maddin.

Guest Lecture Presentations

The Great Canadian Partnership:

The Group of Seven and the National Gallery of Canada

Dr. Anne Whitelaw, Assistant Professor in the Division of History of Art, Design and Visual Culture in the Department of Art and Design at the University of Alberta.

Expressionism: A to Z

Dr. Steven Harris, Assistant Professor in the Department of Art and Design at the University of Alberta.

History of Video Art

Presentation by Christopher Eamon, Curator of the Richard and Pamela Kramlich Collection and Director of New Art Trust in New York City.

James Wilson Morrice in Venice

Sandra Paikowsky, Professor in the Department of Art History at Concordia University, Montreal.

Narrative in the Art of Janet Cardiff

Victoria Baster from the University of Lethbridge Faculty of Fine Arts.

A Vase is a Vase is a Vase

Paul Bourassa, Curator at the Musée national des beaux-arts du Québec, and co-curator of the exhibition *Picasso & Ceramics*.

Picasso's Reputation

Dr. Steven Harris, Assistant Professor in the Department of Art and Design at the University of Alberta.

Outreach and Community Collaboration

Alberta Society of Artists: A Visit with Artists

The Gallery co-presented an annual lecture series featuring visiting artists from across the province. In addition, a performance about Emily Carr was held in the EAG Theatre in a play entitled *Talking to Trees*.

The Gallery Walk Association of Edmonton

The EAG formed a unique partnership with The Gallery Walk Association of Edmonton for their Spring, Fall and Winter Gallery Walks.

Metro Cinema Society

The complete 5-film cycle screening of Matthew Barney's *Cremaster* was presented in partnership with the EAG.

Society of Northern Alberta Printmakers (SNAP)

Printworld: Recording Contemporary Life in Print was held in our Printmaking Resource Centre. Demonstrations by local artists from SNAP were held on All Day Saturdays and Thursday evenings.

Global Visions Film Festival

The Global Visions Film Festival presented part of its 23rd annual showcase of documentary cinema exploring social justice, human rights, and environmental issues in the EAG Theatre.

The City of Edmonton

On October 8, 2004, Edmontonians celebrated the 100th Anniversary of The City of Edmonton. One of the major events of the day-long celebrations was the re-enactment of the very popular high school team challenge show *Reach for the Top* with original host Colin MacLean.

COLLECTION SELECTION

Collection Selection invites community leaders to select their favourite artwork from the EAG's collection. 2004 participants included: former Minister of Alberta Community Development, Gene Zwozdesky; former Mayor Bill Smith; Honourable Tommy Banks, from The Senate of Canada; Paula Simons, Edmonton Journal's City Columnist; and Laurie Blakeman, MLA – Edmonton Centre.



Senator Banks in the EAG vault with his selection: *School Days* by Franklin Brownell

Saturday Art Classes

Art classes for children and youth saw excellent support in 2004. Families and artists of all ages (children ages 4-12 & youth 13+) participated in studio programs including: drawing, sculpture, painting, cartooning, printmaking and mixed media. Animé Illustration returned as a new class initiative to strong support and continued interest. *Saturday Art Classes* took place over six week intervals throughout the school year while current exhibitions pro-vided inspiration and stimulation.

In 2004 the Gallery hosted approximately 300 creative young participants.

Summer and Spring Break Camps and Classes

Outstanding studio themes such as: drawing, sculpture, painting, cartooning, animation, youth drop-in and mixed media continued to draw young artists to the *EAG Spring Break and Summer Studio Programs*. Current exhibitions motivated and maintained *Spring Break Camps & Classes* for the week of March 29 – April 2.

Summer Camps and Classes had variations in length from three to four days in duration and offered topics such as drawing, sculpture, painting and cartooning. Offsite visits for themed *Camps* included the ever popular *Horse Camp* as well as the new *Zoo Camp*. This initiative established an art educational partnership with The Valley Zoo Development Society and engaged young learners to combine visual art techniques with zoological learning and observation.

In 2004 the Gallery hosted approximately 500 *Spring Break and Summer Camps & Classes* participants.

Sponsors included: Summer Career Placement, Alberta Human Resources; STEP and Summer Work/Student Exchange, Valley Zoo Development Society

EAG Mondays

From June through to August, the EAG provided economical, hands-on, art educational activities for children and families.

In 2004 *The Loonie Tent Laboratory* underwent an onsite format change. This was wholly influenced by the renovations taking place in Sir Winston Churchill Square during the summer months.

EAG Mondays continued in *The Loonie Tent Laboratory* tradition by bringing art and art activities to a casual public forum. The greatest difference in program content was the inclusion of an EAG tour component of current exhibitions. This brought children and their adults into the EAG to experience current exhibitions which then linked directly to a hands-on project.

As always, we were neighbors to Edmonton's summer festivals: The Works Festival - Edmonton's festival for the visual arts and The Edmonton Folk Music Festival where we annually participate in the Family Area. In 2004 *EAG Mondays* and *The Loonie Tent* and attracted over 1800 participants.

Sponsors included: Summer Career Placement, Alberta Human Resources; STEP, Summer Work/Student Exchange, The Edmonton Folk Music Festival.

Adult Drop-In Art Classes and Workshops

EAG continued to expand *Adult Studio Programs* with the addition of Tuesday evening classes, Adult Drop-In Drawing that ran simultaneously to the ever popular Thursday evening Drop In Art Classes. For the first time ever, Drop-In Thursdays were programmed into the summer month with great support!

In 2004, the Gallery hosted over 70 evenings of Drop-In Classes and 6 Adult Studio Workshops with nearly 1000 participants for the year!

Art Express

Art Express is a hands-on class designed for adults with developmental challenges that follows an expressive approach to painting, sculpture, drawing, printmaking and mixed media art. Class projects were inspired by current exhibitions and conceptually rooted in unadulterated personal creativity. Class sessions took place in seven week intervals throughout the year.

In 2004 Art Express hosted approximately 150 participants.

Art Express Sponsor: ECALA

Art Out There: Artists and Youth in the Community

During the early months of 2004, the Gallery continued the artist residency program, titled *Art Out There: Artists and Youth in the Community*. As part of an ongoing commitment to connect to youth in meaningful ways, the EAG Education and Curatorial department revitalized this initiative with multiple artist placements and has built strong partnerships with public school teachers and Edmonton youth agencies.

Thanks go out to our residency artist Spyder Yardley-Jones. Special thanks to our host schools Strathcona Composite High School and Mary Hanley Elementary School.

Art Out There Sponsor: RBC Foundation

School Tours and Studios

School tours are designed to challenge students intellectually and creatively. They combine the imaginative and critical examination of works of art with a creative exploration of ideas, techniques and materials in complementary studio projects. The overall aim of both school tours and guided adult tours is to facilitate viewers' engagement with works of art, allowing visitors to explore the impact art has on their own lives.

In 2004 there were significant increases in the number of tours, the number of school students and adults participating in guided tours, and the amount of revenue generated for the gallery through these programs. In 2003 there were 218 guided tours whereas in 2004 this increased to 230 tours. A total of 6,355 school students and adults participated in guided tours in 2003 while this number increased to 6,732 participants in 2004. Finally, in 2003 a total of \$33,766.00 was generated for the gallery by the school tour program whereas in 2004 the amount of revenue generated increased to \$40,788.15.

School Tours and Studios Program Sponsor:
Imperial Oil Foundation

Events 2004

80 YEARS STRONG

We are pleased to reflect upon the EAG's 80th Anniversary Gala dinner held at The Fairmont Hotel Macdonald, Friday October 22, 2004.

The success of this landmark event was due to the hard work and commitment of sponsors, partners and friends. Congratulations to the 80th Anniversary volunteer organizing committee guided by Chairperson, Peter Graham. Along with Noella Graham, Katherine Huising, Stuart Weatherill and Jack Mulkins, over 200 patrons were delighted by inspired taste sensations in a champagne reception and five-course, designer, black tie dinner.

Works of art were donated by Giuseppe Albi, Lynn Malin, Lyndal Osborne, Jason Muirhead and the Agnes Bugera Gallery to name a few. We are especially grateful to renowned Alberta sculptor Alan Reynolds. Reynold's leadership as an artist and community builder was evidenced through his substantial donation to the Gala. The 21 tables were graced by sculptural forms forged by the artist and added unique personality to each table. At the close of the evening a lucky winner from each table went away with a gorgeous new work of art.

Happy 80th Anniversary Edmonton Art Gallery!

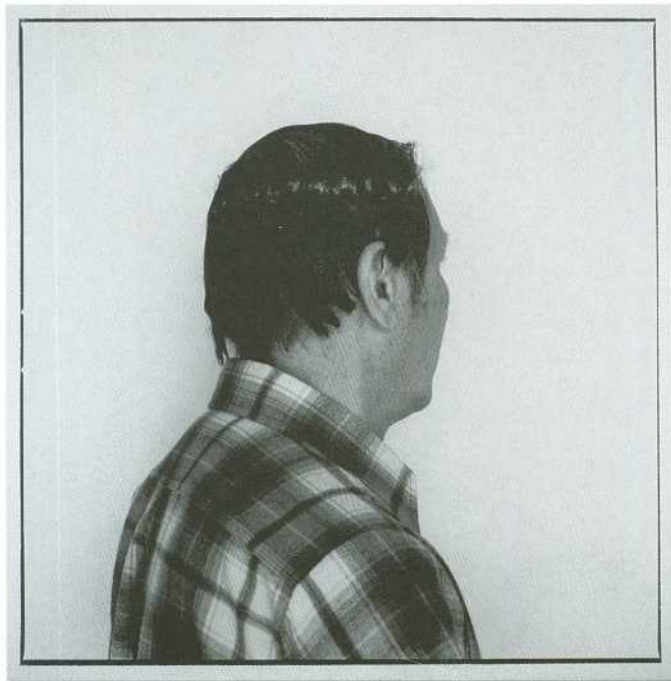
Art on the Block

On the evening of Thursday May 6, 2004, The Edmonton Art Gallery held the 6th annual Art on the Block live and silent auction. This evening of entertainment, networking and fundraising is one of our most anticipated events of the season. It is a "can't miss" occasion for seasoned collectors and for those beginning to build their personal or business collection.

Maggie Mitchell, Chair of the steering committee for Art on the Block, did a spectacular job in creating a lively evening for sponsors, patrons and guests who attended and showed tremendous support for The Edmonton Art Gallery.

The Honorable Gene Zwozdesky, Minister of Community Development played a very special role as auctioneer in the Gallery's major annual fundraiser. With his assistance the gallery raised a net profit of \$97,583.

All proceeds contribute to The Edmonton Art Gallery's nationally recognized exhibitions and educational programs.



Arnaud Maggs
Canadian, b. 1927
Untitled (portrait of
Orest Semchishen), 1982
Silver gelatin print on paper.
Gift of Orest Semchishen

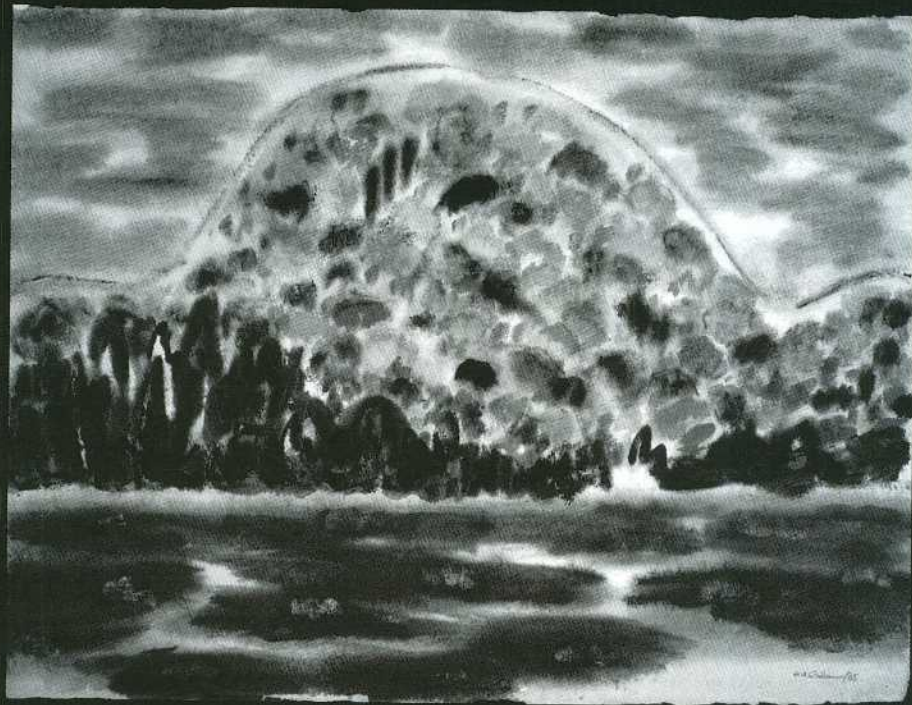


The Art Rental and Sales Gallery

2004 was a year of change for the Art Rental and Sales Gallery. Last June our staff managed the relocation of the gallery into a renovated space on the main level of The Edmonton Art Gallery. Even with the challenge of the move, the Art Rental and Sales Gallery earned its highest net revenue and placed the highest number of artworks into the Edmonton area to date. Continuing creative management of our business will ensure that the Art Rental and Sales Gallery will grow with our city and The Edmonton Art Gallery proper. The combination of increased attendance to the EAG and the relocation appears to have benefited Art Rental, however, 2005 will present a clearer picture and we continue to track the effects of the change.

Although profitability is a measure of success, the value of the Art Rental and Sales Gallery exists within a network of positive relationships with the greater art community and bridge building between the general public and contemporary artistic practices. Finally, it is the hard-working and enthusiastic team of the Art Rental and Sales Gallery that is its heart and soul. I, Heather Hamel, want to extend my thanks to Kim Bouwmeester, Eric Uhlich, Tiffany Shaw-Fearon and Tamara Larter.

K.M. Graham
Smoke Lake, Bright October Day, 1985
Acrylic on paper
Gift of Monty J. Cooper



Acquisitions 2004

2004.1.2

Mark Arneson

Canadian, b. 1953

Untitled, 1988

Ektacolor print on paper

The Edmonton Art Gallery Collection,

gift of Orest Semchishen

2004.1.1

Mark Arneson

Canadian, b. 1953

Untitled, 1981

Ektacolor print on paper

The Edmonton Art Gallery Collection, gift of Orest

Semchishen

2004.9

Maxwell Bennett Bates

Canadian, 1906-1980

Still Life, 1965

Oil on canvas

The Edmonton Art Gallery Collection, purchased with

funds from the Dr. Max and Mrs. Iris Stern Endowment

Fund

2004.6

Maxwell Bennett Bates

Canadian, 1906-1980

Untitled (Still Life With Lamp), 1951

Oil on canvas

The Edmonton Art Gallery Collection, purchased with

funds from the Dr. Max and Mrs. Iris Stern Endowment

Fund

2004.8.1

Guy Bourassa

Canadian, b. 1956

Descriptions de descriptions, 1989

Steel, halogen lights, transformer, steel wire

The Edmonton Art Gallery Collection, gift from the

Canada Council Art Bank

2004.8.2

Roland Brener

South African, b.1942

The Master, 1987

Steel, light bulbs, mirror, particle board, plastic

The Edmonton Art Gallery Collection,

gift of the Canada Council Art Bank

2004.14.3

Blair Brennan

Canadian, b. 1959

Alchemical Drawing (23/05/91), 1991

Ink, gold powdered pigment, charcoal on paper

The Edmonton Art Gallery Collection,

gift of the artist in memory of Helen Folkmann

2004.14.2

Blair Brennan

Canadian, b. 1959

Alchemical Drawing (25/05/91), 1991

Ink, gold powdered pigment on paper

The Edmonton Art Gallery Collection,

gift of the artist in memory of Helen Folkmann

2004.14.1

Blair Brennan

Canadian, b. 1959

Alchemical Drawing (09/06/91), 1991

Acrylic, wax, ink, gouache on paper

The Edmonton Art Gallery Collection,

gift of the artist in memory of Helen Folkmann

2004.7

Sean Caulfield

Canadian, American, b. 1966

Dripping Object, 2000

Acrylic on paper on linen

The Edmonton Art Gallery Collection,

purchased with funds from the Cheryl M. Sutton

Endowment Fund

2004.1.3

Douglas Clark

Canadian, 1952-1999

Jewelry Store, Chilliwack, 1981

Ektacolor print on paper

The Edmonton Art Gallery Collection,

gift of Orest Semchishen

2004.5.5

Marlene Creates

Canadian, b. 1952

Mill Creek, Edmonton (from the series Crossing

Prairie Watercourses), 2001

Duratrans photograph on plexiglass with

light fixtures, wiring

The Edmonton Art Gallery Collection,

purchased with funds from the Canada Council

Acquisition Assistance Grant, and funds

from the Soper Endowment

2004.5.4

Marlene Creates

Canadian, b. 1952

Horsehills Creek, Edmonton (from the series *Crossing Prairie Watercourses*), 2001
Duratrans photograph on plexiglass with light fixtures, wiring
The Edmonton Art Gallery Collection,
purchased with funds from the Canada Council
Acquisition Assistance Grant, and funds
from the Soper Endowment

2004.5.3

Marlene Creates

Canadian, b. 1952

Whitemud Creek, Edmonton (from the series *Crossing Prairie Watercourses*), 2001
Duratrans photograph on plexiglass with light fixtures, wiring
The Edmonton Art Gallery Collection,
gift of Marlene Creates

2004.5.2

Marlene Creates

Canadian, b. 1952

North Saskatchewan River, Edmonton (from the series *Crossing Prairie Watercourses*), 2001
Duratrans photograph on plexiglass with light fixtures, wiring
The Edmonton Art Gallery Collection,
gift of Marlene Creates

2004.5.1

Marlene Creates

Canadian, b. 1952

Blackmud Creek, Edmonton (from the series *Crossing Prairie Watercourses*), 2001
Duratrans photograph on plexiglass with light fixtures, wiring
The Edmonton Art Gallery Collection,
gift of Marlene Creates

2004.3

Clay Ellis

Canadian, b. 1955

Buttercup, 2000
Acrylic polyurethane
The Edmonton Art Gallery Collection,
gift of the artist

2003.12.3

Paul Fournier

Canadian, b. 1939

Sea Cave, 1985
Watercolour on paper
The Edmonton Art Gallery Collection,
gift of Monty J. Cooper

2003.13.5

Ted Godwin

Canadian, b. 1933

Miz Beaver's Cafeteria & Mr. Brook Trout's Playground #6, 1980
Oil on canvas
The Edmonton Art Gallery Collection,
gift of Imperial Oil Limited

2003.13.4

Ted Godwin

Canadian, b. 1933

Miz Beaver's Cafeteria & Mr. Brook Trout's Playground #5, 1980
Oil on canvas
The Edmonton Art Gallery Collection,
gift of Imperial Oil Limited

2003.13.3

Ted Godwin

Canadian, b. 1933

Miz Beaver's Cafeteria & Mr. Brook Trout's Playground #4, 1980
Oil on canvas
The Edmonton Art Gallery Collection,
gift of Imperial Oil Limited

2003.13.2

Ted Godwin

Canadian, b. 1933

Miz Beaver's Cafeteria & Mr. Brook Trout's Playground #3, 1980
Oil on canvas
The Edmonton Art Gallery Collection,
gift of Imperial Oil Limited

2003.13.1

Ted Godwin

Canadian, b. 1933

Miz Beaver's Cafeteria & Mr. Brook Trout's Playground #2, 1980
Oil on canvas
The Edmonton Art Gallery Collection,
gift of Imperial Oil Limited

2004.10

Ishbel Maria Marjoribanks Gordon,

Marchioness of Aberdeen

British, 1857-1939

Edmonton from South Edmonton, October 13th, 1894
Watercolour on paper
The Edmonton Art Gallery Collection,
purchased with funds from the Dr. Max and
Mrs. Iris Stern Endowment Fund

2003.12.2

K.M. Graham

Canadian, b. 1913

At Long Beach, 1988

Acrylic on paper

The Edmonton Art Gallery Collection,
gift of Monty J. Cooper

2003.12.1

K.M. Graham

Canadian, b. 1913

Smoke Lake, Bright October Day, 1985

Acrylic on paper

The Edmonton Art Gallery Collection,
gift of Monty J. Cooper

2004.2

Geoffrey Hunter

Canadian, b. 1960

Vision/Salé, 2001

Oil on canvas

The Edmonton Art Gallery Collection,
gift of the artist in memory of Helen C. West

2004.11

Frederick M. Kitchener

Canadian, 1864-1929

North Saskatchewan River, c. 1922-25

Watercolour on paper

The Edmonton Art Gallery Collection,
purchased with funds from the Dr. Max and
Mrs. Iris Stern Endowment Fund

2004.4.2

Allan Harding MacKay

Canadian, b. 1944

Carla, 1998

Charcoal, oil wash on paper

The Edmonton Art Gallery Collection,
gift of the artist

2004.4.1

Allan Harding MacKay

Canadian, b. 1944

Karrie, 1999

Charcoal, oil wash on paper

The Edmonton Art Gallery Collection,
gift of the artist

2004.1.4

Arnaud Maggs

Canadian, b. 1927

Untitled (portrait of Orest Semchishen), 1982

Silver gelatin print on paper

The Edmonton Art Gallery Collection,
gift of Orest Semchishen

2004.8.3

Walter May

Canadian, b. 1950

Archenemy, 1987

Lava rock, steel pipe, copper tubing with copper
sulphate patina

The Edmonton Art Gallery Collection,
gift of the Canada Council Art Bank

2004.8.4

Al McWilliams

Canadian, b. 1944

Suspended / Animation, 1981

Masonite, plywood, light bulb, pigskin

The Edmonton Art Gallery Collection,
gift of the Canada Council Art Bank

2004.8.5

Claude Mongrain

Canadian, b. 1948

Paysage avec des Pièces en Trop, 1985

Steel, concrete, wood, black granite

The Edmonton Art Gallery Collection,
gift of the Canada Council Art Bank

2004.13

Llewellyn Petley-Jones

Canadian, 1908-1986

South Edmonton, c. 1931

Watercolour on paper

The Edmonton Art Gallery Collection,
purchased with funds from the Dr. Max and
Mrs. Iris Stern Endowment Fund

2004.12

Llewellyn Petley-Jones

Canadian, 1908-1986

Impressions of a Rugby Match, October 1, 1932, 1932

Watercolour on paper

The Edmonton Art Gallery Collection,
purchased with funds from the Dr. Max and
Mrs. Iris Stern Endowment Fund

2003.11

Judith Schwarz

Canadian, b. 1944

Gridlock, 1998

Flame cut steel

The Edmonton Art Gallery Collection,
gift of the artist

Allen Harding, MacKay
Carla, 1998
Charcoal, oil wash on paper
Gift of the artist



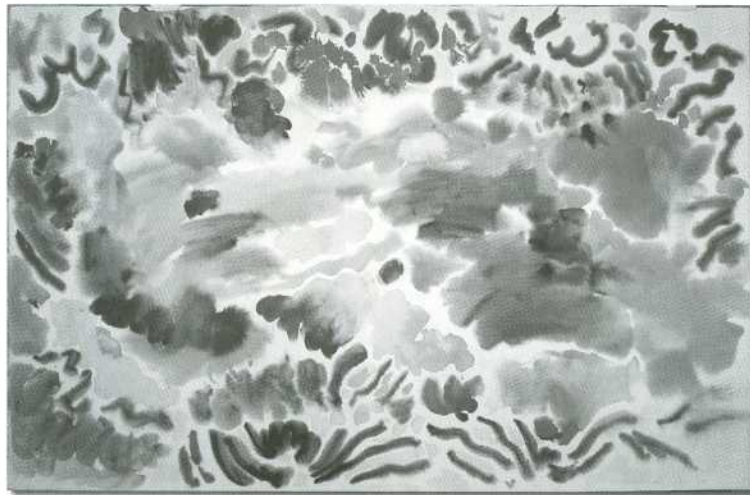
Community Support 2004

The Edmonton Art Gallery is Alberta's premier not-for-profit art museum where support from the community is vital to our continued successes. The generosity of our many sponsors, donors and members help us to achieve our mission of excellent and innovative practice in programming, stewardship, and presentation of visual arts in Western Canada and across the nation.

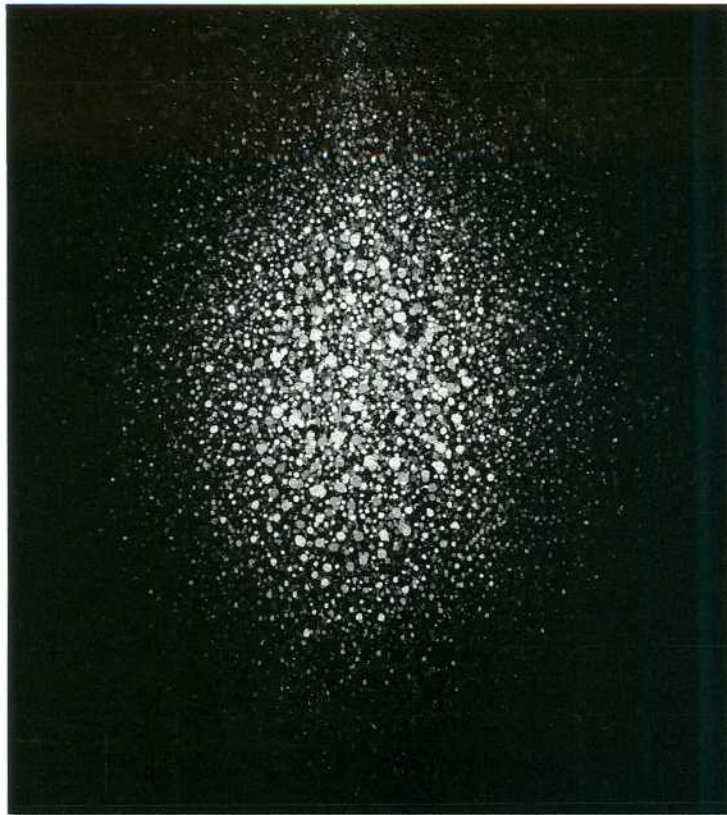
Strong partnerships with ongoing corporate sponsors like RBC Foundation, Imperial Oil Foundation and AIM Trimark help to support the Gallery in making art and visual culture an exciting and rewarding experience for a broad public audience within our growing knowledge-based society. The Gallery is very pleased to welcome our new corporate sponsors that also play a significant role in supporting the Gallery's mission: Fraser Milner Casgrain LLP and WestJet.

Individual and corporate donors showcase that philanthropy is a time honoured tradition of giving and sharing that is primary to the quality of life within our communities. Our growing Member base is a further testament to Edmonton as a city that takes pride in the arts.

The Edmonton Art Gallery thanks each and every one of you who have helped contribute to another rewarding year.



Paul Fournier
Sea Cave, 1985
Watercolour on paper
Gift of Monty J. Cooper



Geoffrey Hunter
Vision/Salé, 2001
Oil on canvas
Gift of the artist
in memory of
Helen C. West

Sponsors 2004

Exhibition, Program and Event Sponsors

AIM Trimark
The Artworks
Ashton Cole Communication Arts
Calibrium International
Capital Colour Press Ltd.
Carlson Projects North
Criterion Research Corporation
The Dish & The Runaway Spoon
Don Wheaton Chevrolet Oldsmobile
The Edmonton Journal
Erickson Infiniti Nissan
The Fairmont Hotel Macdonald
Franklin Templeton Investments
Fraser Milner Casgrain LLP

Hallmark Canada
Imperial Oil Foundation
McBain Camera
Maclab Enterprises
Northlands Park
NUVO Magazine
PCL Construction Group Inc.
RBC Foundation
Trail Appliance
The Sutton Place Hotel
Weber Motors
The Westin Edmonton
WestJet:
The Official Airline of The Edmonton Art Gallery

Grants and Foundations

The Alberta Foundation for the Arts,
an Alberta Lottery Fund Beneficiary
The Canada Council for the Arts
The City of Edmonton
The Edmonton Community Foundation,
designated monies from the John and
Barbara Poole Family Fund
Edmonton Community Lottery Fund
Museum Assistance Program of the
Department of Canadian Heritage

Corporate Partners

Donations received from
January 1, 2004 –
December 31, 2004

Leaders

\$5,000 plus
Hollander York Gallery Ltd.
Imperial Oil Ltd.

Partners

\$3,001 - \$5,000

Associates

\$1,500 - \$3,000
Douglas Udell Gallery
Edmonton Regional
Airports Authority

Benefactors

\$1,000 - \$1,499
Bearclaw Gallery
Maclab Enterprises Ltd.
Masters Gallery Ltd.

Patrons

\$500 - \$999
All Weather Windows Ltd.
Arndt Tkalic Architecture
Associated Engineering Group Ltd.
Carlson Projects North Ltd.
Margaret Kool Marketing
Melcor Developments Ltd.
Sorrell Financial
West End Gallery

Sustainers

\$250 - \$499
A.D. Williams
Engineering Inc.
The Focus Corporation
The Hot Pot Studio
Princeton Developments Ltd.

Scott Gallery
Springwood Management

Supporters \$100 - \$249

Avison Young
Banister Research & Consulting Inc.
Brian Webb
College of Physicians & Surgeons
Italian Centre Shop Ltd.
Kodiak Wireline Services Ltd.
Maclab Enterprises
The Manor Café
Petrin Mechanical
Rigoletto's Café
Second Cup
Sobey's West
Wade Engineering
Westgate Chevrolet Ltd.
Zenari's

Individual Sponsors

Donations received from
January 1, 2004 –
December 31, 2004

Curator's Circle \$1,000 plus

S.E. Abernethy
Rick & Shannon Arndt
Bill & Mary Arnold
Harold Banister
Mark Bellows
& Mandy Lindsay-Bellows
Tracy & Tim Bertsch
Norm & Christine Bishop
Mary E. Bromley
Edward Burtynsky
Sharon Busby &
Jean-Pierre Fournier
Don & Mary Collinson
Phil Darrah
Gerry & Cheryl Davies
James Davies
Marc & Stacy de La Bruyère
Lorenzo Dupuis
Glyn & Allison Edwards
Sheila & Jim Edwards
Terry Fenton
Lois A. Field
Mr. & Mrs. J.A. Forbes
John Freeman
Roger & Peggy Gouin
Noella & Peter Graham
Douglas Haynes

Geoffery Hunter
Edward Stidworthy Johnson
David Judge
Margaret Kool
Dr. & Mrs. W.H. Lakey
Audrey Luft
Dorothea Macdonnell
Ken Macklin
Lynn Malin
Darci & Mel Mallon
Doug McConnell
& Claire Desrochers
Eva McGregor
Phil Milroy & Jane Russell
John & Maggie Mitchell
Joanne Moffat
John Moquin
Jack Mulkins
Ron & Lynn Odynski
Tom O'Flanagan
Allan & Frances Olson
Esther S. Ondrack
Mr. & Mrs. Sandy Pearson
Barbara & John Poole
Dr. & Mrs. J.L. Reddington
Ralph Reichenbach
Jim & Vivian Redmond
Alan Reynolds
& Ellen Thomson
Judith Schwarz
Allan & Marianne Scott
Richard & Carol Selfridge
Orest & Eileen Semchishen
Shawn Serfas
Robert Sinclair
Monica Tap
Denny & Donna Thomas
Joe & Helen Tkalic
Dr. & Mrs. R.C. von Borstel
Peter von Tiesenhausen
Wendy Wacko
Ron & Sheila Weatherill
Bill & Betty Lou Weir
Kim & Don Wheaton
Bev Wittmack & Robert Bear
Linda M. Youell

Patrons

\$500 - \$999
Barry R. Aldred
David & Susan Angus
Ron & Marianne Brown
Catherine Burgess
Sharon Busby
Sean Caulfield
Taiga Chiba

Dean Drever
Robert J. Dunlop
Gerald Faulder
Graham Fowler
Paul Freeman
Tom Gale
Carole Harmon
John Hartman
Jerry Heine
Mr. & Mrs. J.T. Henderson
Kathryn Hines
Anna House
M.N. Hutchinson
Eleanor Lazare
Carol Ljuden
Amy Loewan
Marika Luppino
Malcolm Mayes
Royden Mills
Lisa Murray
John Morel
Gabor Nagy
Robert Nichols
John Noestheden
Terry O'Flanagan
Marc C. Siegner
Marlene & David Stratton
Ernestine Tahdel

Sustainers

\$250 - \$499

Anonymous (2)
Neen Ahluwalia
Allen Ball
Elizabeth Beauchamp
Nick Dobson
Charlotte Edgar
Dennis & Doreen Erker
Christopher Hayman
Judy & Glen Heximer
Mr. & Mrs. J.E. Hokanson
Bill & Valerie Hole
Tomoya Ihaya
Kathryn Kern
Sylvia Martin & Doug Carlyle
Michael Morris
Daryl Rydman
Dr. Gordon Searles
Rod Wacowich
& Lorraine Neill
Stuart J. Weatherill
& Francine Roy
Pam Wilman
Margaret Witschl
& Harry Vandervelde

Supporters

\$100 - \$249

Anonymous (1)
Justice John A. & Ruth Agrios
Bruce Allen
Jane & Mac Alton
Karen & Richard Anderson
Richard & Georgia Baird
Alan & Alice Bell
Barbara Blackley
Julia Boberg
Marjorie Bower
Joyce & Herbert Buchwald
Doris Campbell
J.E. Chalifoux
Ross & Muriel Cheriton
Peter & Anninna Chiu
Nora Corbett
Dr. David R. Cornish
Dr. Bruce P. Dancik
Jim A. Dow
David Fujiwara
Paul & Evelyn Gorham
Sheila Greckol
Dr. & Mrs. T. Hayashi
Raymond & Barbara Howard
Margaret L. Job
Barry Johns
Joan Kern
Chris Klein
Gary Kriviak & Kathryn
Kriviak-Hawkesworth
Patricia Ann Laing
Donna & Gerard Lemieux
Dr. & Mrs. Levin
Nancy Lewis
Nancy Lord
Mr. & Mrs. C.N. Lund
Evangeline MacDonald
Dave and Barbara MacLaren
John & Peggy Marko
Harwood McCuaig
Hugh McPhail
& Yolanda van Wachem
Dr. Malcolm S. McPhee
Pam Miles
Arliss Miller
Louise R. Nelson
John Oberg
Frances T. Olson
Mary & Fred Paranchych
Kim Pawluk & San Chan
Ron & Betty Anne Pearson
Dick & Leona Peter
W. Gordon Plewes
Jeff & Jackie Polovick

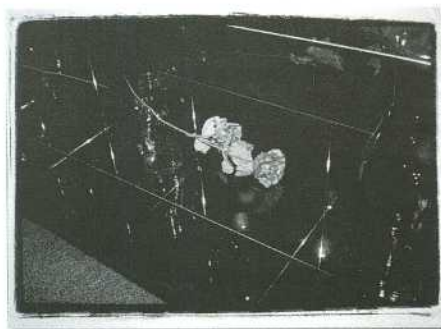
Sharon Ritter
Christopher & Dianne Robinson
Vera H. Rourke
Marc & Andrea Roy
Werner B. Schulze, M.D.
Perry & Sandra Segal
Andrew & Marilyn Seidel
Kayla Shoctor
Dr. John Snow Senior
Brian & Marnie Sproule
Daniel & Beverly Stachnik
Hans & Doris Studer
Ellen E. Thomson
Ed & Isabelle Verdin
Buddy Victor
Deidre Walton
Allan & Jean Warrack
Mr. & Mrs. Bernard Wood
Lorraine Woollard
Annabelle Wright
Dr. Mary Yakymchko
Robert & Barbara Youngs
Darryl Zoerb & Greg Ambrosi

Volunteers 2004

Volunteers are essential to the Gallery as they not only provide the hands-on help to make events run smoothly, but they are often the face the Gallery presents to our community as they greet and guide visitors.

In 2004 more than 140 volunteers contributed over 3,800 hours of their time by supporting programs, events and fundraising at The Edmonton Art Gallery. In return for their tremendous support, the Gallery provided ongoing opportunities to gain insight into visual art through tours, unique events and scheduled lectures.

The following people have been integral to the Gallery's success in 2004. We are grateful for their help.



Douglas Clark
Jewelry Store, Chilliwack, 1981
Ektacolor print on paper
Gift of Orest Semchishen

Christine Airhart
Alexander Affleck
Anna Aloy
Peter Andersen
Sean Andrews
G. Beauchamp
Vicky Beauchamp
Alexis Berezan
Dawn Blue
Andriana Bohonos
Kim Bouwmeester
Nicole Braseth
Chrystal Cherniwchan
Levi Collinge
Greg Doherty
Stephanie Enders
Patty Faulder
Laura Freeman
Lucy Frost

Suzan Gable
Isabelle Gallant
Walter Goetz
Herman Goigner
Doreen Gratton
Corey Hamilton
Robert Harpin
Leah Henderson
Chad Irwin
Vanessa Jackson
Shivani Jaipaul
Anita Jenzena
Miranda Jimmy
Munira Karimjee
Diana Kardel
Jocelyn Kaup
Marlene Kaup
Walter Kehl
Leanne Kembel

Gillian Kursa
Colleen Klapstein
Maggie Laing
Ron Lam
Karen Lee
Sarah Lee
Stephanie Lee
Dave Lehoux
Sarah Leib
Holly Lovatt
Amanda McCrae
Yoko Masagaki
Cesar Marquez
Patti Matty
Selena McDougall
Dianne McGill
Melissa Milakovic
Mitch Miller
Elaine Minor
Noma Morrissey
Stacey Mullings
Louise Nelson
Suzanne Ngo
Eva Nolan
Erin Osinchuk
Josée Ouellette
Jennifer Pascoe
Erin Paul
Geraldine Pauluk
Audrey Paranuik
Cathy Perraton
Julie Phillips
Sandra Poczobut
Sherry Quigley
Luciana Sacchi
Alison Salmon
Mara Skribis
Kirsten Snell

Laverne Snoek
Ruby So
Barbara Sowak
Tracey Stals
Kelly Stevenson
Alex Sutherland
Carsen Swan
Riva Symko
Tom Tam
Carole Taylor
Laurie Taylor
Amy Tong
Mary Tong
Kathy Tough
Nghia Truong
Arden Tse
Caroline van Dijk
Nina von Innerebner
Michael Weins
Joan Whitfield
Dianne Willett
Tanya Wold
Maddie Wong
Gene Yuzda

Board and Staff 2004

Officers

Allan Scott, Chair
Gerry Davies, Human Resource Officer
Rob Dunlop, Financial Officer
Margaret Kool, Officer
W.Gordon Plewes, Corporate Secretary
Lloyd Reddington, Program Officer

Directors

Angela Adsit
David Angus
David Aplin (from April)
Rick Arndt (to April)
Tracy Bertsch
Sharon Busby
Gordon Gilroy (to April)
Ron Hunt (from April)
George Irwin
Frank Johnson (from September)
Darci Mallon
Maggie Mitchell
Stuart Weatherill
Reagan Williams (from April)

Honorary Appointments

Lt. Governor Lois Hole, Honorary Patron
Premier Ralph Klein, Honorary Chairman
Mayor Bill Smith, Honorary President (to October)
Mayor Stephen Mandel, Honorary President (from October)

Staff

Executive Director
Tony Luppino

Curatorial

Catherine Crowston, Chief Curator and
Director of Exhibitions and Programs
Marna Bunnell, Curatorial Assistant (from September),
(Acting Exhibitions and Programs Manager
(from May to August)
Pam Clark, Assistant Registrar/Visual
Resources Coordinator
Fiona Connell, Travelling Exhibitions Coordinator
Bruce Dunbar, Registrar
Shane Golby, School Programs Coordinator
Brent Irving, Preparator
Duncan Johnson, Travelling Exhibitions Preparator
Lisa Quirion, Curatorial Assistant (to August)
Nicole Reeves, Studio Programs Coordinator
Natalie Roy, Public Programs and Outreach Manager
Clint Wilson, Preparator

Resource Development

Vince Gasparri, Special Projects Coordinator
Richele McGill, Development Assistant (to May),
Development (since June)
Patti McIntosh, Director of Resource Development
(to January)
Adrienne Mitchell, Publicity & Promotions Coordinator
Linda Pognant, Sponsorship & Development Manager
(since October)
Claire Sutton, Development Officer (to May)

Administration

Ron Gregg, Director of Administration
Ron Clough, Security Supervisor
Angelene Gramatovich, Information Desk Coordinator
(to March)
Barry Reed, Administrative Assistant, Accounting
Brian Storonianski, Accountant
Joan Thomas, Administrative Assistant to
Executive Director
Judie Belland, Information Desk Coordinator
(from February)

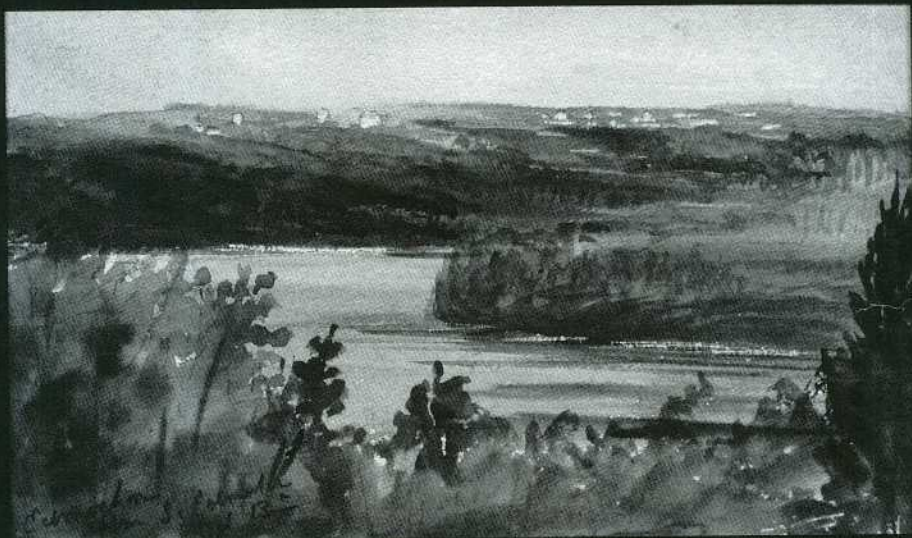
Gallery Shop

Luke Orsini, Gallery Shop Manager (to April)
Kelly Yoon, Gallery Shop Assistant Manager (to April),
Gallery Shop Manager (from May)
Sue Nielsen, Gallery Shop Associate (to April), Gallery
Shop Assistant Manager (from May)
Yumey Cuan, Gallery Shop Associate
Ann Gariano, Gallery Shop Assistant (from October)

Art Rental and Sales Gallery

Heather Hamel, Art Rental and Sales Manager
Kim Bouwmeester, Art Rental and Sales Assistant
Eric Uhlich, Gallery Assistant (to August)
Tiffany Fearon, Gallery Assistant (to August)
Tamara Larter, Gallery Assistant (from September)

Ishbel Maria Marjoribanks Gordon,
Marchioness of Aberdeen
Edmonton from South Edmonton, October 13th, 1894
Watercolour on paper
Purchased with funds from the Dr. Max and
Mrs. Iris Stern Endowment Fund



THE
EDMONTON **ART** GALLERY

2 Sir Winston Churchill Square
Edmonton, Alberta T5J 2C1

Tel: 780 422 6223

Fax: 780 426 3105

www.edmontonartgallery.com