

ROUTE ? How to Read a Schedule

All route brochures have a bus schedule and a map. Timing points are read in columns and rows. To find the estimated times that a bus stops at a particular location, read down the column under the location. To find the estimated times that a particular bus will stop at other locations, read across the row (left to right). Reading across the row tells you the time required for the bus to travel between timing points. For example, to be at Capilano TC for 8:22 a.m. you must board the bus at 100 St & 104 Ave at 7:55 a.m.

Route Number The bold line indicates when the routes starts a return trip.

ROUTE 85				SATURDAY		
Downtown to Capilano				Capilano to Downtown		
100 St 104 Av	83 St 90 Av	79 St 90 Av	Capilano TC	Capilano TC	79 St 90 Av	100 St 104 Av
(A) →	(B) →	(C) →	(E)	(E) →	(C) →	(A)
7:55	8:11	8:13	8:22	8:27	8:36	8:53
8:55	9:11	9:13	9:22	9:27	9:36	9:53
9:55	10:11	10:13	10:22	10:27	10:36	10:53
10:55	11:11	11:13	11:22	11:27	11:36	11:53
11:55	12:11	12:13	12:22	12:27	12:36	12:53
12:55	1:11	1:13	1:22	1:27	1:36	1:53
1:55	2:11	2:13	2:22	2:27	2:36	2:53
2:55	3:11	3:13	3:22	3:27	3:36	3:53
3:55	4:11	4:13	4:22	4:27	4:36	4:53
4:55	5:11	5:13	5:22	5:27	5:36	5:53
5:55	6:11	6:13	6:22			

Day of week schedule operates.

Timing points are select bus stops along the route that correspond to times listed under each location. The letter in the circles can be found on the route map to pinpoint the location.

Read down the column to find the time your bus leaves your location.

Read across the row to find the time your bus arrives at the next timing point.

Bold text represents P.M. time.

For more information visit takeETS.com or call 311 to speak with an agent.

ETS INFORMATION

ETS Real-Time

Track your bus anywhere anytime from your phone or computer using these recommended real-time tools:



ETS Text & Ride 31100

Text the bus stop number to 31100 or bus stop # [space] bus route # to receive your bus schedule by text message.

ETS BusLink 780-496-1600

Get automated transit information by phone 24/7.

Customer Service

For assistance with transit-related questions, call 311 to speak with an agent 24/7 or email 311@edmonton.ca. If calling from outside Edmonton, dial 780-442-5311. For Lost & Found call 780-496-1622 and leave a message.

Transit Watch 780-442-4900

Report unsafe behavior, suspicious activity or packages to uniformed ETS staff or call Transit Watch.

TTY 780-944-5555

Telephone service for people with decreased hearing and/or speech abilities.



All ETS routes are accessible and all buses are equipped with bike racks except for community and regional buses.

ROUTE 399

Sept to
April Only

Coliseum
Concordia College

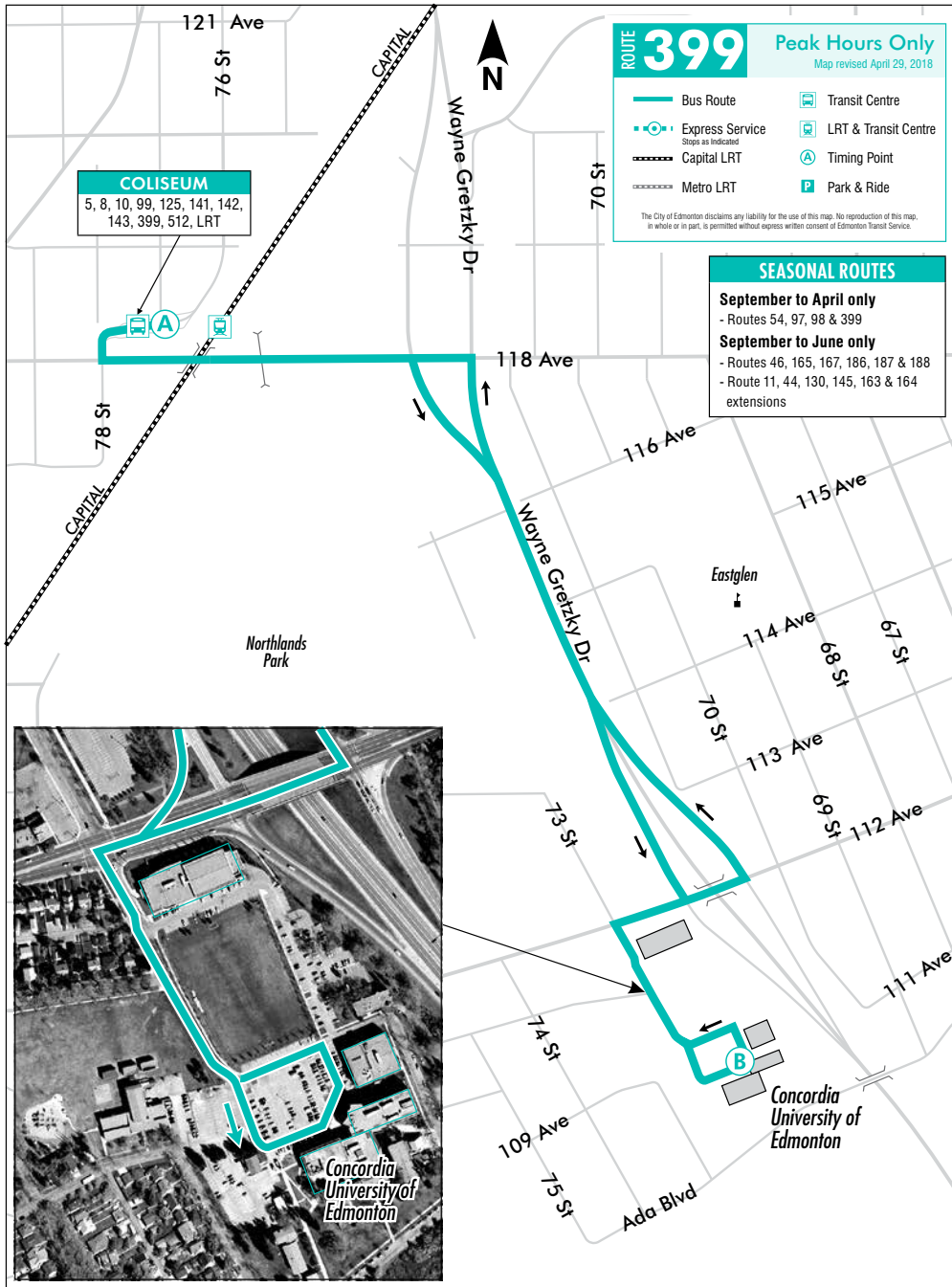
REVISED SEPTEMBER 1, 2013



ETS

takeETS.com

ETS



ROUTE 399		MONDAY TO FRIDAY									
Coliseum to Concordia to Coliseum											
Coliseum TC	Hole Academic Centre	Coliseum TC									
A	B	A									
7:29	7:38	7:46	C								
7:49	7:58	8:06	C								
8:09	8:18	8:26	C								
8:29	8:38	8:46	C								
8:49	8:58	9:06	C								
9:09	9:18		C								
	3:29	3:38	C								
3:41	3:49	3:58	C								
4:01	4:09	4:18	C								
4:21	4:29	4:38	C								
4:41	4:49	4:58	C								
5:01	5:09	5:18	C								
5:21	5:29	5:38	C								

Bold Text represents P.M. time TC = Transit Centre C=Community Bus Subject to change without notice