

- BUILDING FOOTPRINT - 365 SQ. METERS
 TOTAL BUILDING SF - 1069 SQ. METERS (11507 SF)
 ZONING ASSUMPTIONS:
- 4.5M FRONT YARD SETBACK
 - 3.5M SIDE YARD SETBACK - EAST PL
 - 3M SIDE YARD SETBACK - WEST FIRST FLOOR, STEPS TO 4.5M ABOVE FIRST FLOOR
 - 7.45M REAR YARD SETBACK
 - SURFACE PARKING IN SETBACK AT REAR, FENCED & SCREENED
 - SUBSTANTIAL SIDE YARD LANDSCAPE BUFFER TO ADJACENT PROPERTY
 - BUILDING STEPS IN AT SIDES AND REAR
 - 12.6M BUILDING HEIGHT (EXCLUDING ELEVATOR SHAFT)
 - BUILDING COVERAGE - 32% OF SITE
 - PROPOSED F.A.R. - 1069 / 1117.8 = .956
 - 4 SURFACE PARKING SPACES
 - 12 UNDERGROUND PARKING SPACES INCLUDING 1 HANDICAP SPACE

Site Plan
 scale: 1/8"

4.5M SETBACK ABOVE FIRST FLOOR
 RAMP ON-GRADE @ ALLEY, SLOPE 6% FIRST 4.5M
 PAVE EXISTING ALLEY W/IN PROPERTY LINES

SCREENED TRASH/RECYCLING COLLECTION
 41.45M (136'-0")
 First floor unit front entrances/porches along street fronts.



SOUTH ELEVATIONS
Scale: 1/8" = 1'

EAST ELEVATIONS
Scale: 1/8" = 1'



WEST ELEVATION
Scale: 1/8" = 1'



NORTH ELEVATION
Scale: 1/8" = 1'



PAPER BIRCH TREE



WHITE SPRUCE TREE



CREeping THYME



MARIGOLDS



BEE BALM



GOLDEN CURRANTS



PIN CHERRY TREE



HARDY KIW VINE



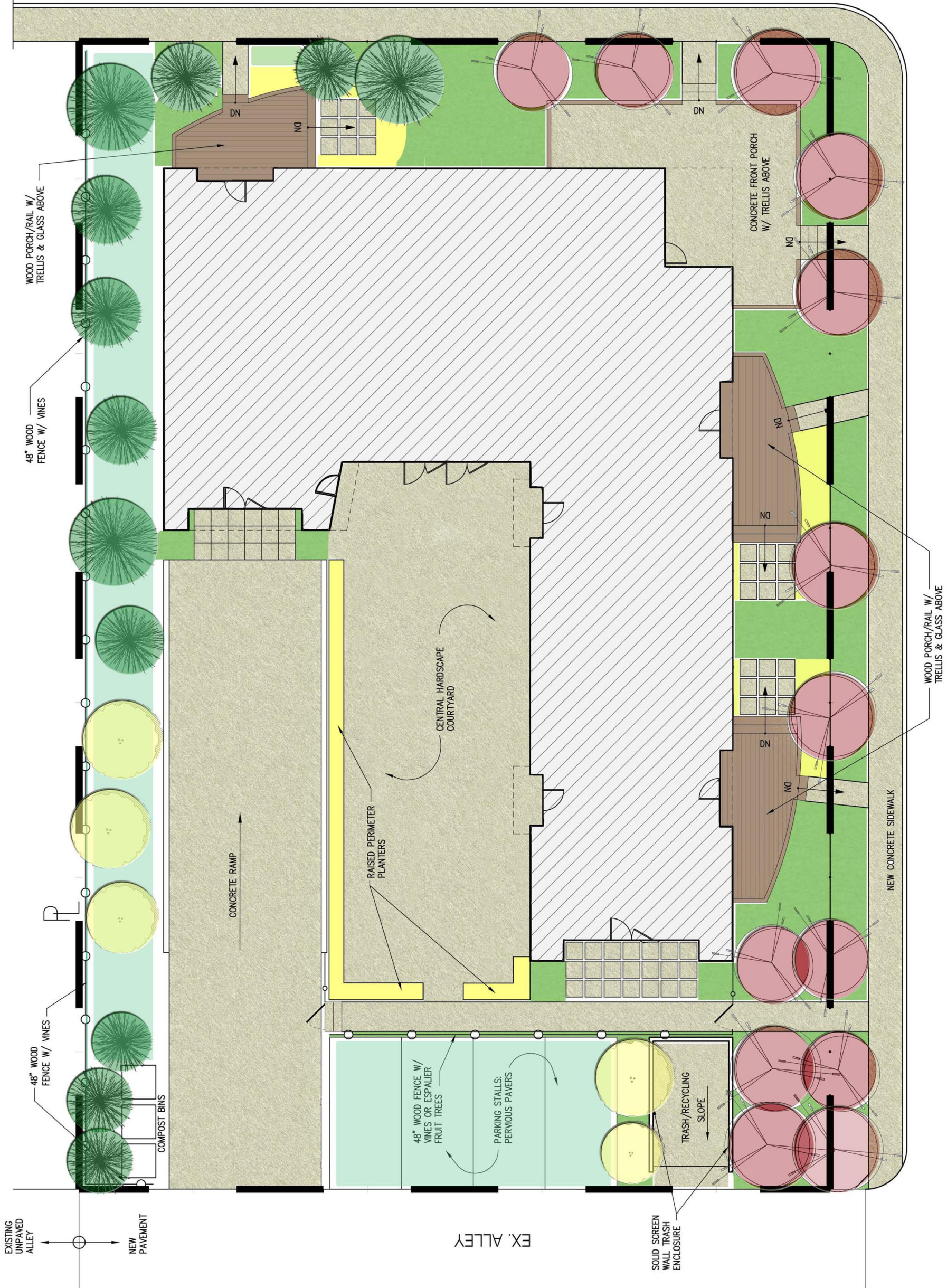
ST. CROIX GRAPE VINE



HONEYCRISP APPLE TREE



ARTIC RASPBERRIES



- GROUND COVER:**
 - LAWN (MINIMAL)
 - STRAWBERRIES
 - MINT
 - LEMON BALM
 - CREeping THYME
 - CHAMOMILE
- COMPANION PLANTED VEG/PERENNIAL BEDS:**
 - MARIGOLD
 - SPINACH
 - BEE BALM
 - BROCCOLI
 - POLE BEANS
 - CABBAGE

FOR EXAMPLE
- FRUIT BEARING SHRUBS:**
 - SASKATOONS
 - WILD BERRIES
 - CRANBERRIES
 - GOOSEBERRIES
 - GOLDEN CURRANTS
 - BLACK CURRANTS
 - ARTIC RASPBERRY
- VINES:**
 - HARDY KIW
 - ST. CROIX GRAPE
- EVERGREEN TREES:**
 - WHITE SPRUCE
 - BALSAM PINE
- DECIDUOUS TREES:**
 - SUNNYBROOK APPLE
 - HONEYCRISP APPLE
 - ROPERO PEAR
 - EARLY GOLD PEAR
 - MOUNTAIN ASH 'SHPOVA'
 - PIN CHERRY
 - MONTMORENCY CHERRY
- PAPER BIRCH**

Landscape Plan
scale: 1/8"