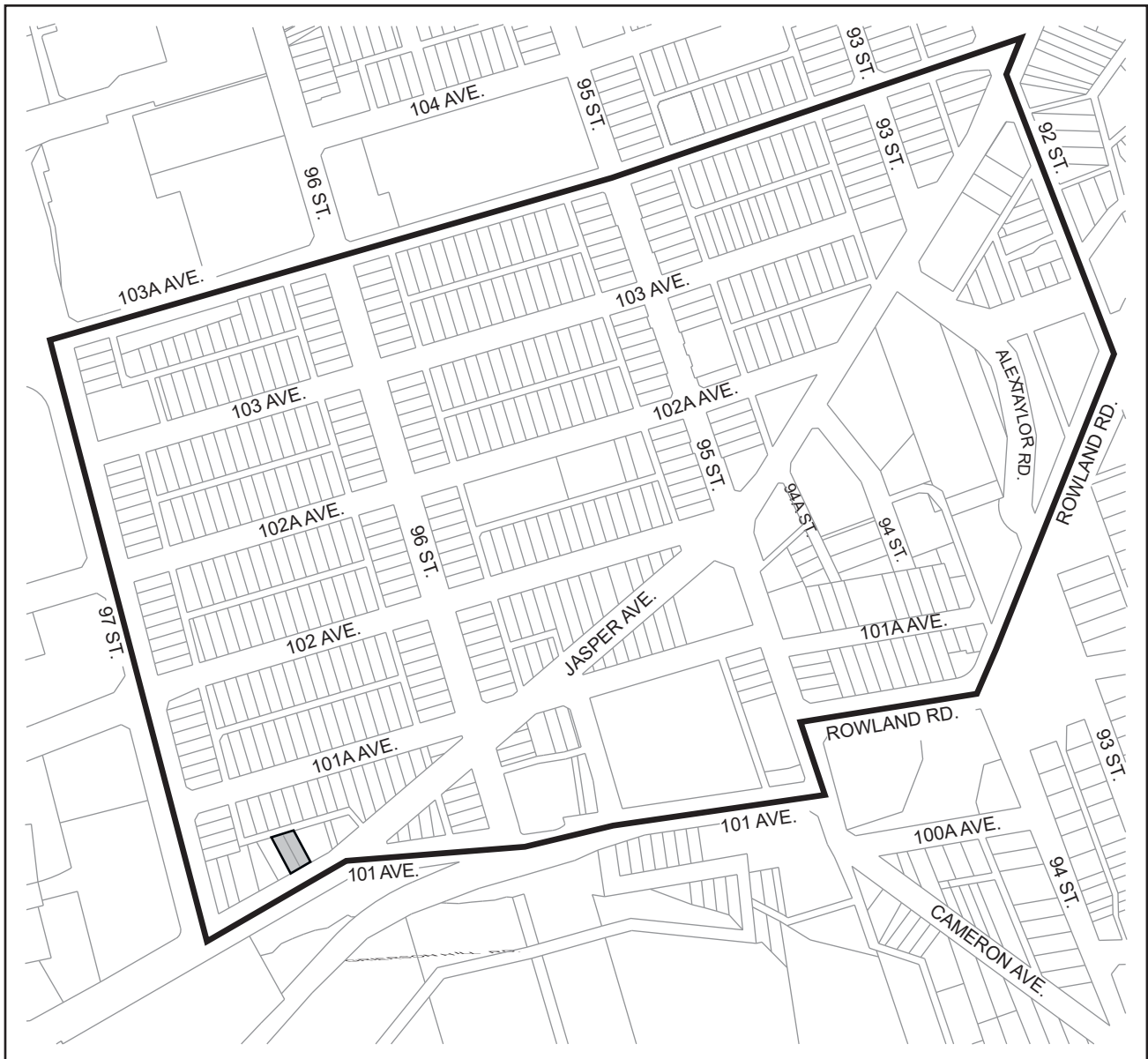
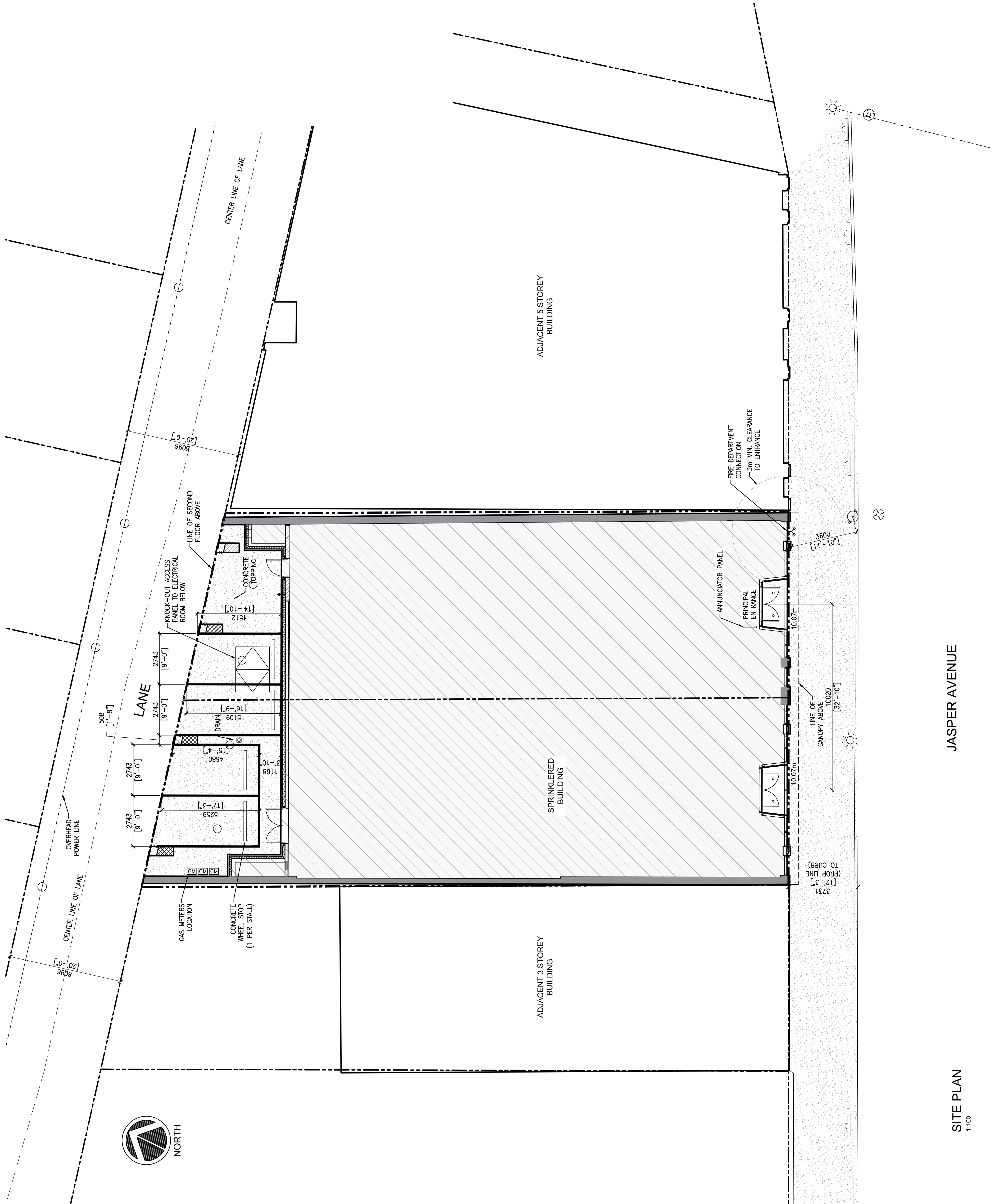




Brighton Block 



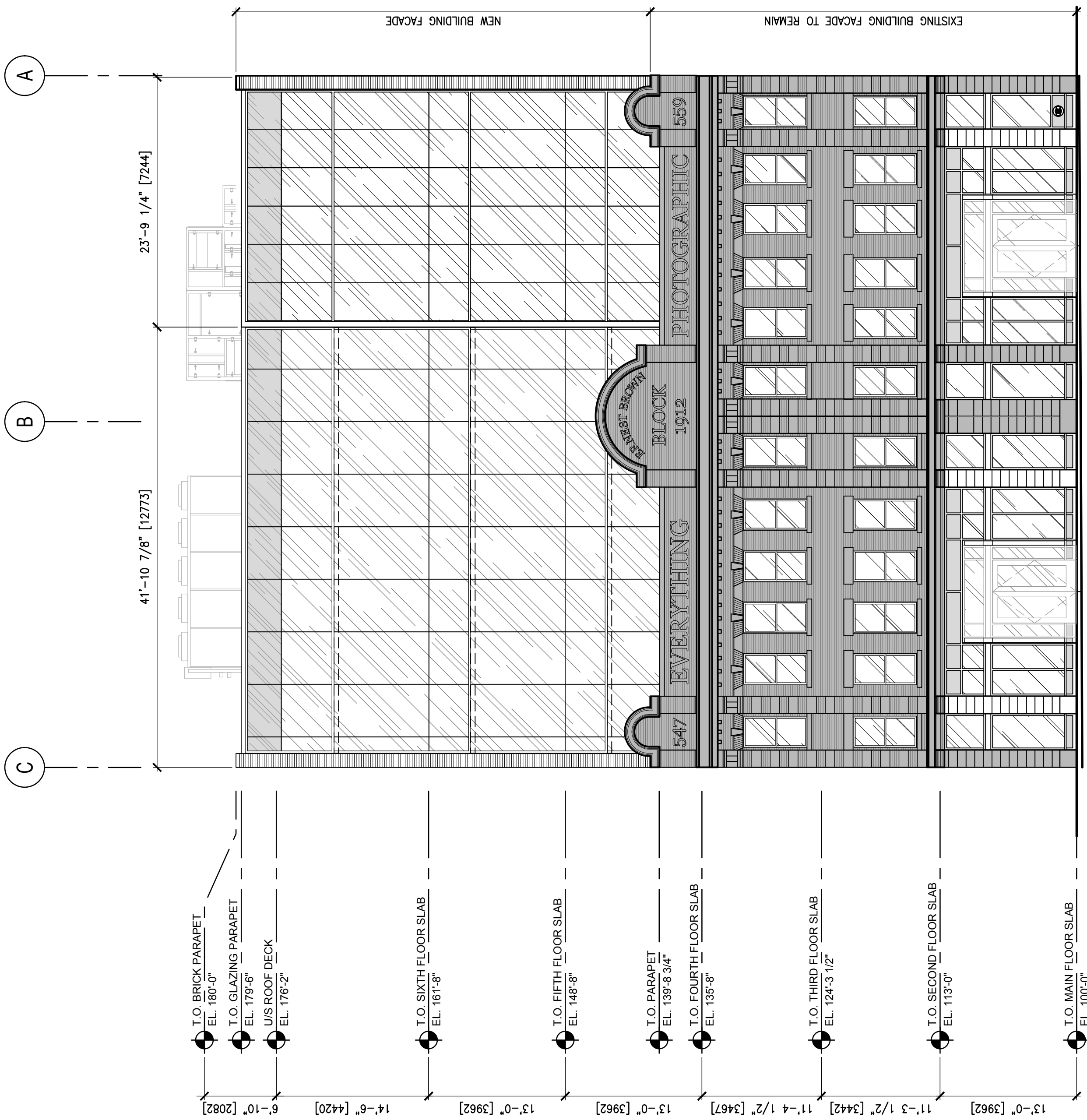


JASPER AVENUE

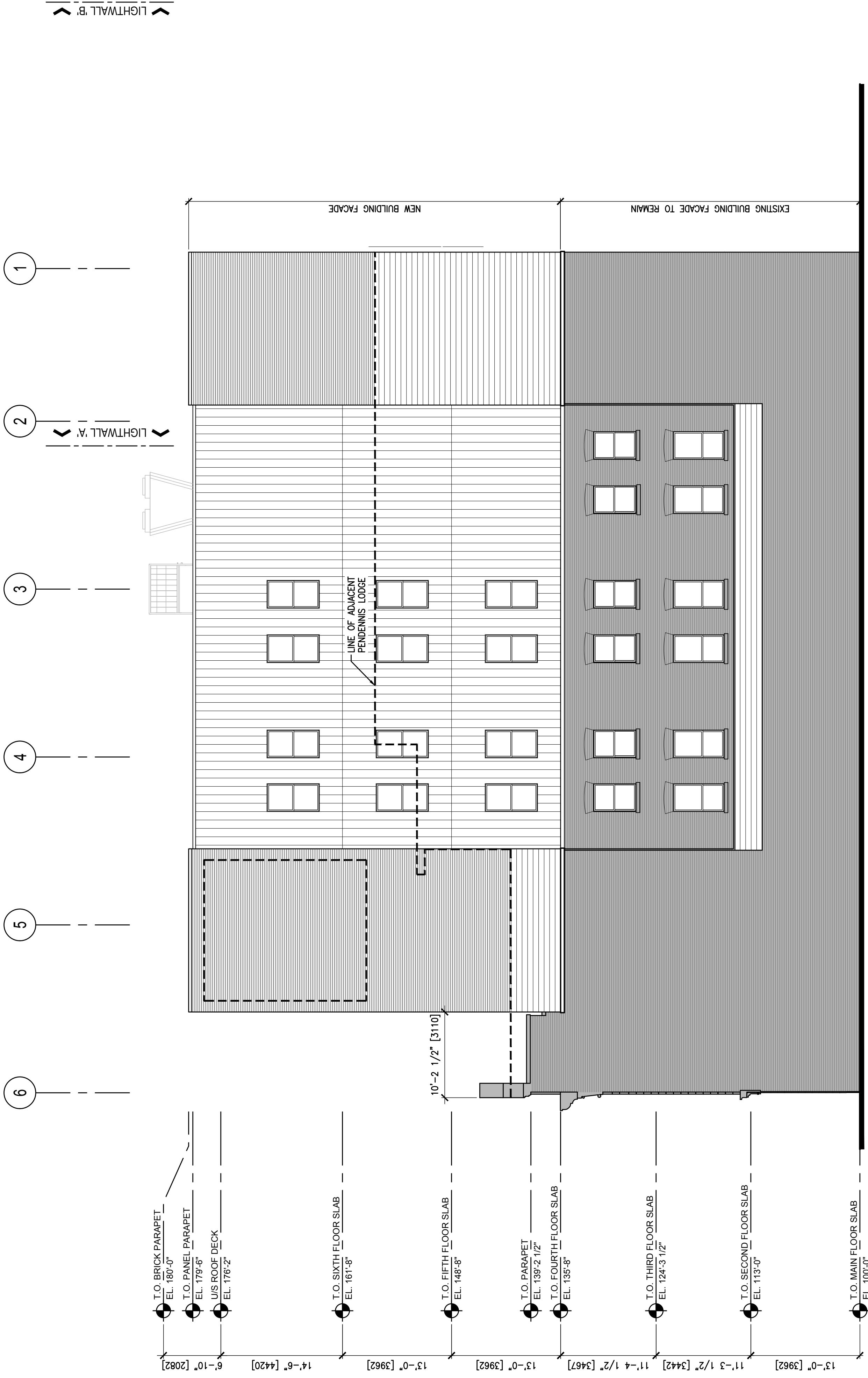
SITE PLAN  
1:100



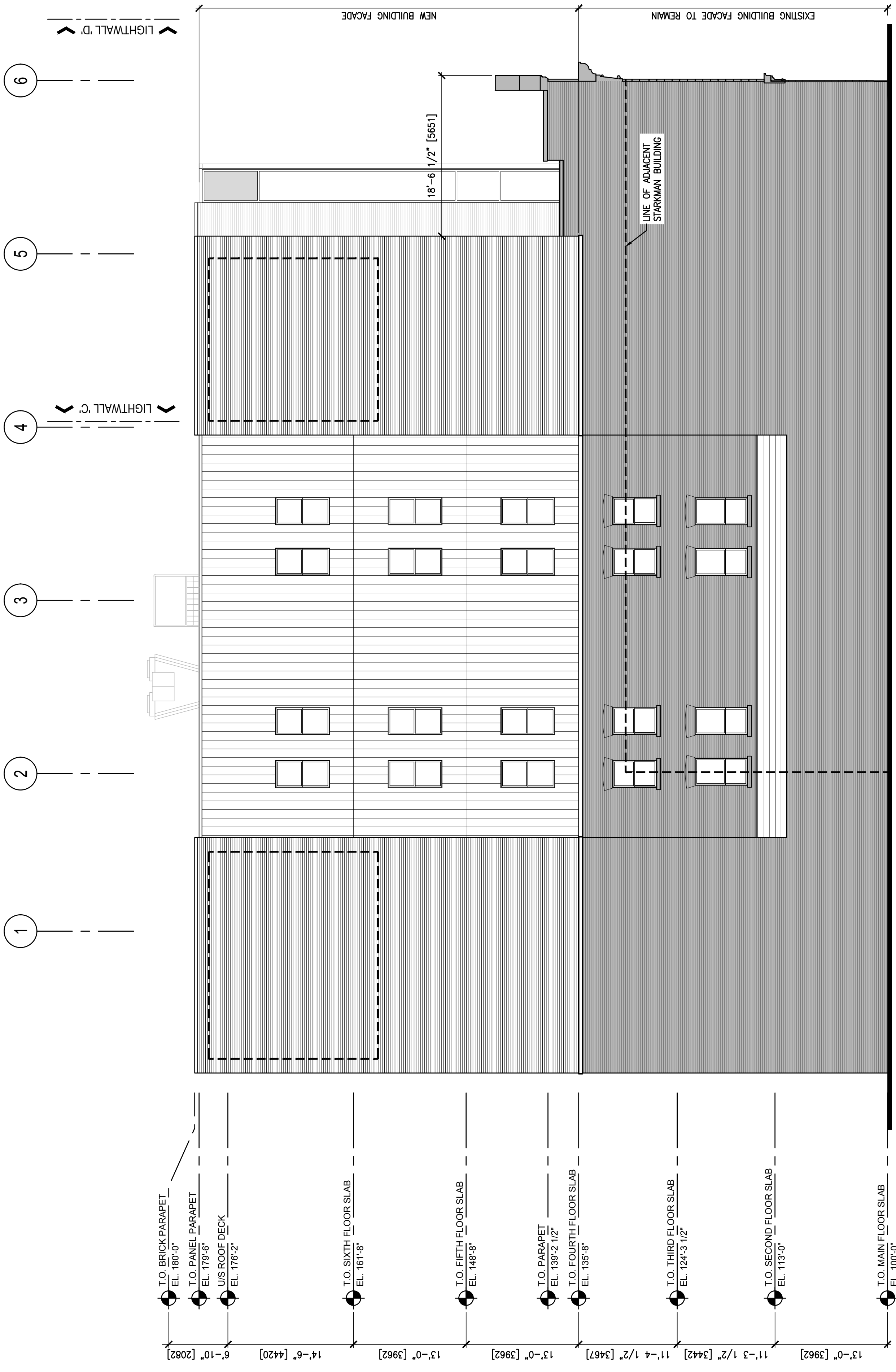
NORTH ELEVATION  
1/8"=1'-0"



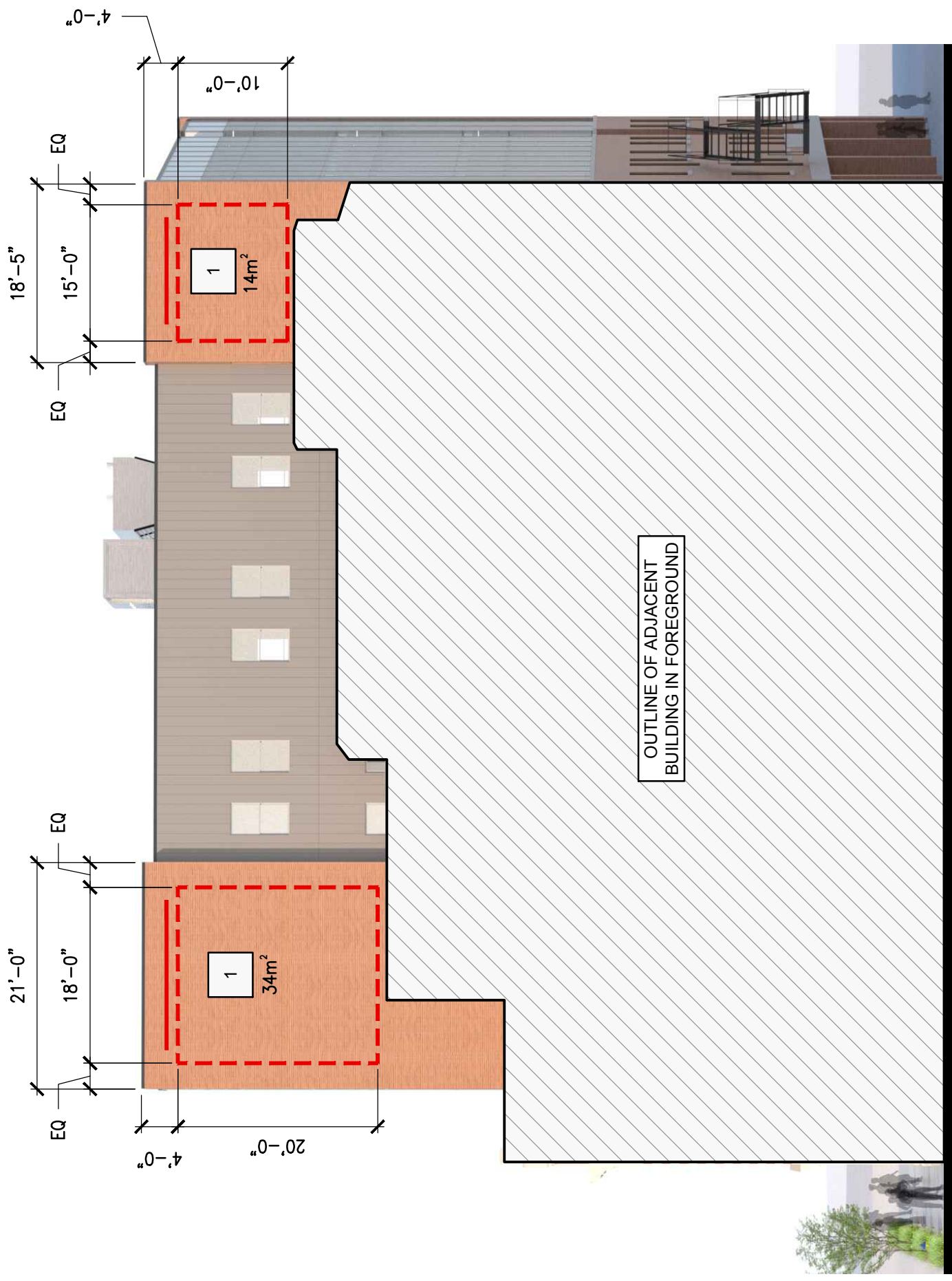
SOUTH ELEVATION  
1/8"=1'-0"



EAST ELEVATION  
1/8"=1'-0"



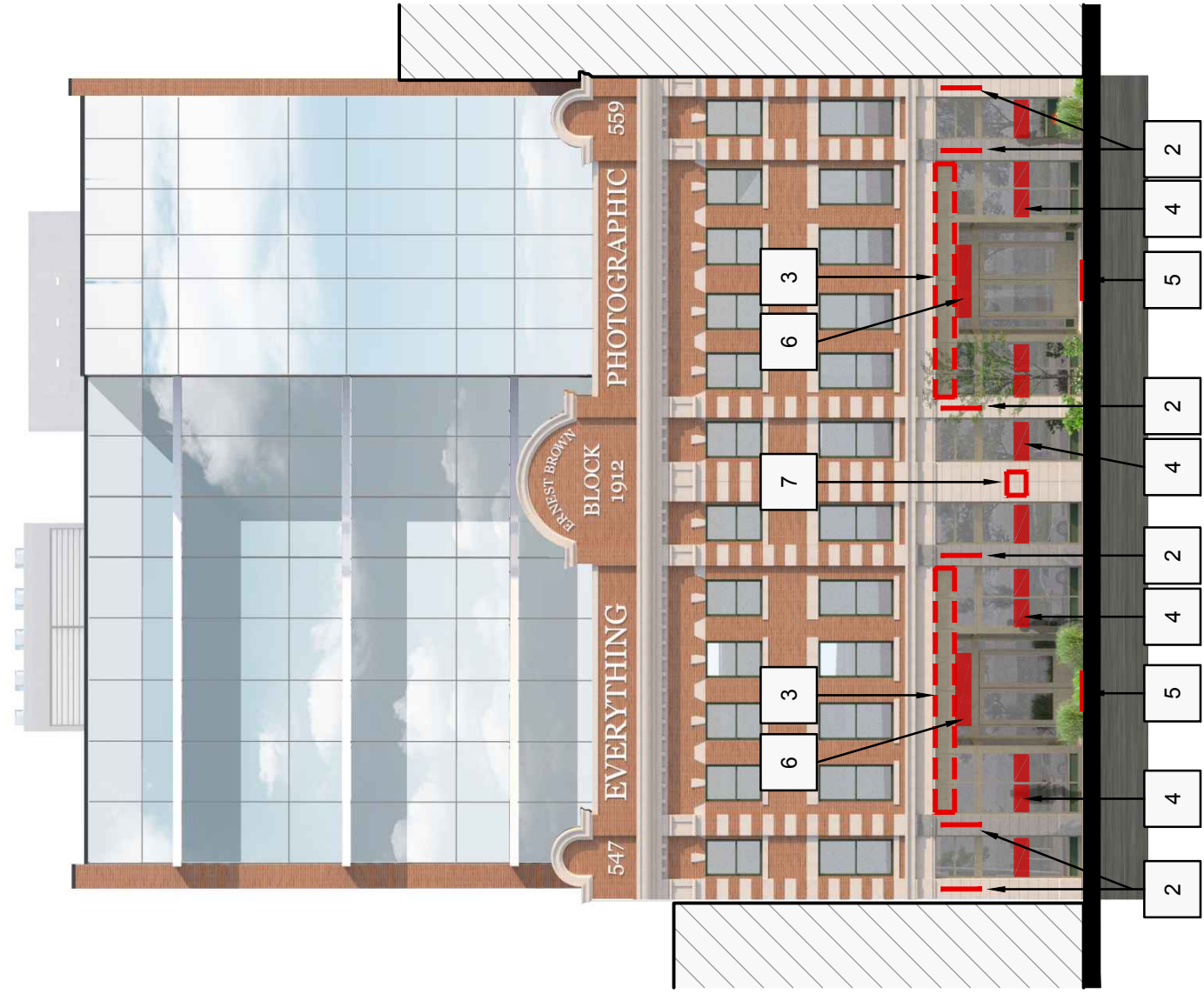
WEST ELEVATION  
1/8"=1'-0"



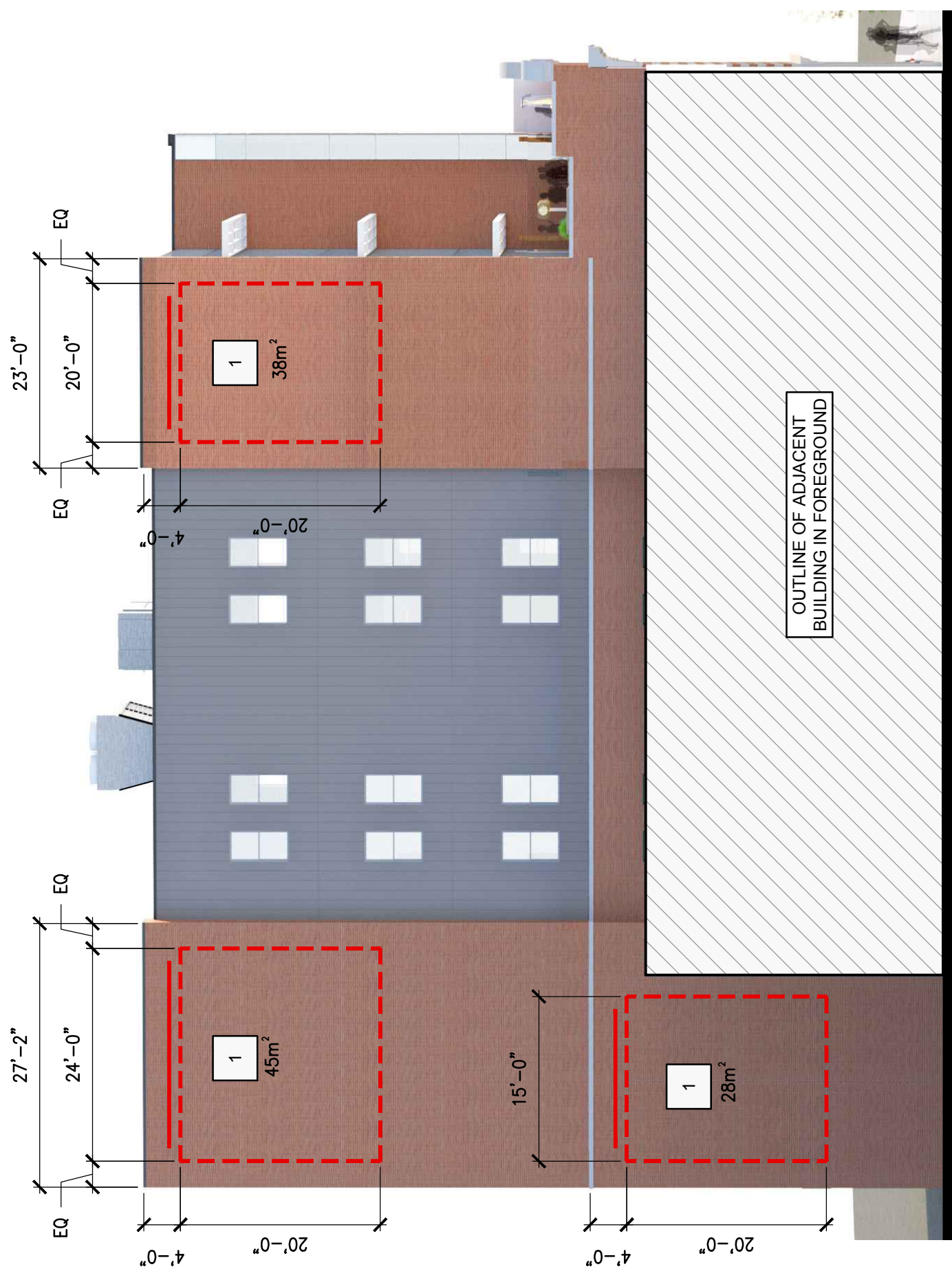
**EAST ELEVATION**

**SIGNAGE TYPES**

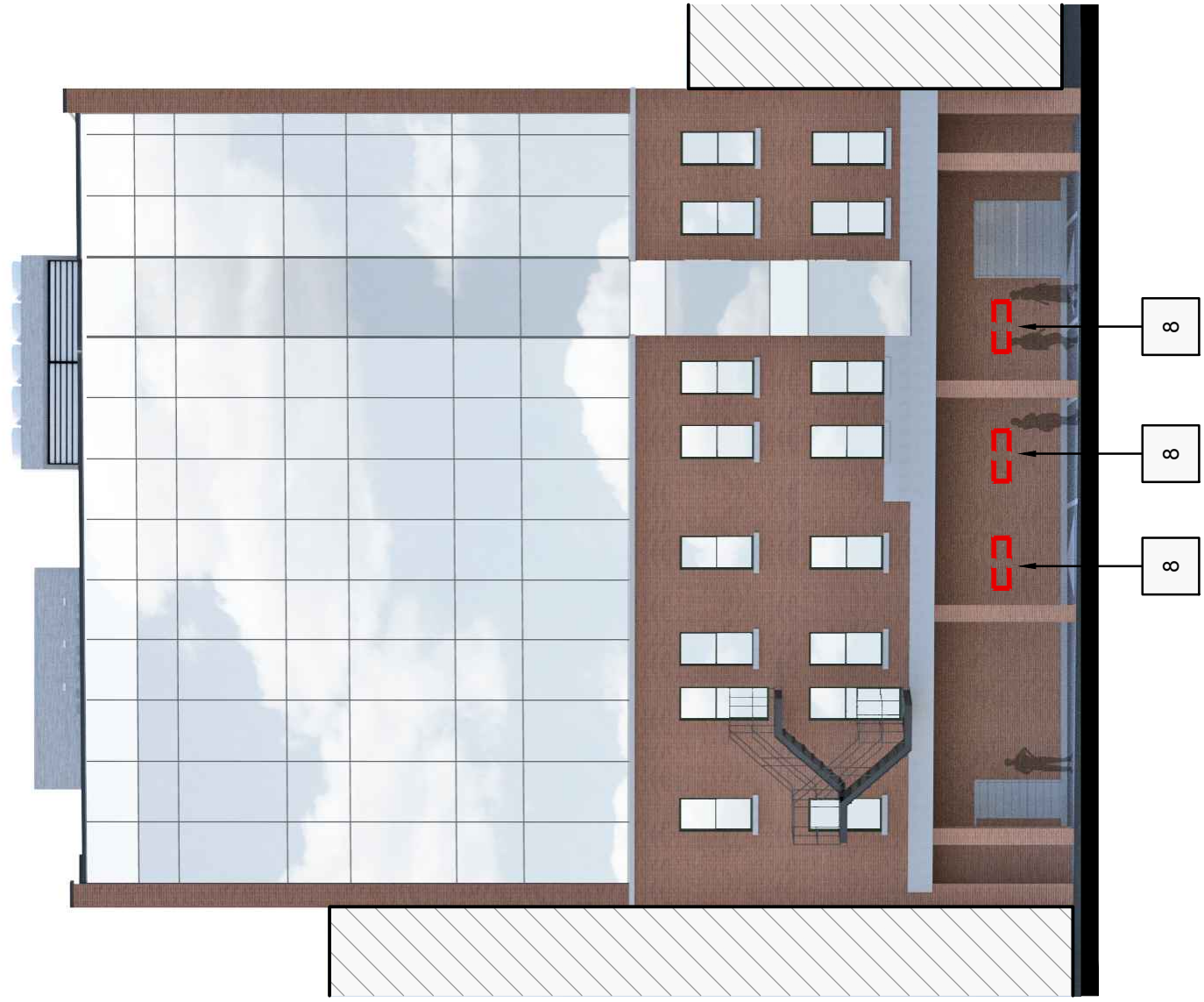
1	GHOST SIGNAGE c/w LED STRIP LIGHTING ABOVE	5	TILE ADDRESS SET INTO ENTRANCE FLOORING
2	PROJECTING SIGNAGE	6	TRANSOM WINDOW SIGNAGE
3	RETRACTABLE FABRIC AWNING	7	HERITAGE PLAQUE
4	STOREFRONT WINDOW SIGNAGE APPLIED TO INTERIOR OF GLAZING	8	GHOST OR PLAQUE STYLE TENANT PARKING SIGNAGE



**SOUTH ELEVATION**



WEST ELEVATION

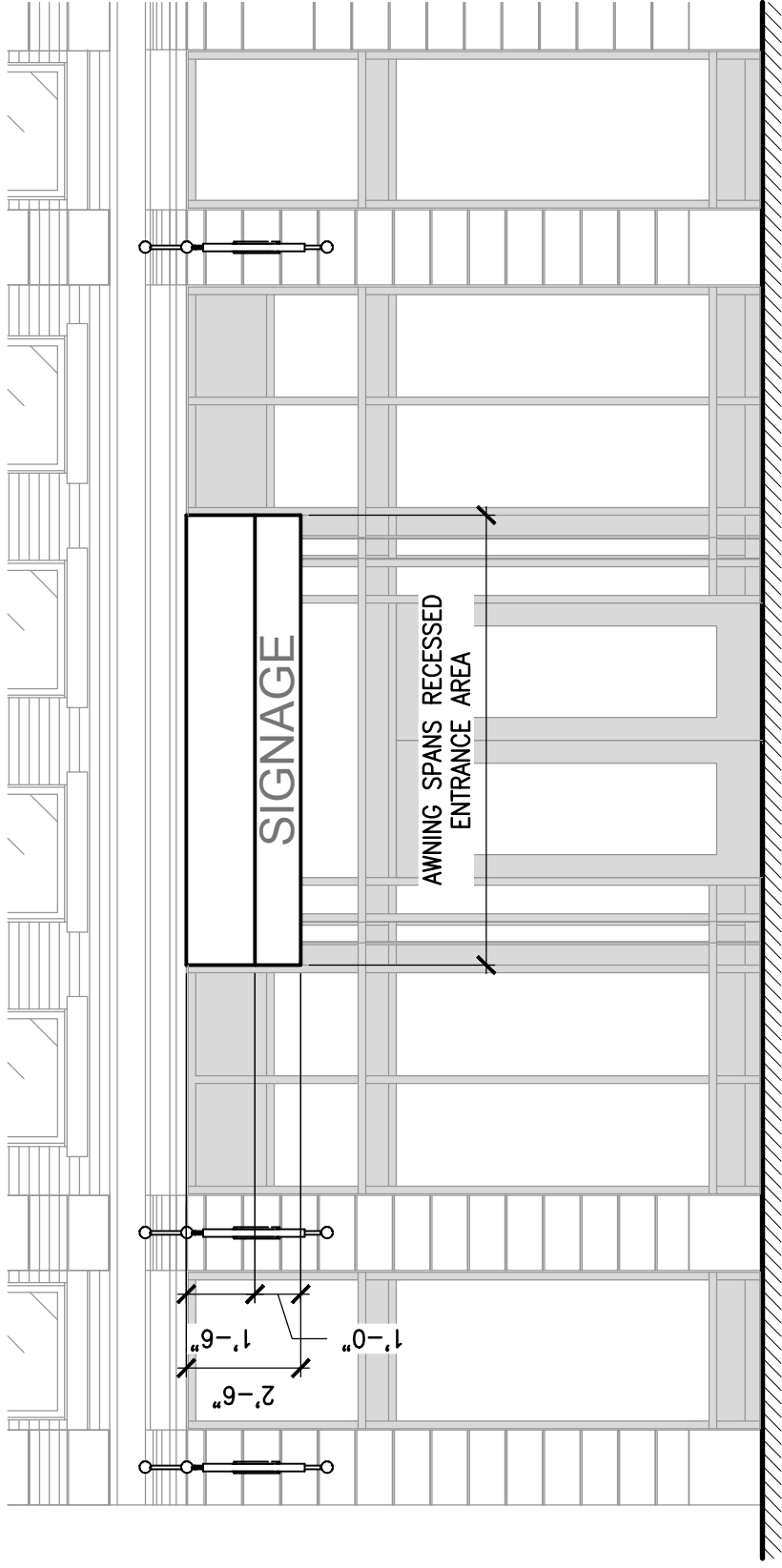


NORTH ELEVATION

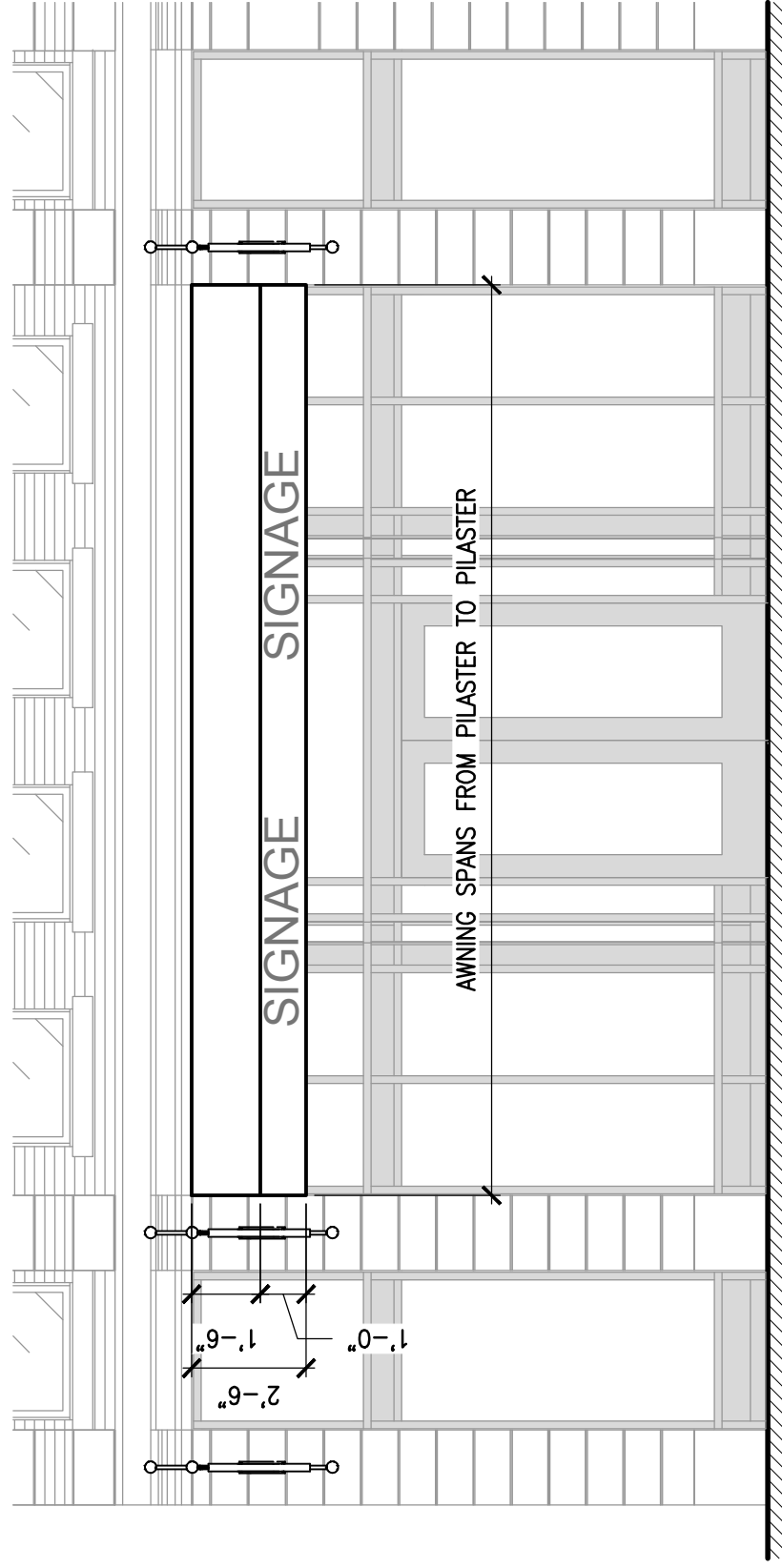
**SIGNAGE TYPES**

- |   |   |   |   |
|---|---|---|---|
| 1 | GHOST SIGNAGE<br>c/w LED STRIP LIGHTING ABOVE               | 5 | TILE ADDRESS SET INTO<br>ENTRANCE FLOORING      |
| 2 | PROJECTING SIGNAGE  | 6 | TRANSOM WINDOW SIGNAGE                          |
| 3 | RETRACTABLE FABRIC AWNING                                   | 7 | HERITAGE PLAQUE                                 |
| 4 | STOREFRONT WINDOW SIGNAGE<br>APPLIED TO INTERIOR OF GLAZING | 8 | GHOST OR PLAQUE STYLE<br>TENANT PARKING SIGNAGE |

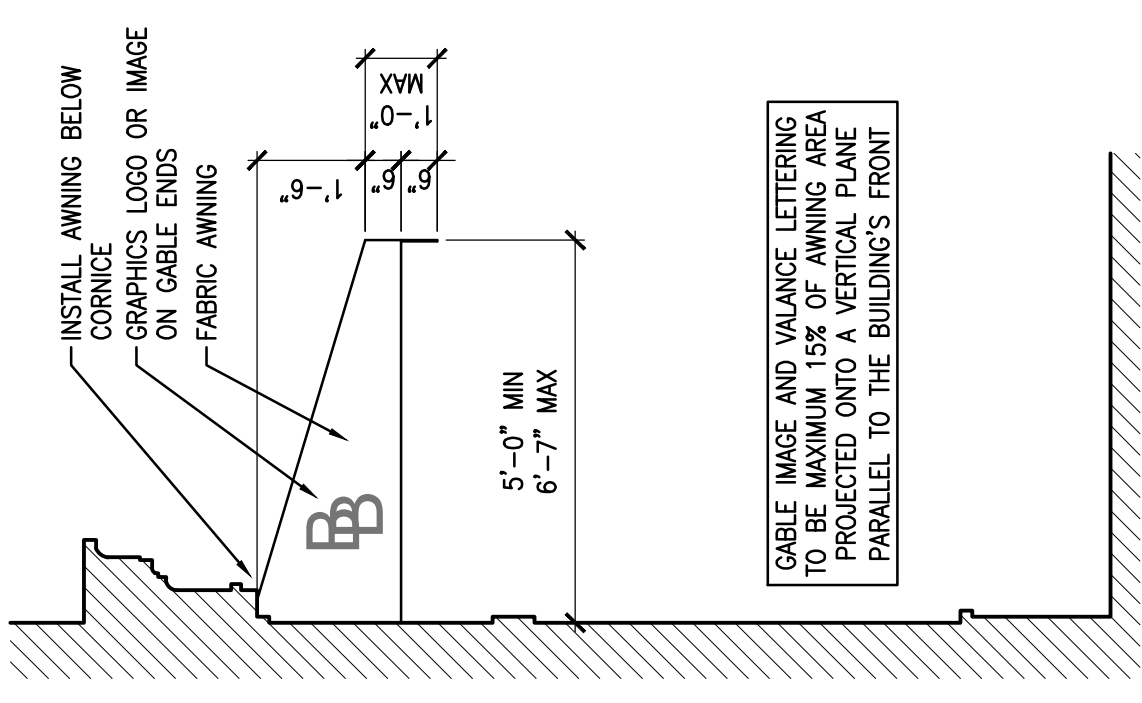
# RETRACTABLE AWNINGS



ELEVATION - OPTION 1



ELEVATION - OPTION 2

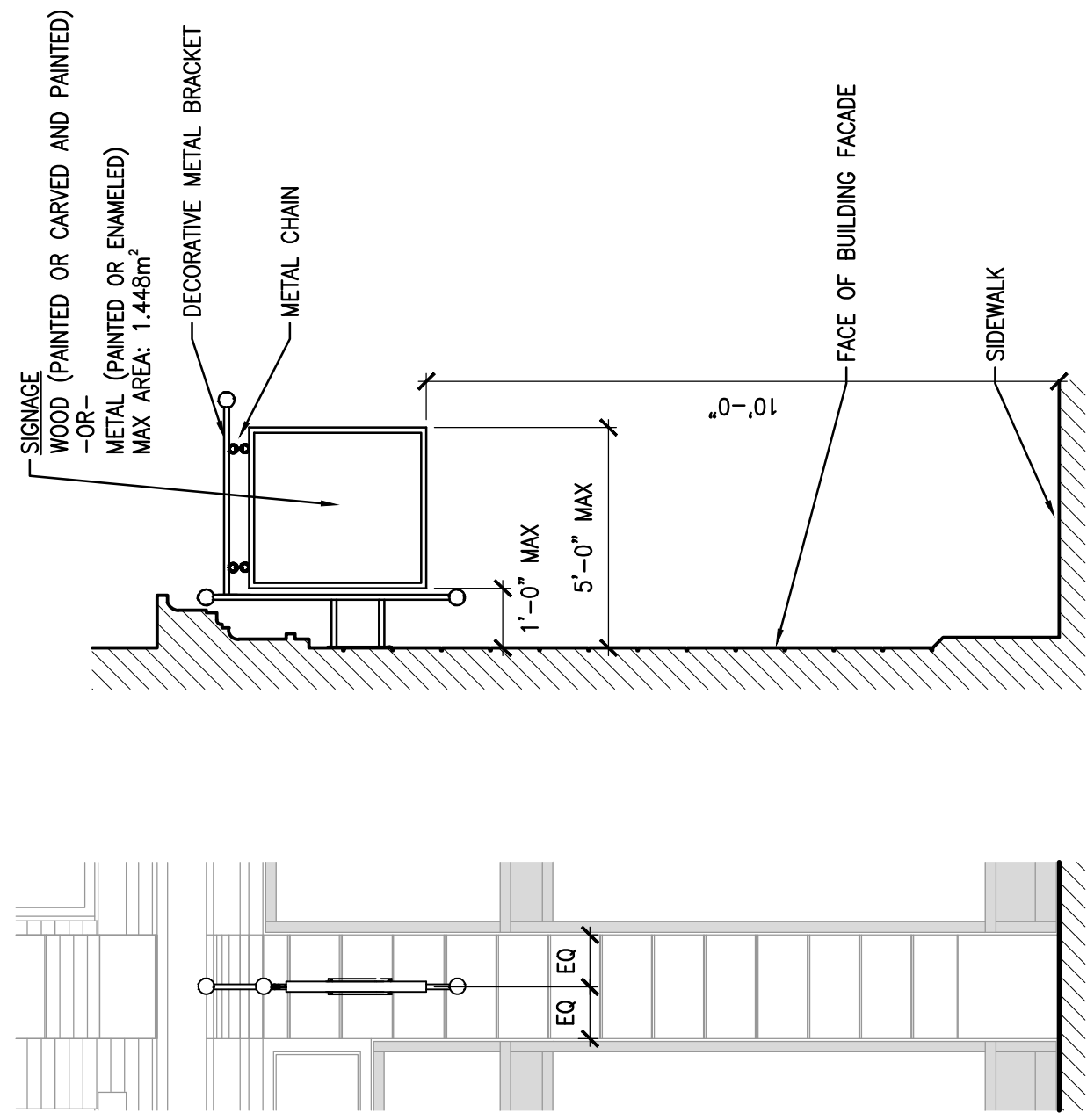


GABLE IMAGE AND VALANCE LETTERING TO BE MAXIMUM 15% OF AWNING AREA PROJECTED ONTO A VERTICAL PLANE PARALLEL TO THE BUILDING'S FRONT

## RETRACTABLE AWNING SIDE ELEVATION



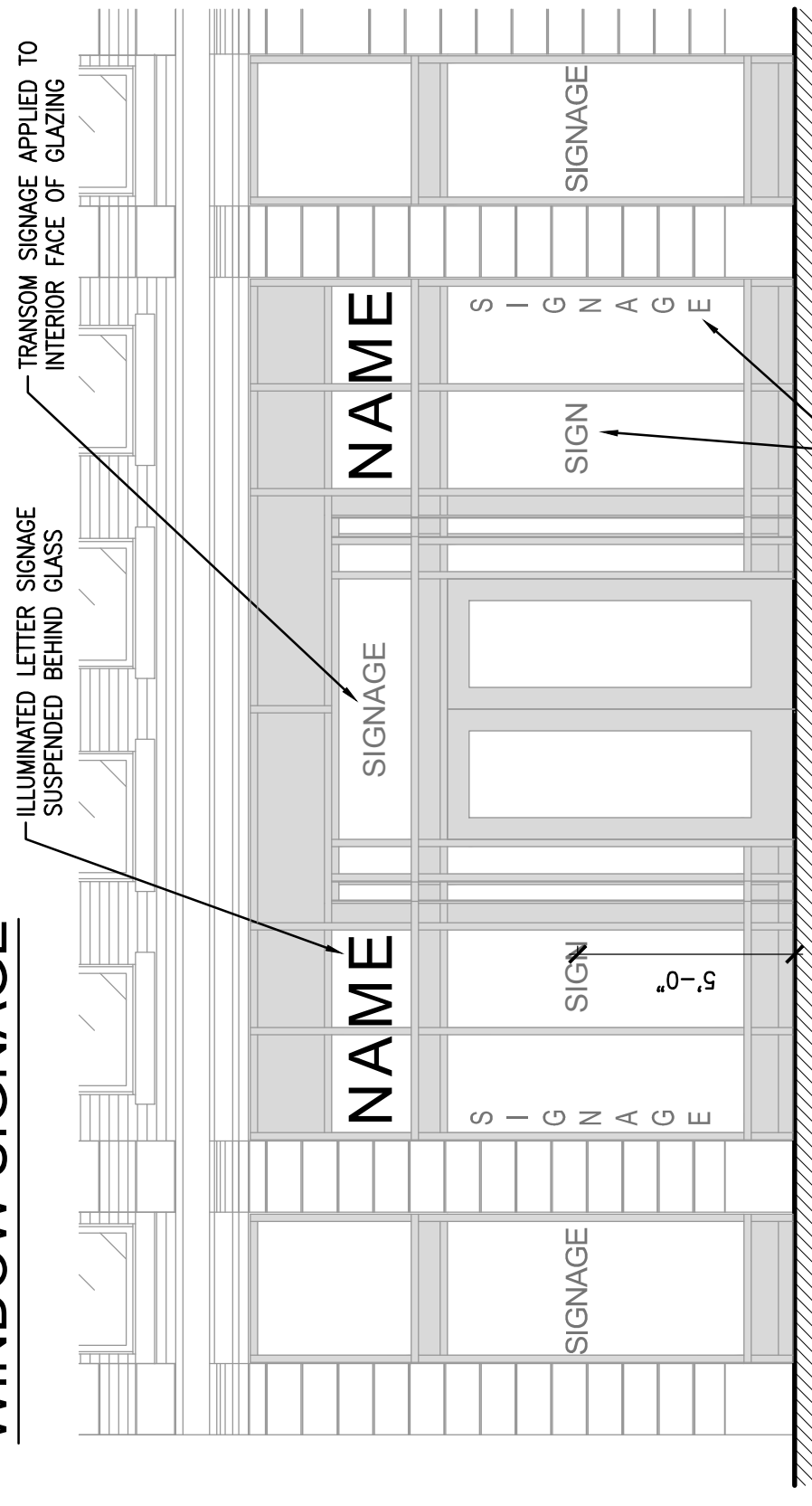
# PROJECTING SIGNAGE



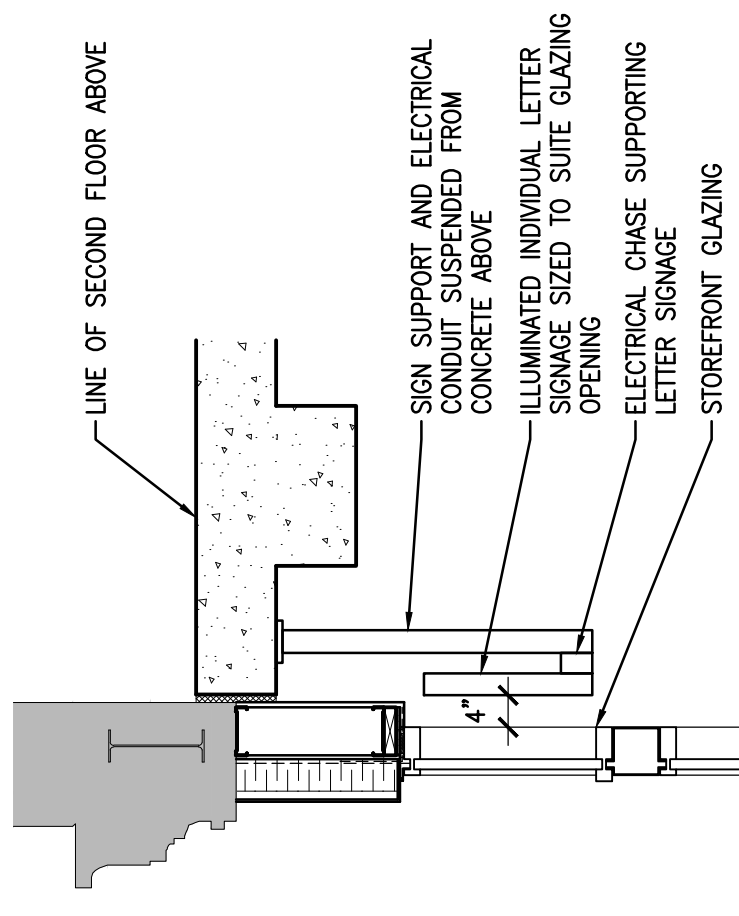
ELEVATION

SIDE ELEVATION

# WINDOW SIGNAGE



SIGNAGE APPLIED TO INTERIOR FACE OF GLAZING  
VERTICALLY OR HORIZONTALLY. SIGNAGE TO FIT WITHIN A  
RECTANGLE OCCUPYING MAX 30% OF TOTAL WINDOW AREA.



WINDOW SIGNAGE TO BE LIMITED TO TENANT  
NAME/TYPE OF BUSINESS ONLY. ILLUMINATED  
SIGNAGE TO BE NON-FLASHING, FLUORESCENT  
OR COLOURED LIGHTING NOT TO BE USED.

LETTER SIGNAGE SECTION