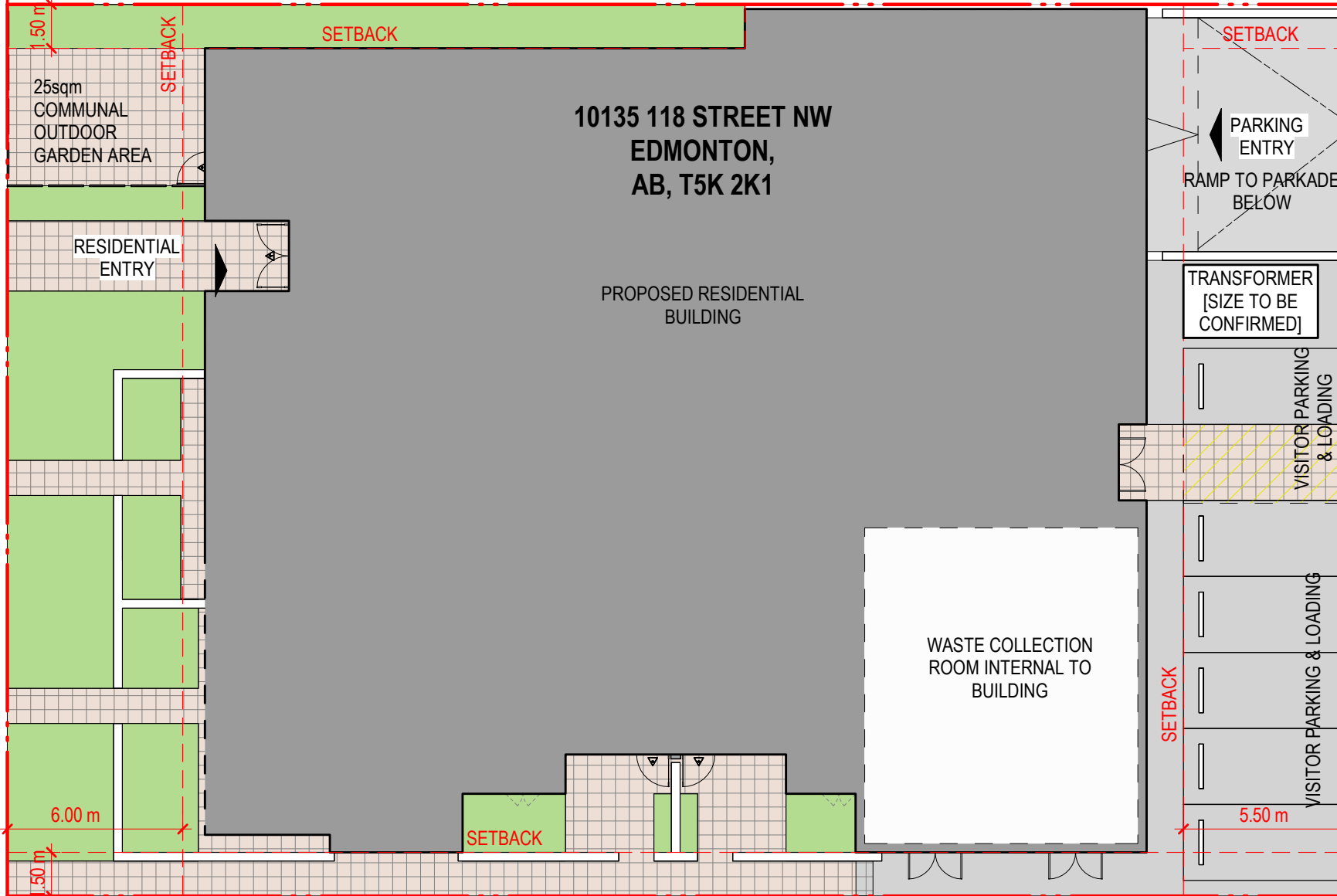


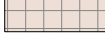




10159 118 STREET NW

PROPERTY LINE



-  BUILDING OUTLINE
-  GARBAGE ROOM
-  HARD LANDSCAPING [PEDESTRIAN USE]
-  HARD LANDSCAPING [VEHICLE USE]
-  SOFT LANDSCAPING

118 STREET

EXISTING BOULEVARD WITH PLANTING

EXISTING SIDEWALK

PROPERTY LINE

PROPERTY LINE

LANE

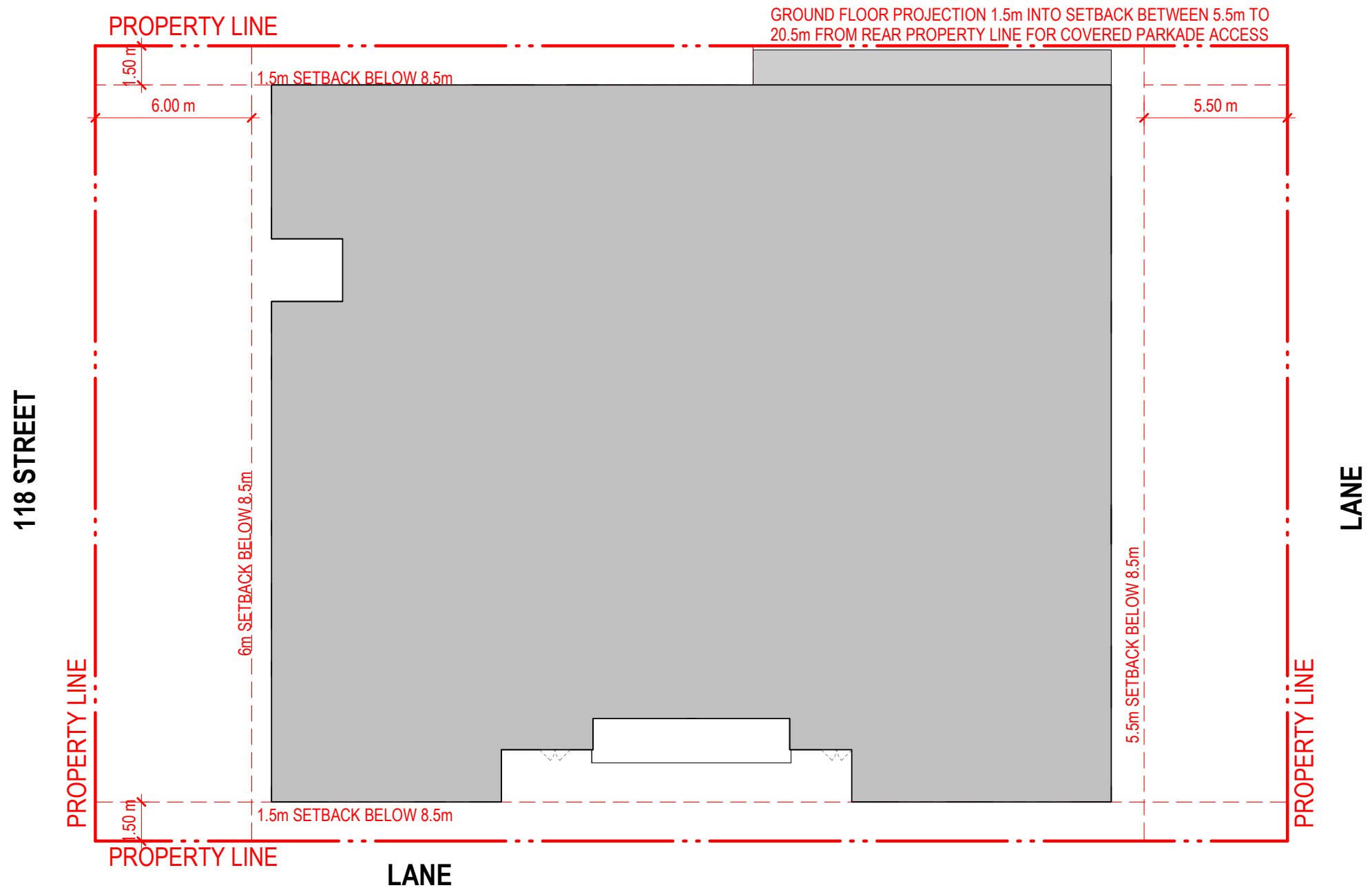
LANE

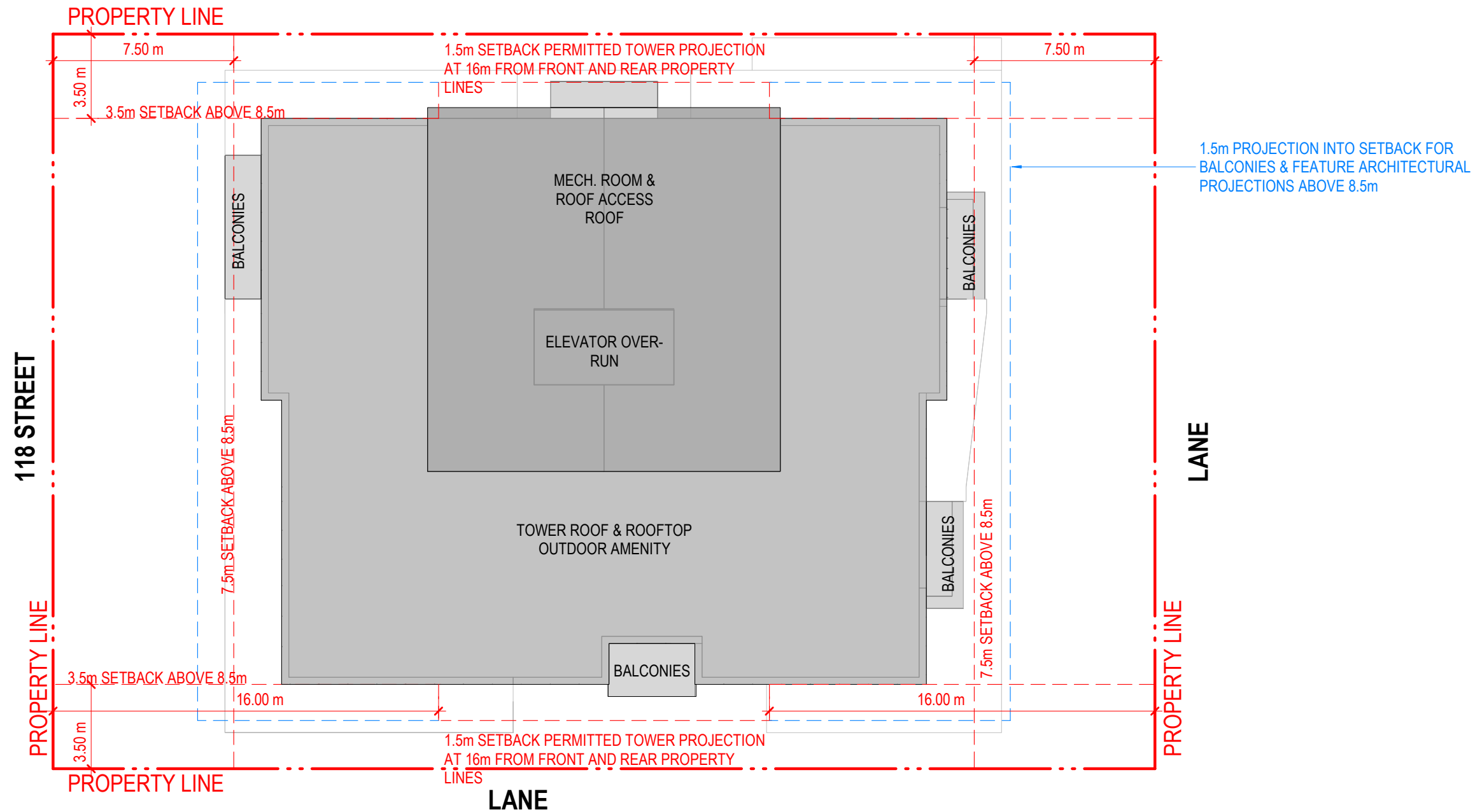
PROPERTY LINE

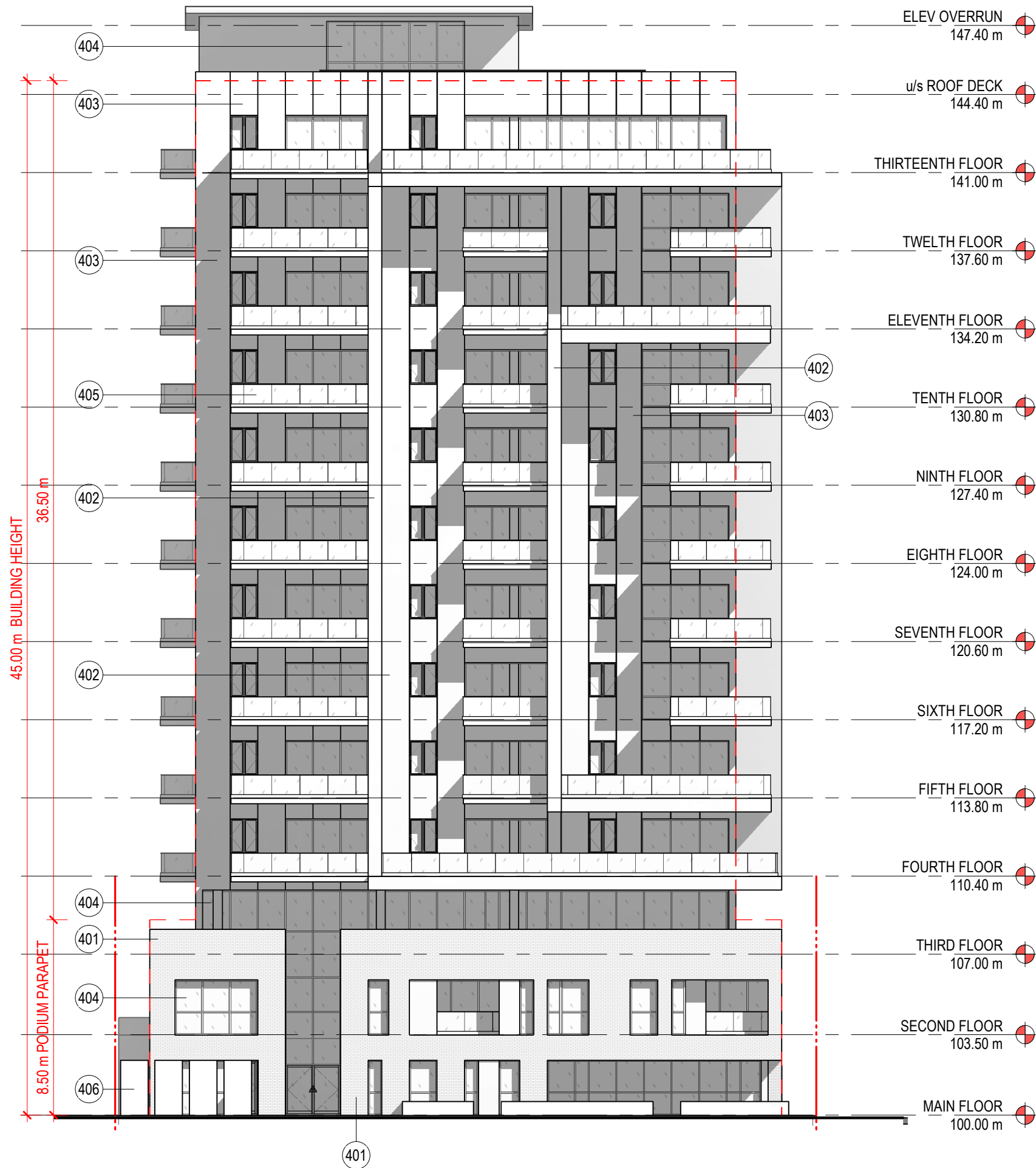
PLANTING/LANDSCAPING SHOWN AS INDICATIVE.  
LANDSCAPING REQUIREMENTS TO COMPLY WITH CITY  
OF EDMONTON ZONING BYLAW 12800 SECTION 55

10130 117 STREET NW



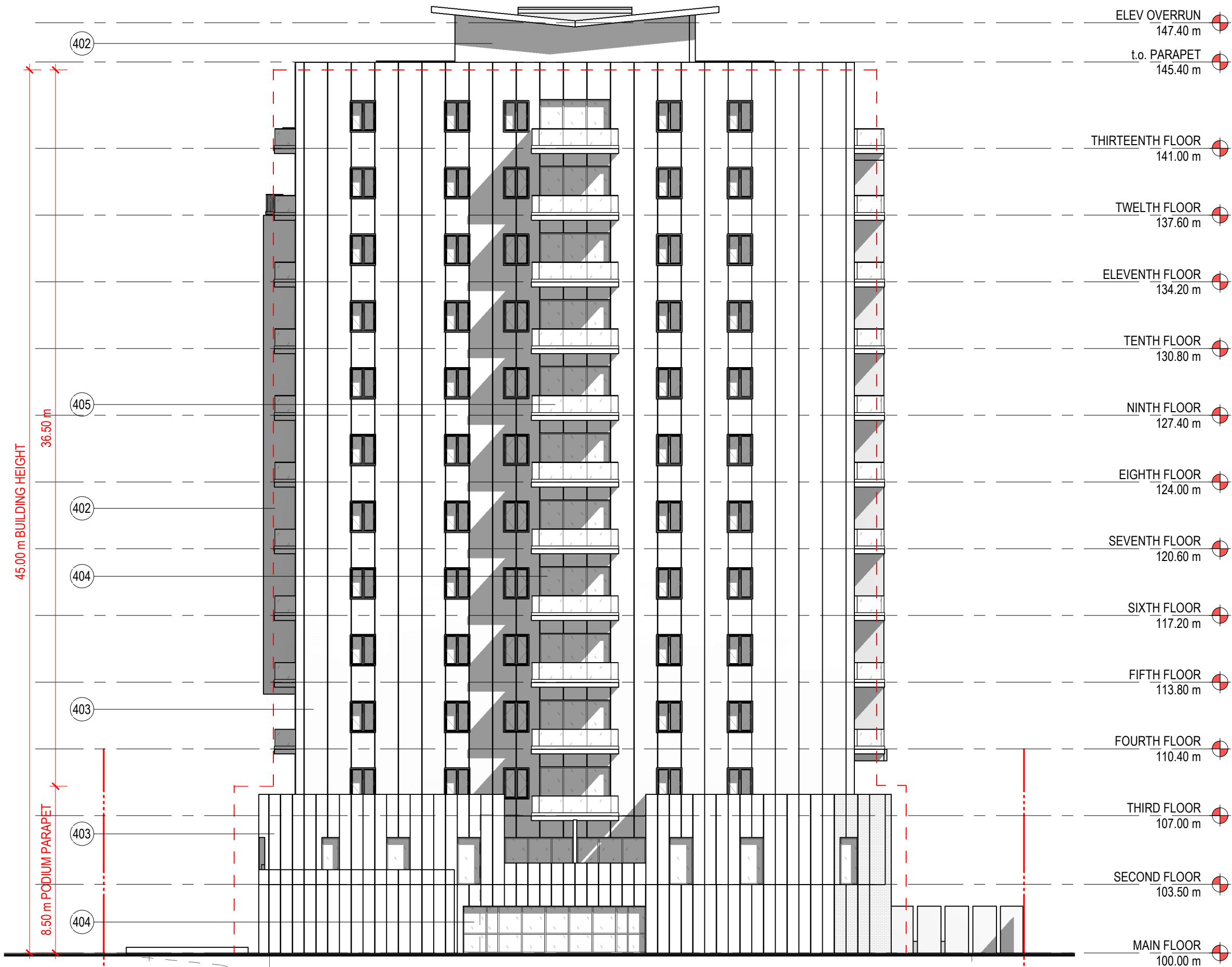






| KEYNOTE LEGEND |                                 |
|----------------|---------------------------------|
| No.            | DESCRIPTION                     |
| 401            | BRICK WITH FEATURE METAL PANELS |
| 402            | METAL CLADDING                  |
| 403            | FIBRE BOARD CLADDING            |
| 404            | GLAZING                         |
| 405            | BALCONY GUARDS                  |
| 406            | LANDSCAPE PANELS                |

APPENDIX IV - WEST ELEVATION



- ELEV OVERRUN 147.40 m
- t.o. PARAPET 145.40 m
- THIRTEENTH FLOOR 141.00 m
- TWELTH FLOOR 137.60 m
- ELEVENTH FLOOR 134.20 m
- TENTH FLOOR 130.80 m
- NINTH FLOOR 127.40 m
- EIGHTH FLOOR 124.00 m
- SEVENTH FLOOR 120.60 m
- SIXTH FLOOR 117.20 m
- FIFTH FLOOR 113.80 m
- FOURTH FLOOR 110.40 m
- THIRD FLOOR 107.00 m
- SECOND FLOOR 103.50 m
- MAIN FLOOR 100.00 m

| KEYNOTE LEGEND |                                 |
|----------------|---------------------------------|
| No.            | DESCRIPTION                     |
| 401            | BRICK WITH FEATURE METAL PANELS |
| 402            | METAL CLADDING                  |
| 403            | FIBRE BOARD CLADDING            |
| 404            | GLAZING                         |
| 405            | BALCONY GUARDS                  |
| 406            | LANDSCAPE PANELS                |

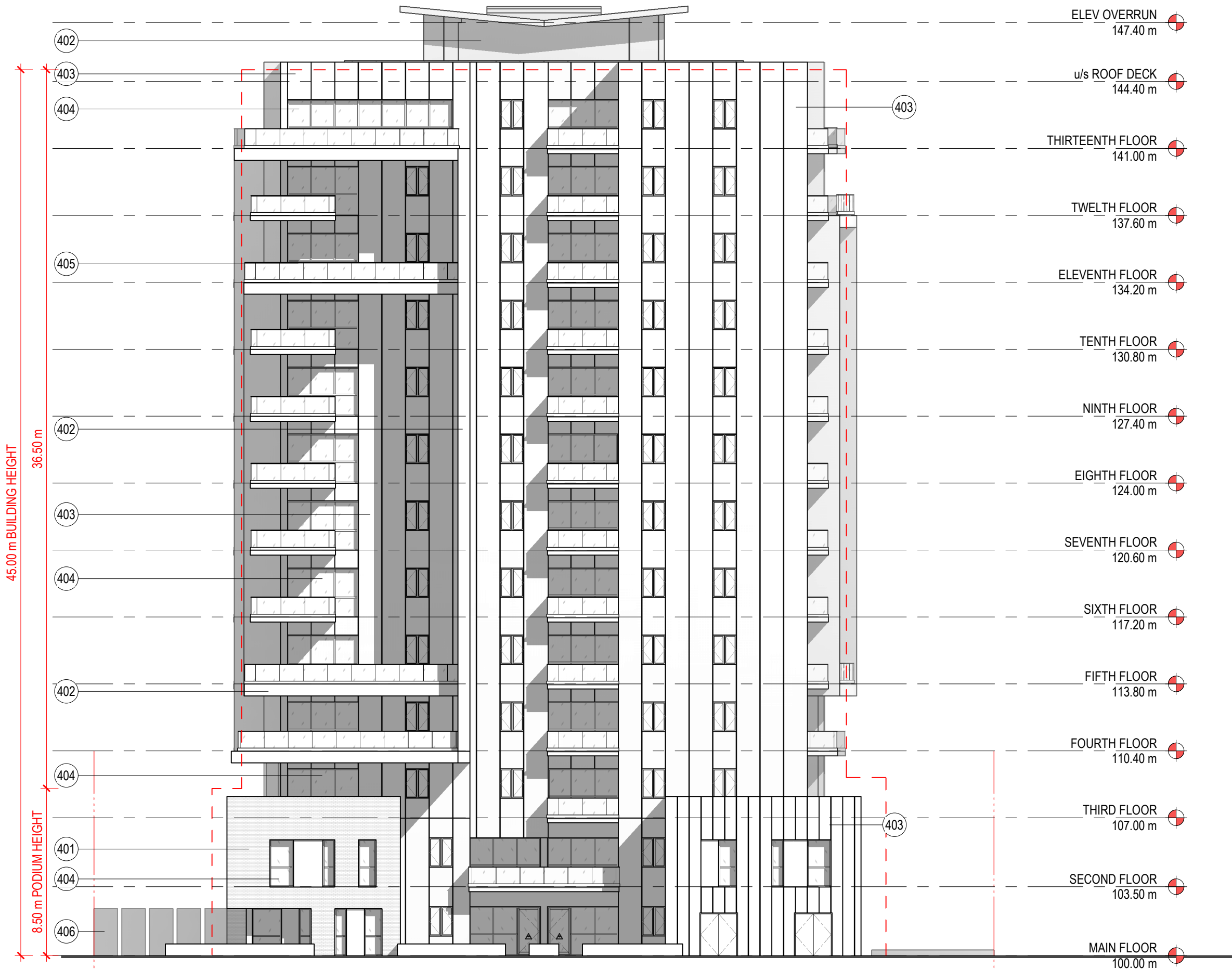
APPENDIX V - NORTH ELEVATION



- ELEV OVERRUN 147.40 m
- u/s ROOF DECK 144.40 m
- THIRTEENTH FLOOR 141.00 m
- TWELTH FLOOR 137.60 m
- ELEVENTH FLOOR 134.20 m
- TENTH FLOOR 130.80 m
- NINTH FLOOR 127.40 m
- EIGHTH FLOOR 124.00 m
- SEVENTH FLOOR 120.60 m
- SIXTH FLOOR 117.20 m
- FIFTH FLOOR 113.80 m
- FOURTH FLOOR 110.40 m
- THIRD FLOOR 107.00 m
- SECOND FLOOR 103.50 m
- MAIN FLOOR 100.00 m

| KEYNOTE LEGEND |                                 |
|----------------|---------------------------------|
| No.            | DESCRIPTION                     |
| 401            | BRICK WITH FEATURE METAL PANELS |
| 402            | METAL CLADDING                  |
| 403            | FIBRE BOARD CLADDING            |
| 404            | GLAZING                         |
| 405            | BALCONY GUARDS                  |
| 406            | LANDSCAPE PANELS                |

APPENDIX VI - EAST ELEVATION



| KEYNOTE LEGEND |                                 |
|----------------|---------------------------------|
| No.            | DESCRIPTION                     |
| 401            | BRICK WITH FEATURE METAL PANELS |
| 402            | METAL CLADDING                  |
| 403            | FIBRE BOARD CLADDING            |
| 404            | GLAZING                         |
| 405            | BALCONY GUARDS                  |
| 406            | LANDSCAPE PANELS                |

APPENDIX VII - SOUTH ELEVATION